



Blue Hours Atelier

No. 0001

Bodice Sloper

FRONT

Size 30
(C Cup)

Cut 2

2



3

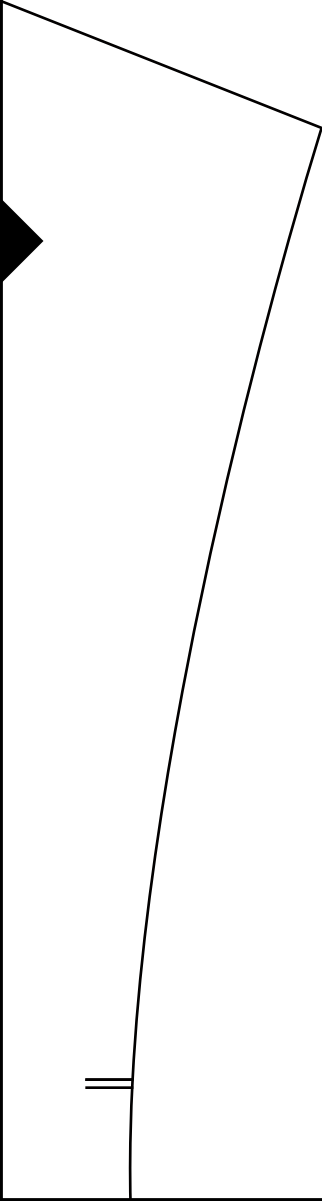
Blue Hours Atelier

No. 0001

Bodice Sloper

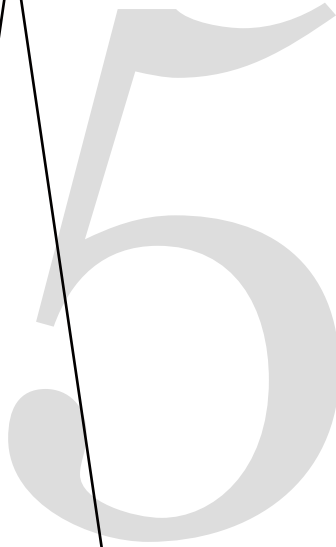
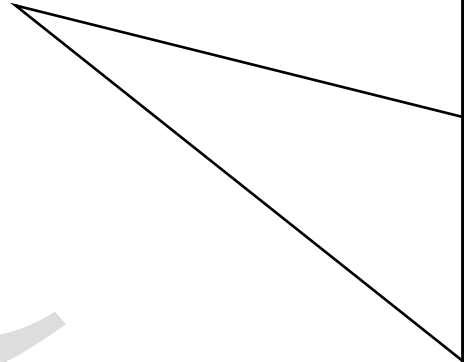
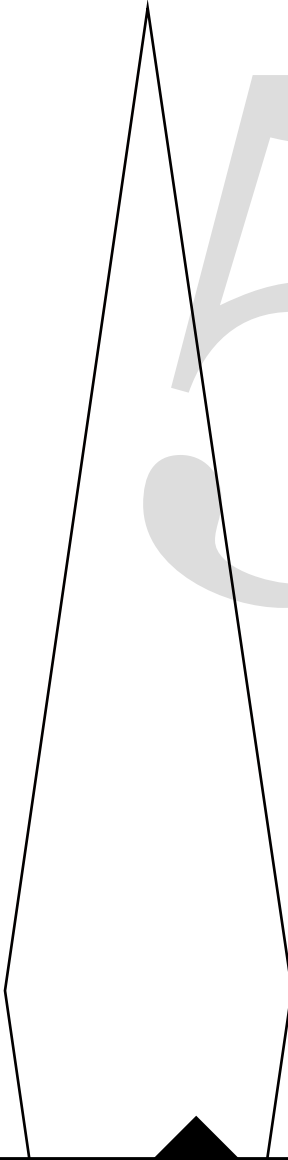
BACK

Size 30



4

(has no seam allowances)

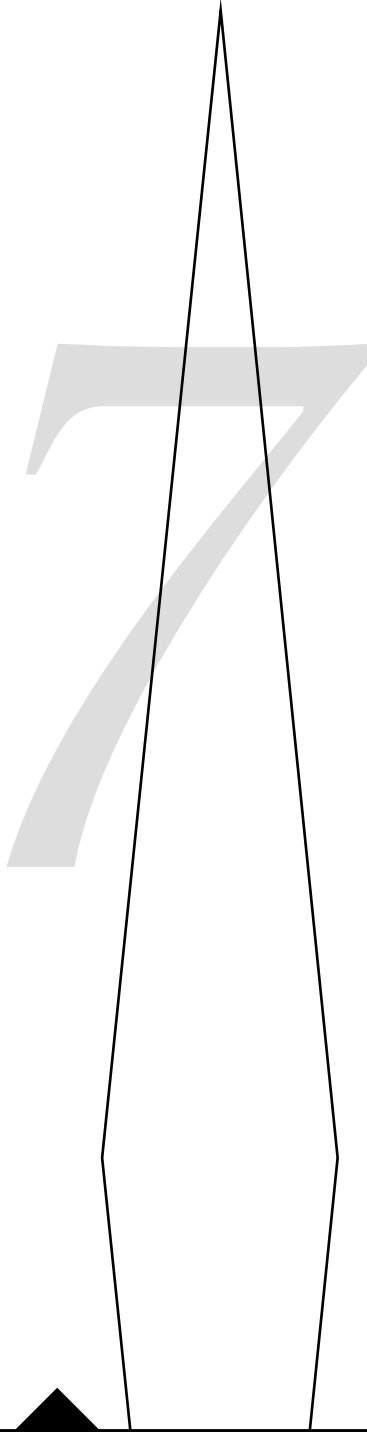




6

Cut 2

(has no seam allowances)



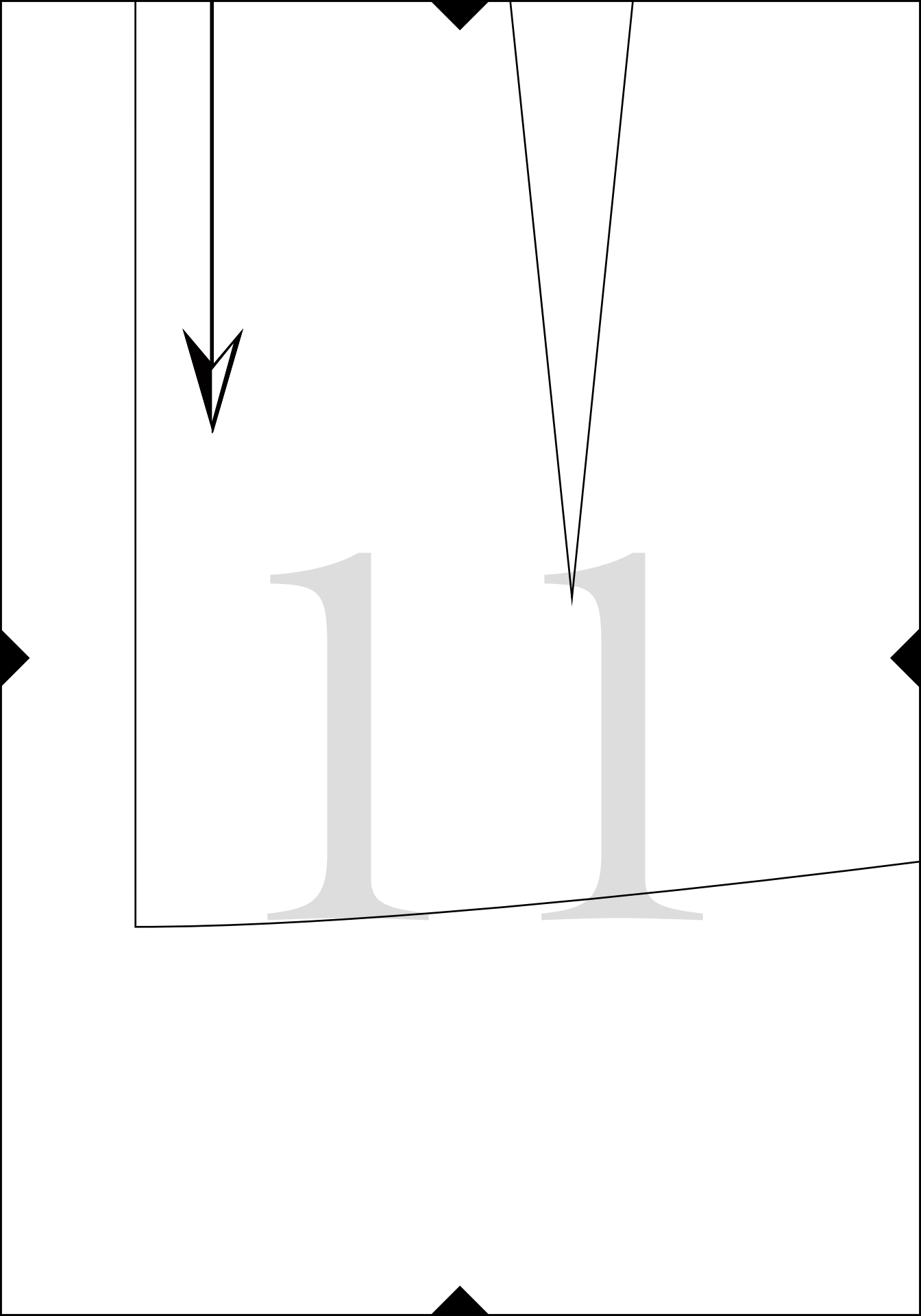


8



9

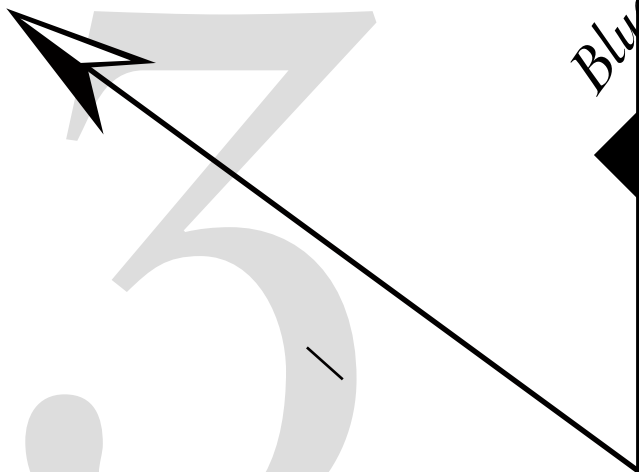
10



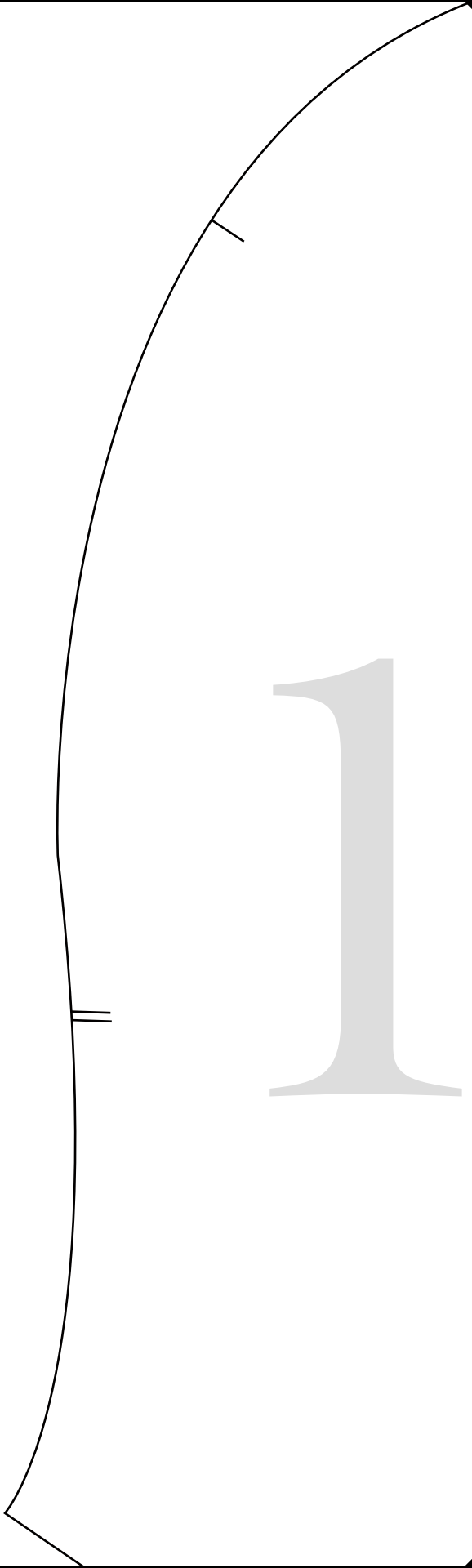


12

15



Blue



12 Hours Atelier
No. 0001
Bodice Sloper

SLEEVE

Size 30

Cut 2

(has no seam allowances)



15

16



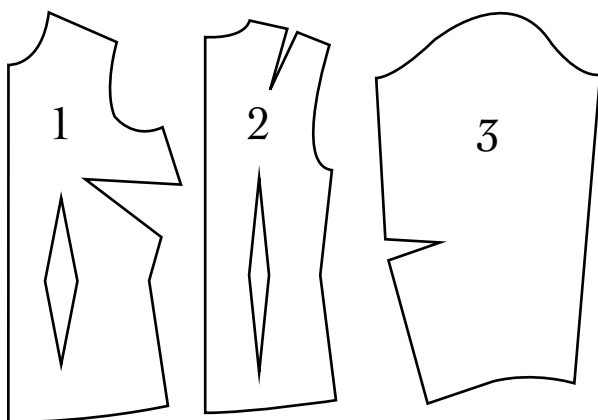
BH No. 0001

Women's Bodice Sloper for Nonstretch Fabrics

Includes three pieces, 1) bodice front, 2) bodice back, 3) sleeve.

For bodice front, choose variation with desired cup size.

Sloper pieces have no seam allowances.

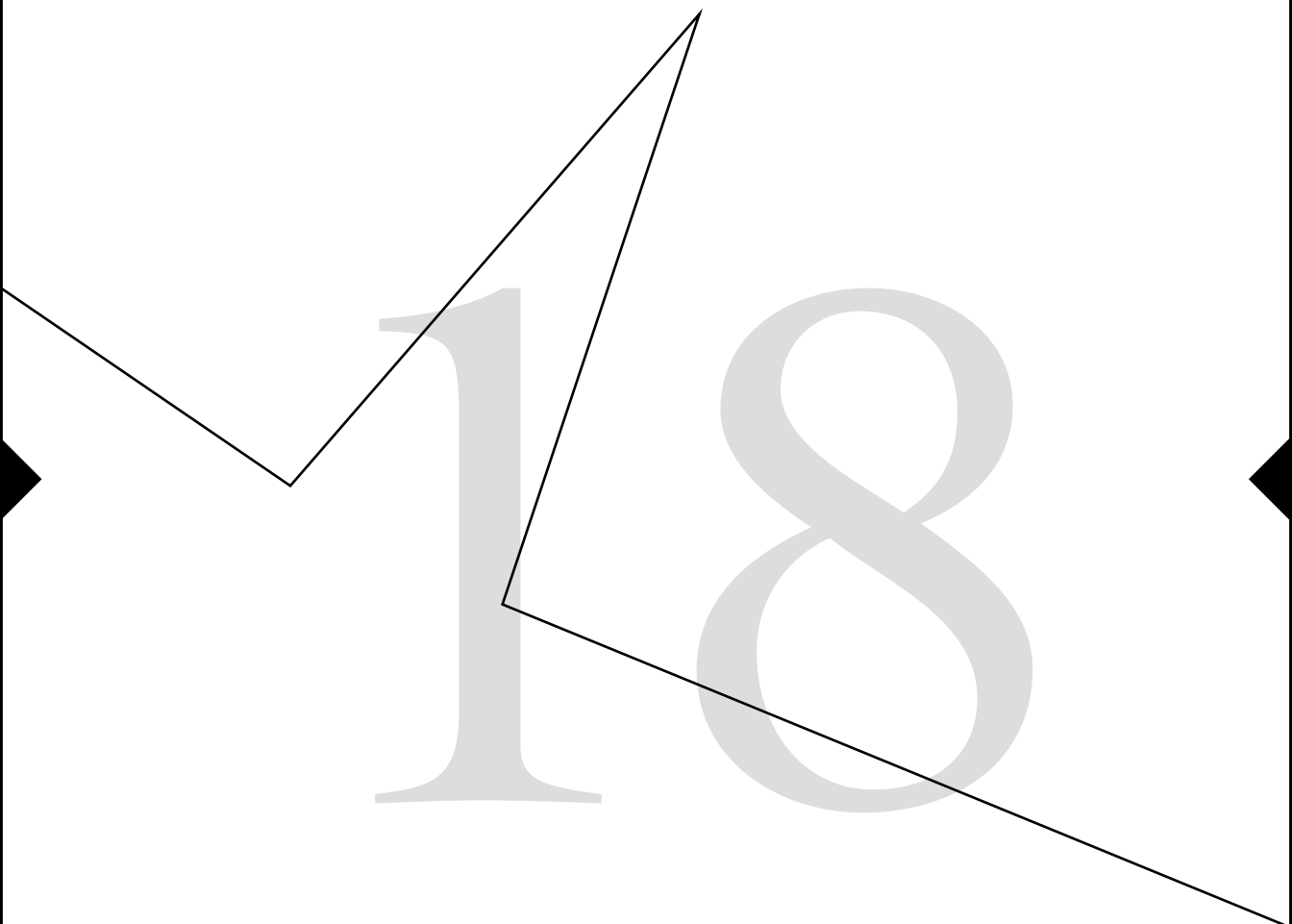


Test Square

3 inches x 3 inches

17

18



19



20