



*Blue Hours Atelier*

*No. 0001*

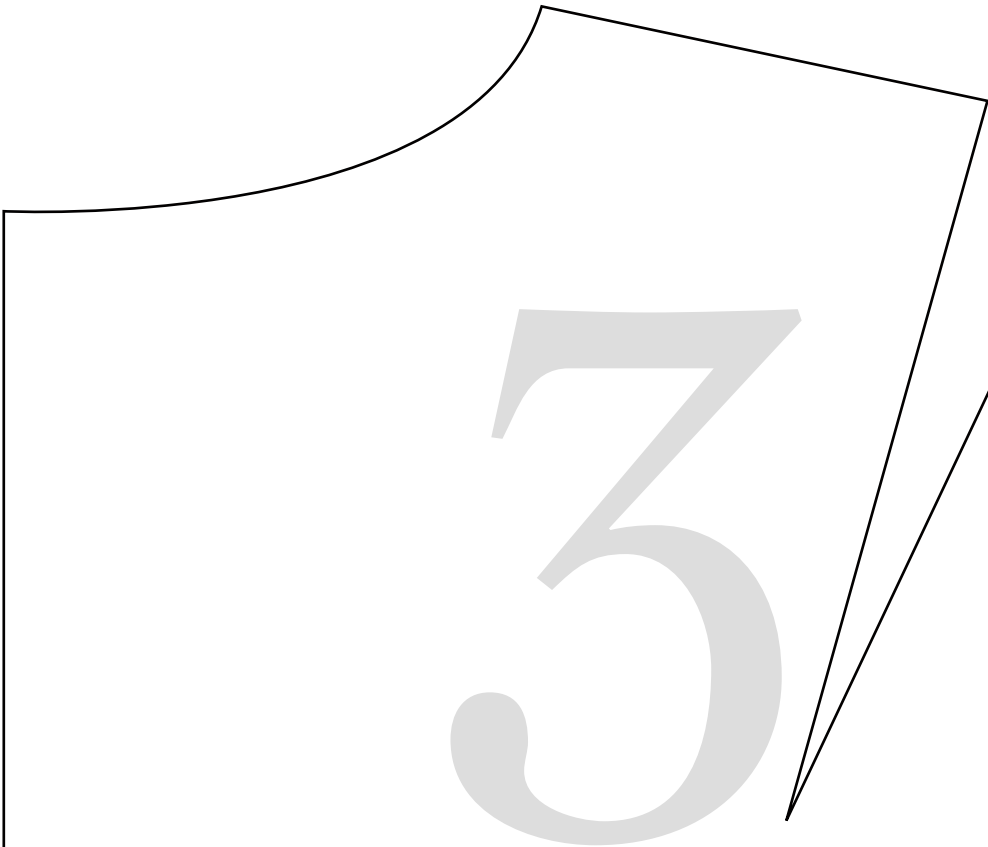
Bodice Sloper

FRONT

Size 31  
(D Cup)

Cut 2

2



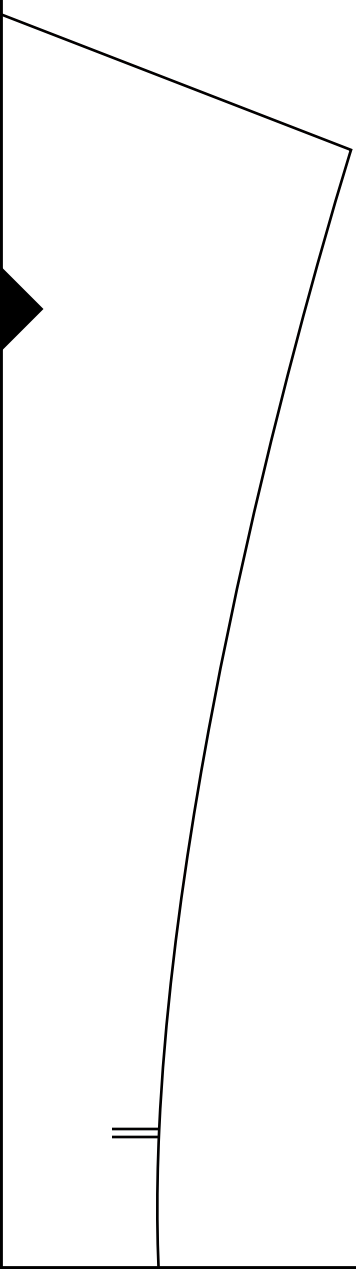
*Blue Hours Atelier*

*No. 0001*

Bodice Sloper

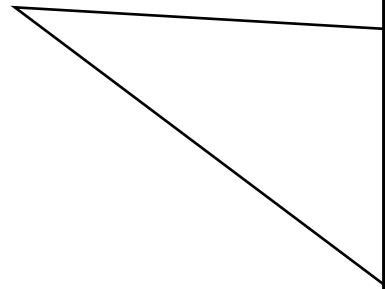
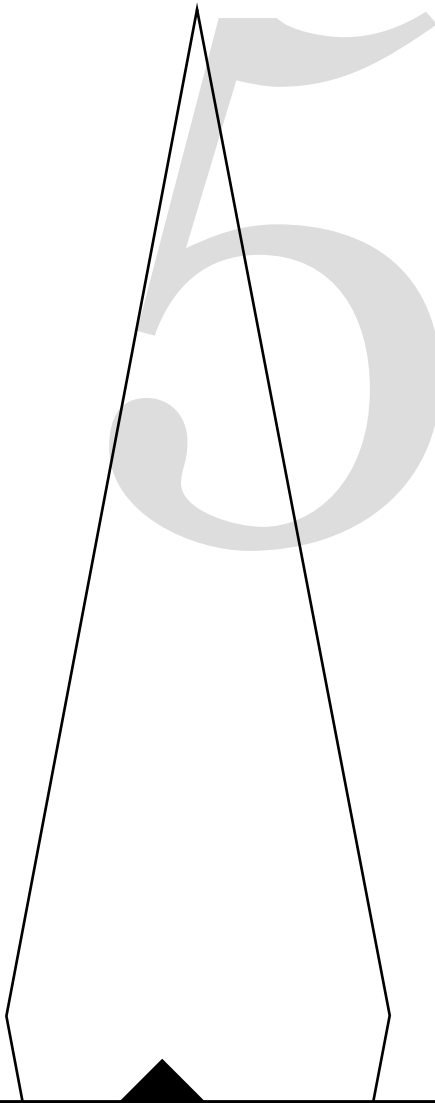
BACK

Size 31



4

(has no seam allowances)

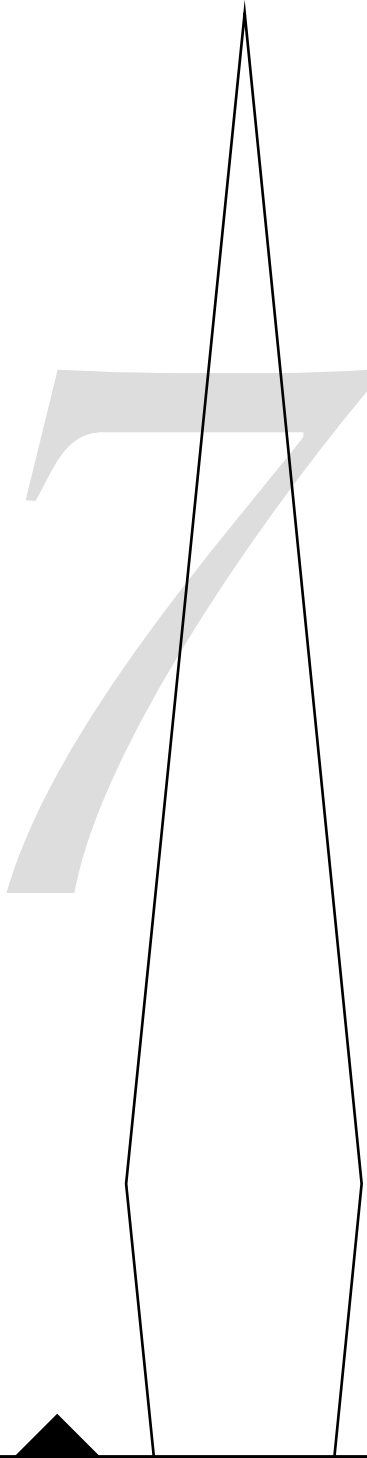


A large, light gray number 6 is centered on a white page. The page features several black geometric shapes and lines: a curved line at the top left, a vertical line on the left side, a diagonal line from the top center to the middle right, a diagonal line from the middle left to the bottom center, and four black triangles at the corners (top, bottom, left, and right).

6

# Cut 2

(has no seam allowances)





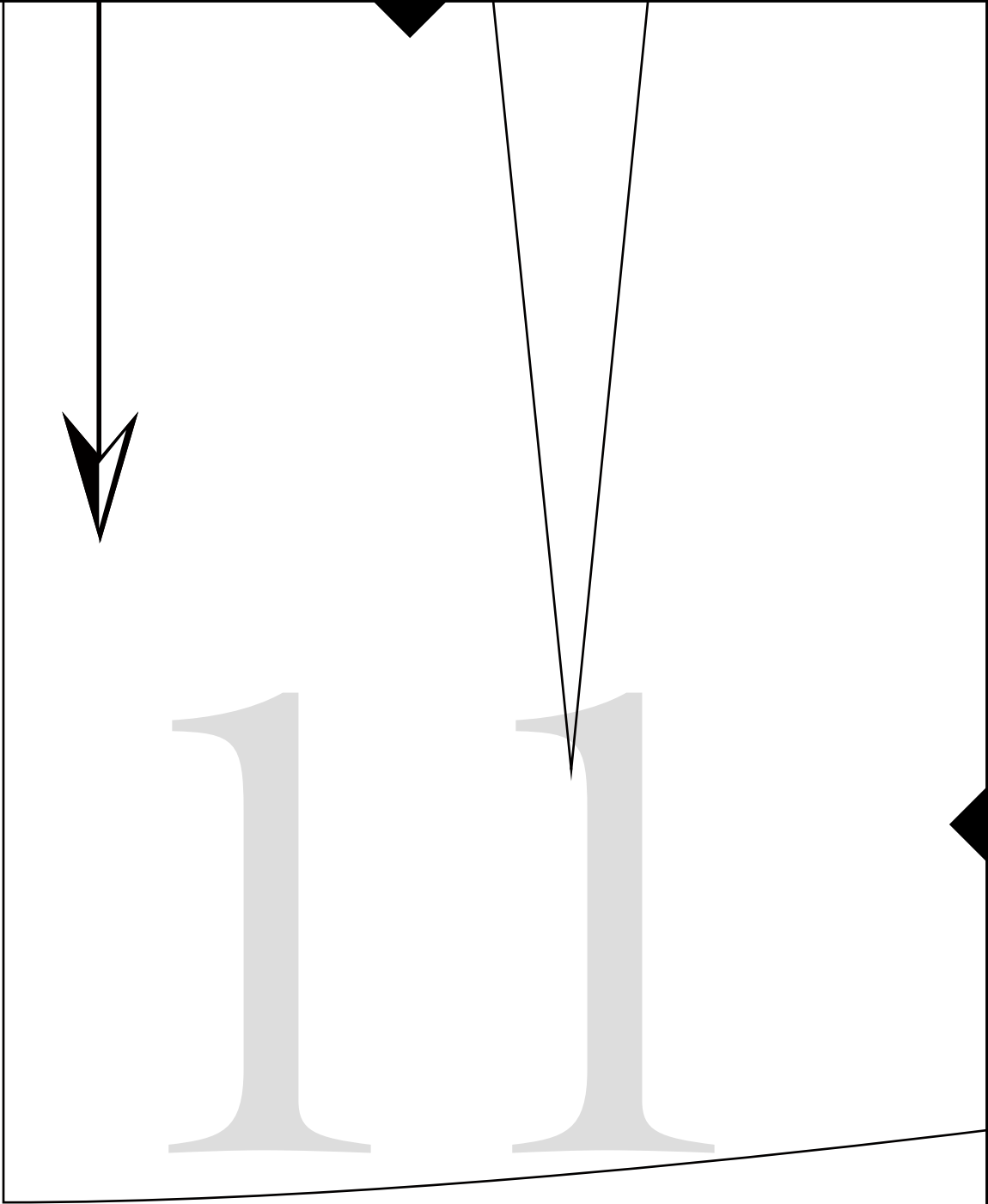
8



9



10



1 1



12

13



Blu

*24 Hours Atelier*  
*No. 0001*  
*Bodice Sloper*

**SLEEVE**

**Size 31**

**Cut 2**

*(has no seam allowances)*

**14**

15

# 16



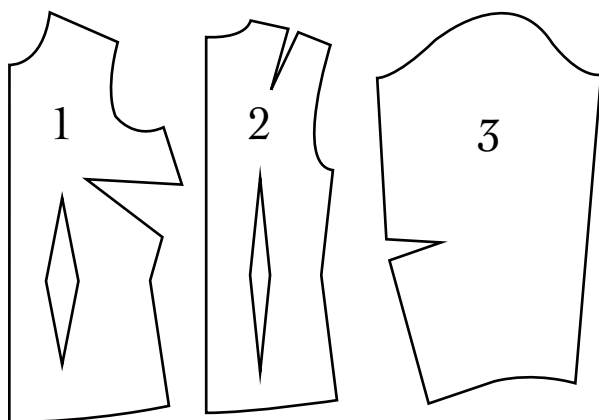
*BH No. 0001*

Women's Bodice Sloper for Nonstretch Fabrics

Includes three pieces, 1) bodice front, 2) bodice back, 3) sleeve.

For bodice front, choose variation with desired cup size.

Sloper pieces have no seam allowances.



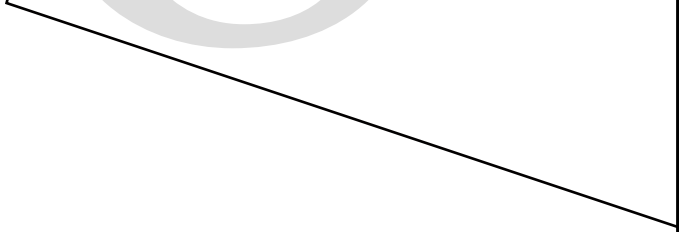
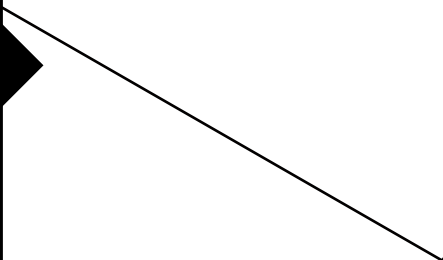
*Test Square*

3 inches x 3 inches



17

18



19

The image features a white background with a black border. In the top-left corner, there is a large, white, curved shape that resembles a stylized 'L' or a decorative element. In the bottom-left corner, there is a black, curved shape that mirrors the top-left one. The number '20' is centered in the middle of the page in a light gray, serif font.

20