



Blue Hours Atelier

No. 0001

Bodice Sloper

FRONT

Size 32
(C Cup)

Cut 2

2



3

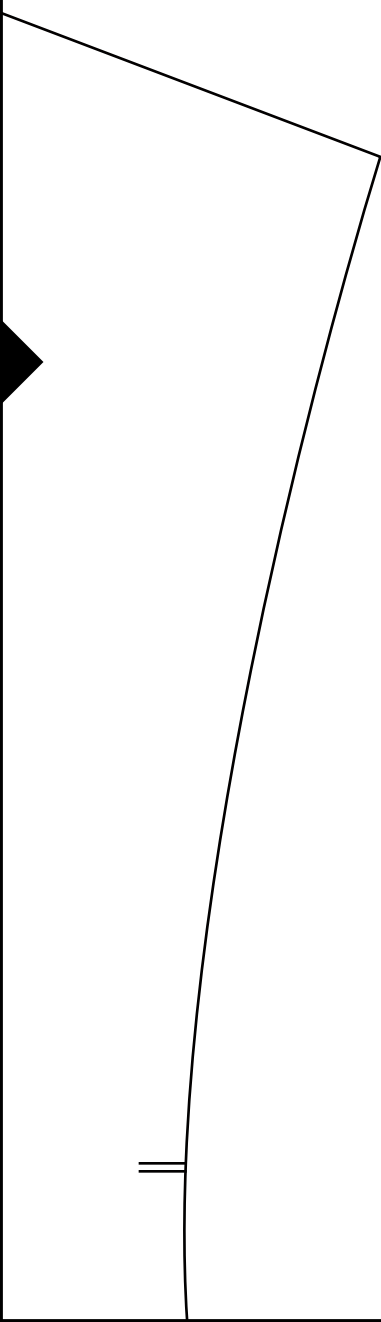
Blue Hours Atelier

No. 0001

Bodice Sloper

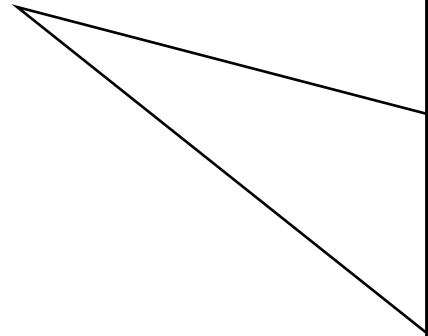
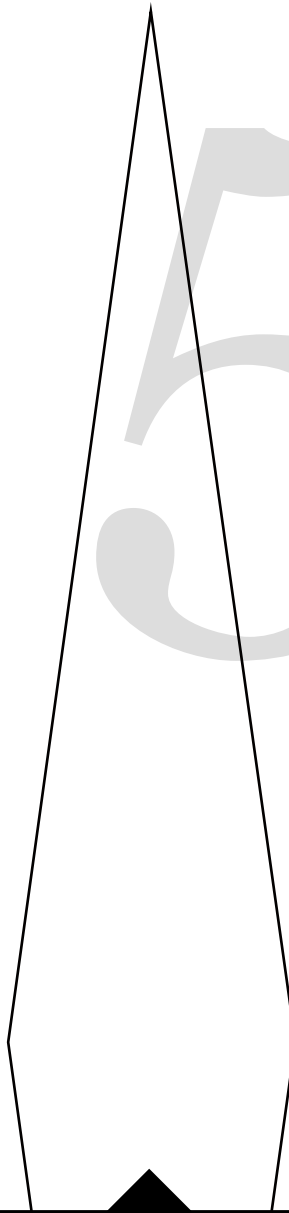
BACK

Size 32



4

(has no seam allowances)

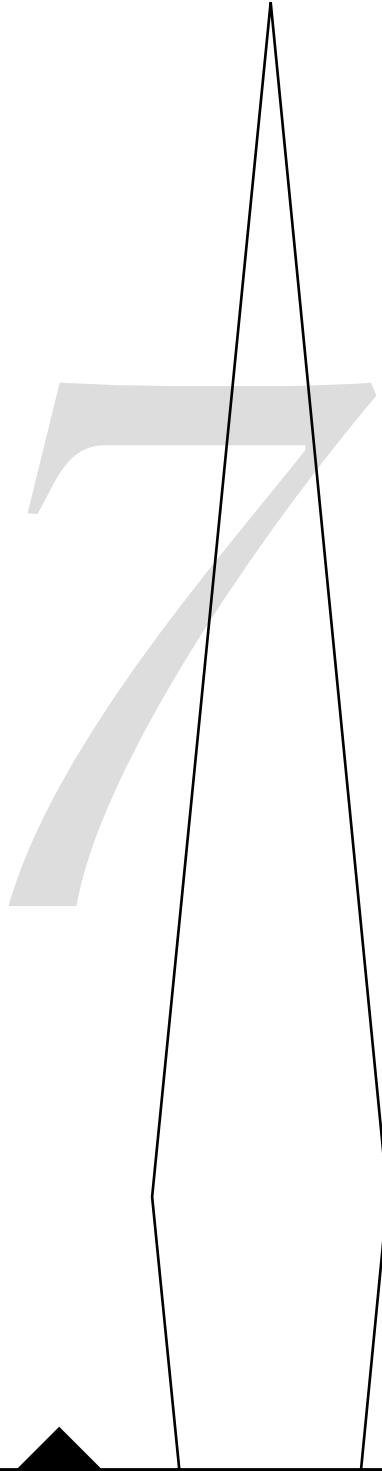




6

Cut 2

(has no seam allowances)



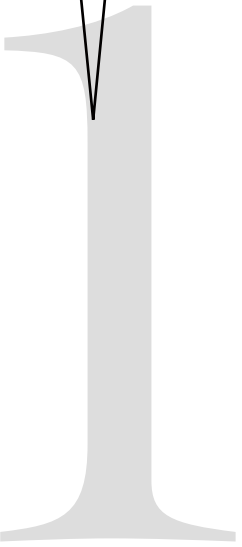
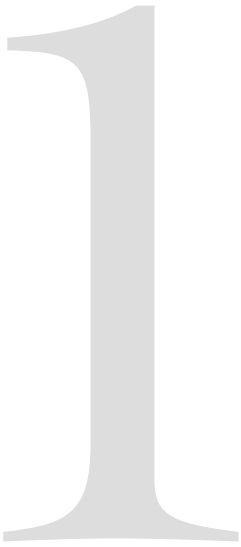
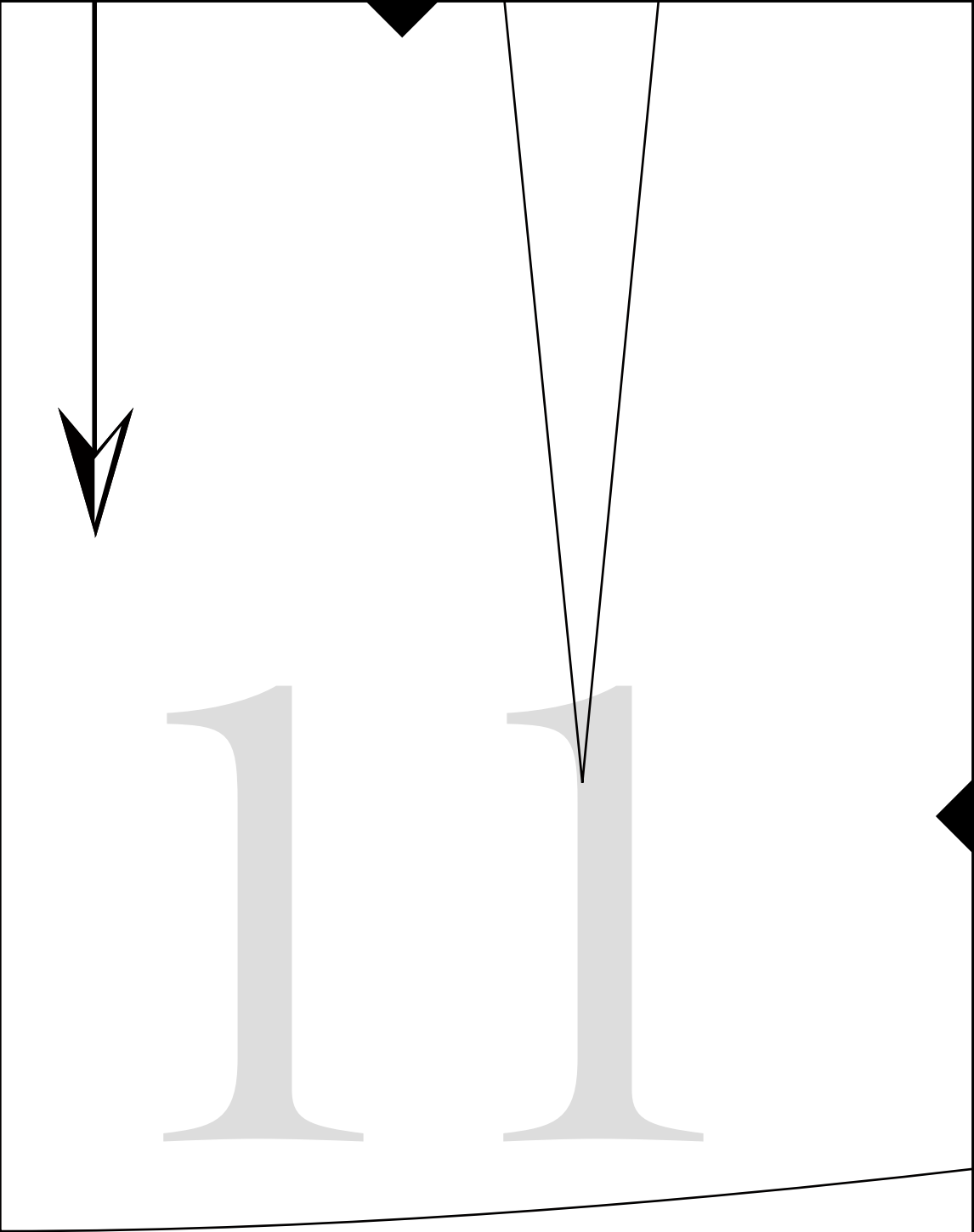


8



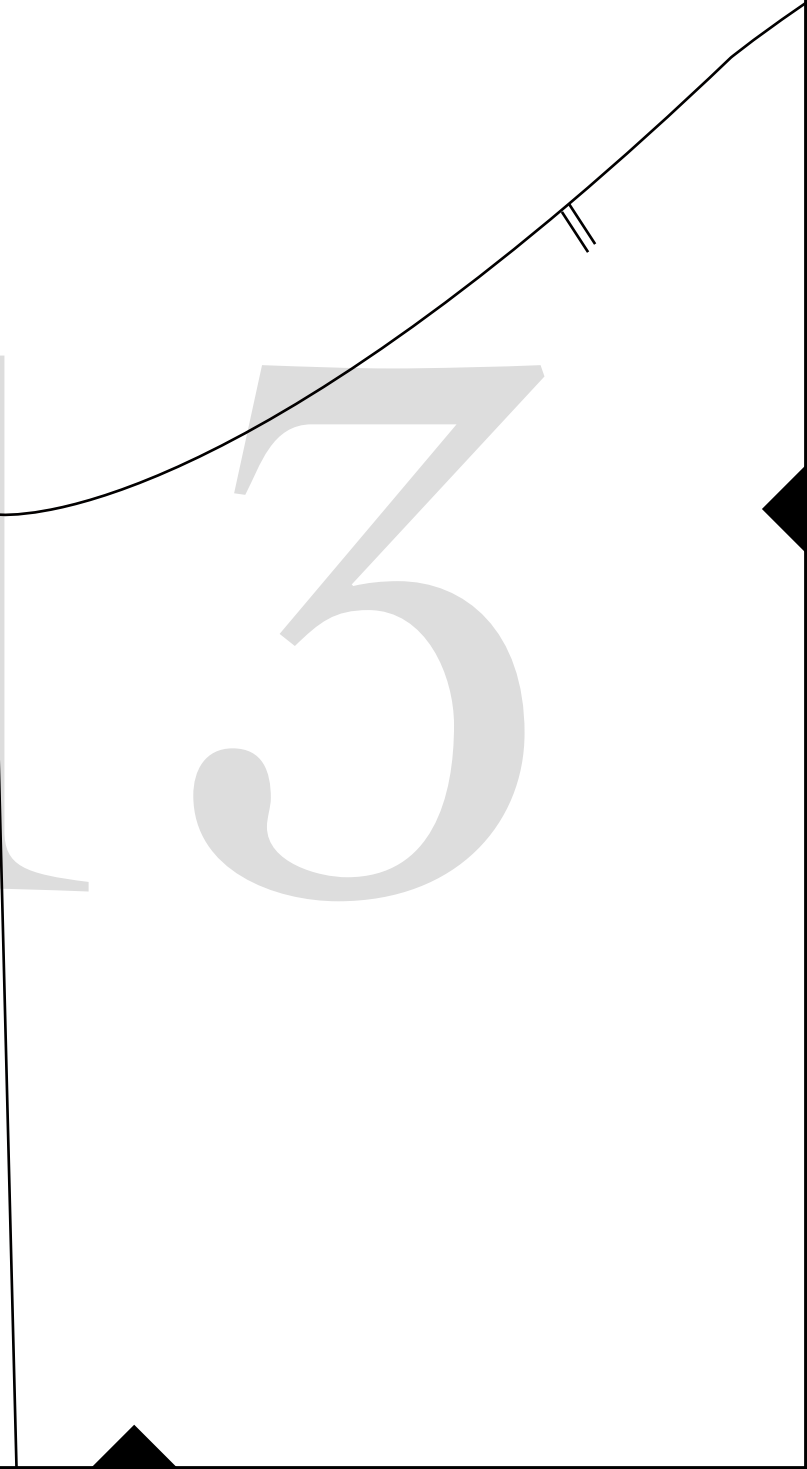
9

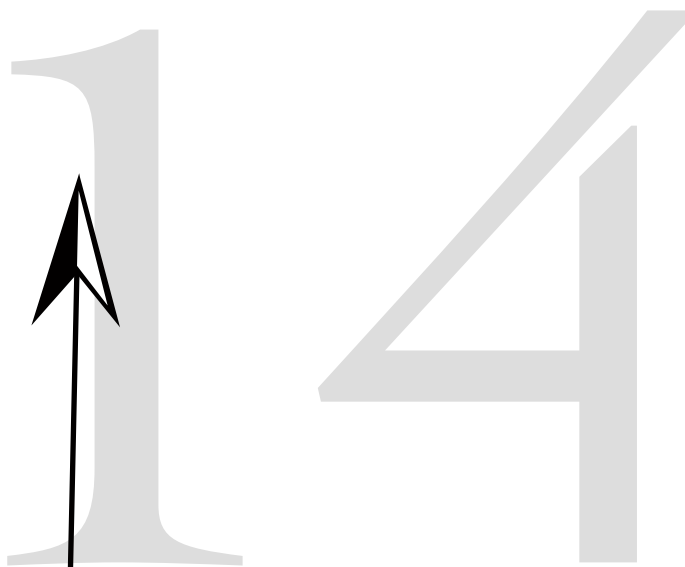
10



12

13





14

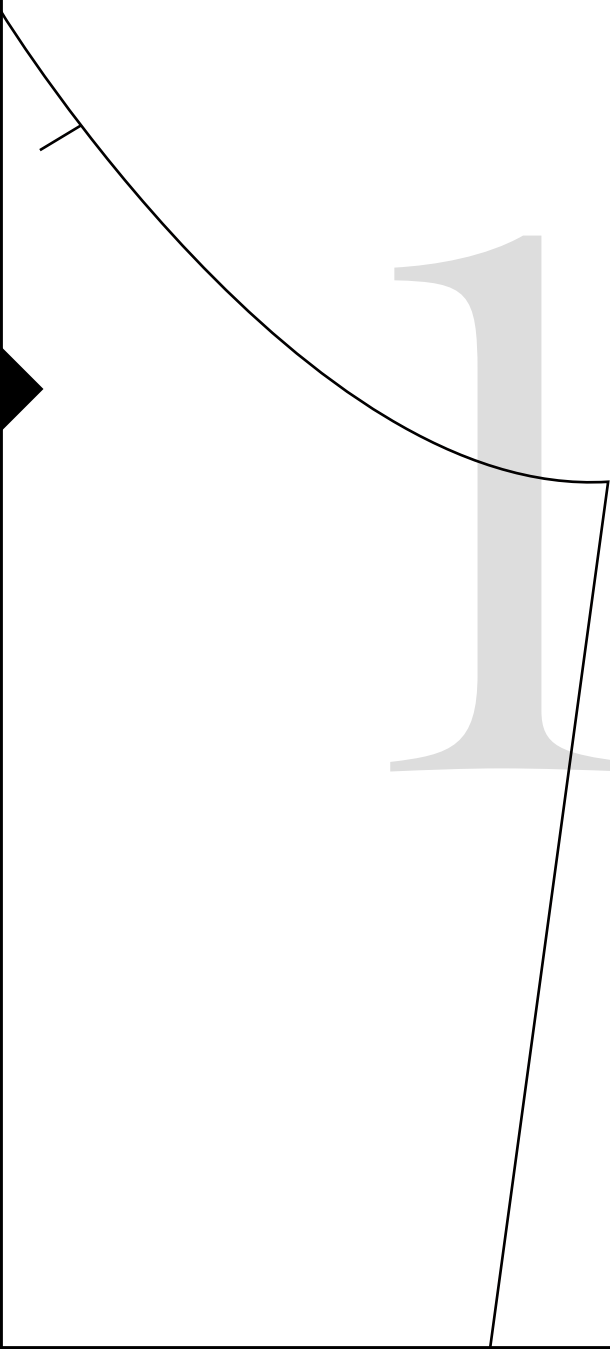
Blue Hours Atelier

No. 0001

Bodice Sloper

SLEEVE

15



16



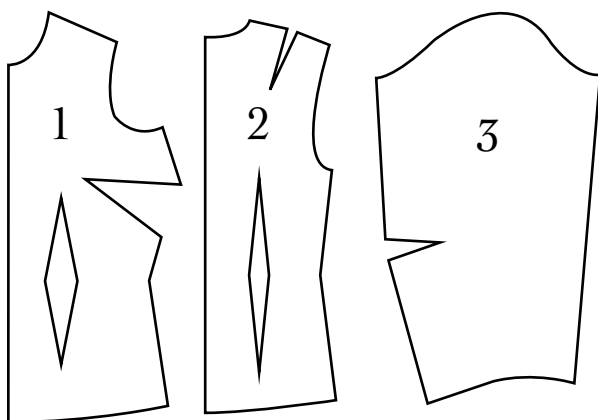
BH No. 0001

Women's Bodice Sloper for Nonstretch Fabrics

Includes three pieces, 1) bodice front, 2) bodice back, 3) sleeve.

For bodice front, choose variation with desired cup size.

Sloper pieces have no seam allowances.



Test Square

3 inches x 3 inches

17

Size 32

Cut 2

(has no seam allowances)

18



19

20



21

22