



*Blue Hours Atelier*

*No. 0001*

Bodice Sloper

FRONT

Size 32  
(D Cup)

Cut 2

2



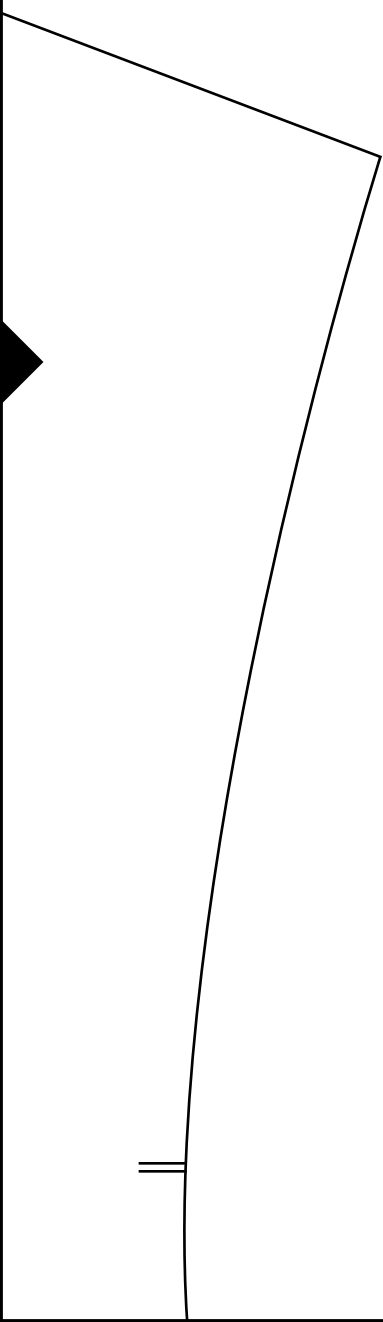
*Blue Hours Atelier*

*No. 0001*

Bodice Sloper

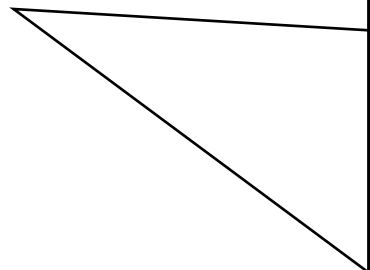
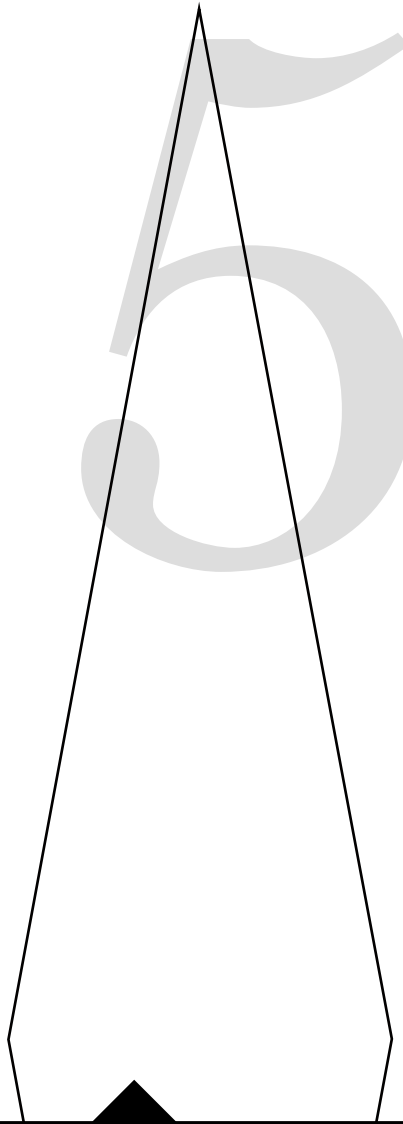
BACK

Size 32



4

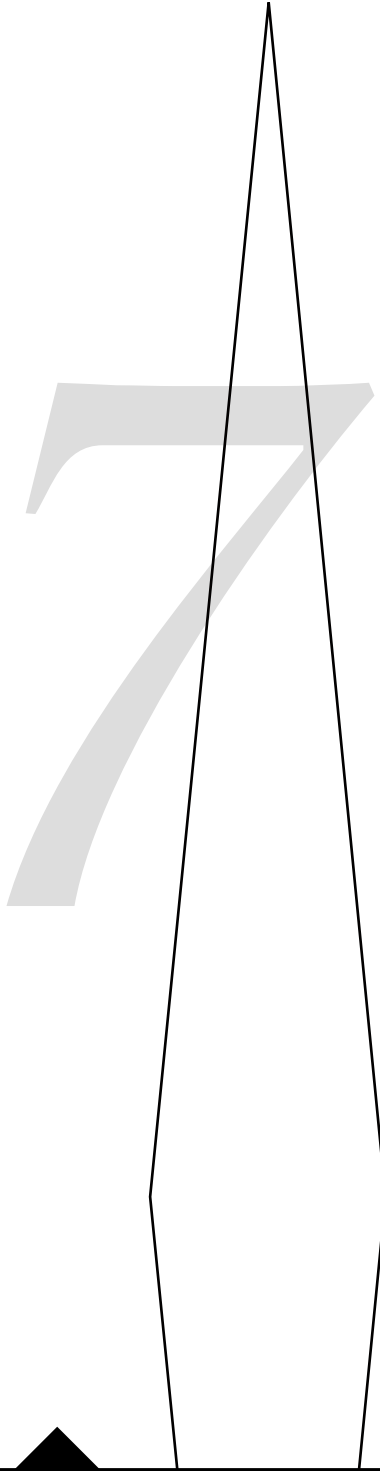
(has no seam allowances)



A large, light gray number '6' is centered on a white page. The page features several black geometric shapes and lines: a large black triangle at the top left, a black triangle at the top right, a black triangle at the bottom left, and a black triangle at the bottom right. A black line runs horizontally across the middle of the page, and another black line runs diagonally from the top left towards the bottom right. The number '6' is rendered in a simple, sans-serif font.

# Cut 2

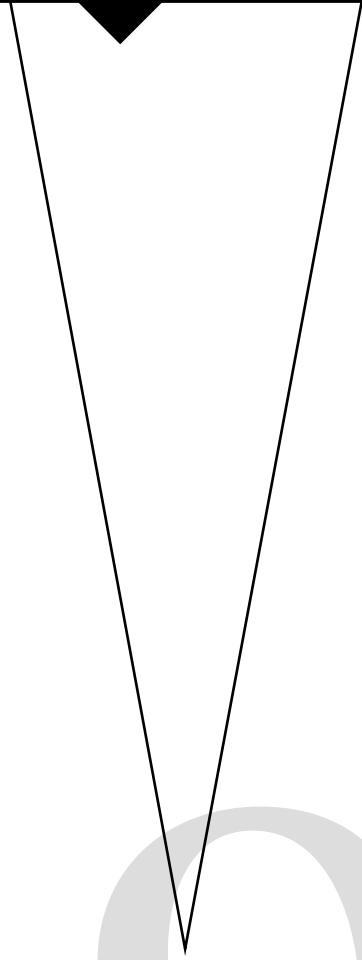
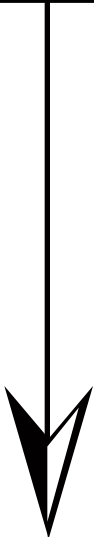
(has no seam allowances)





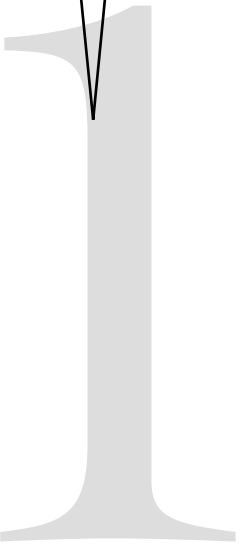
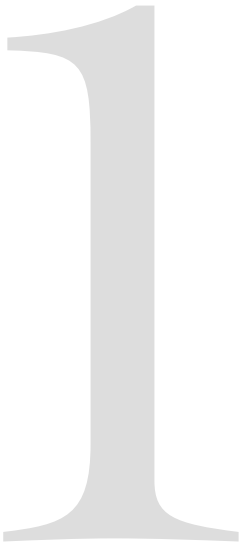
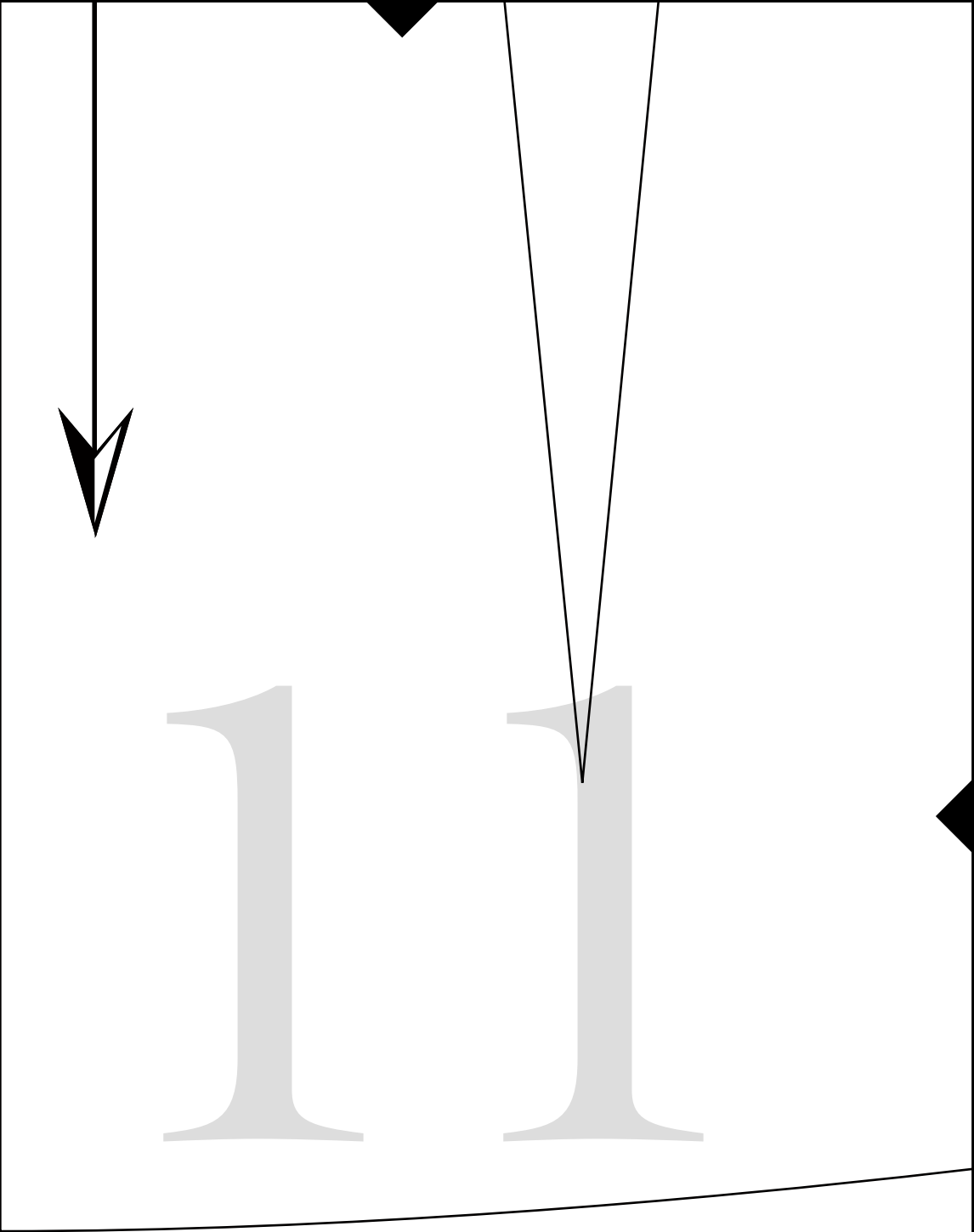
8





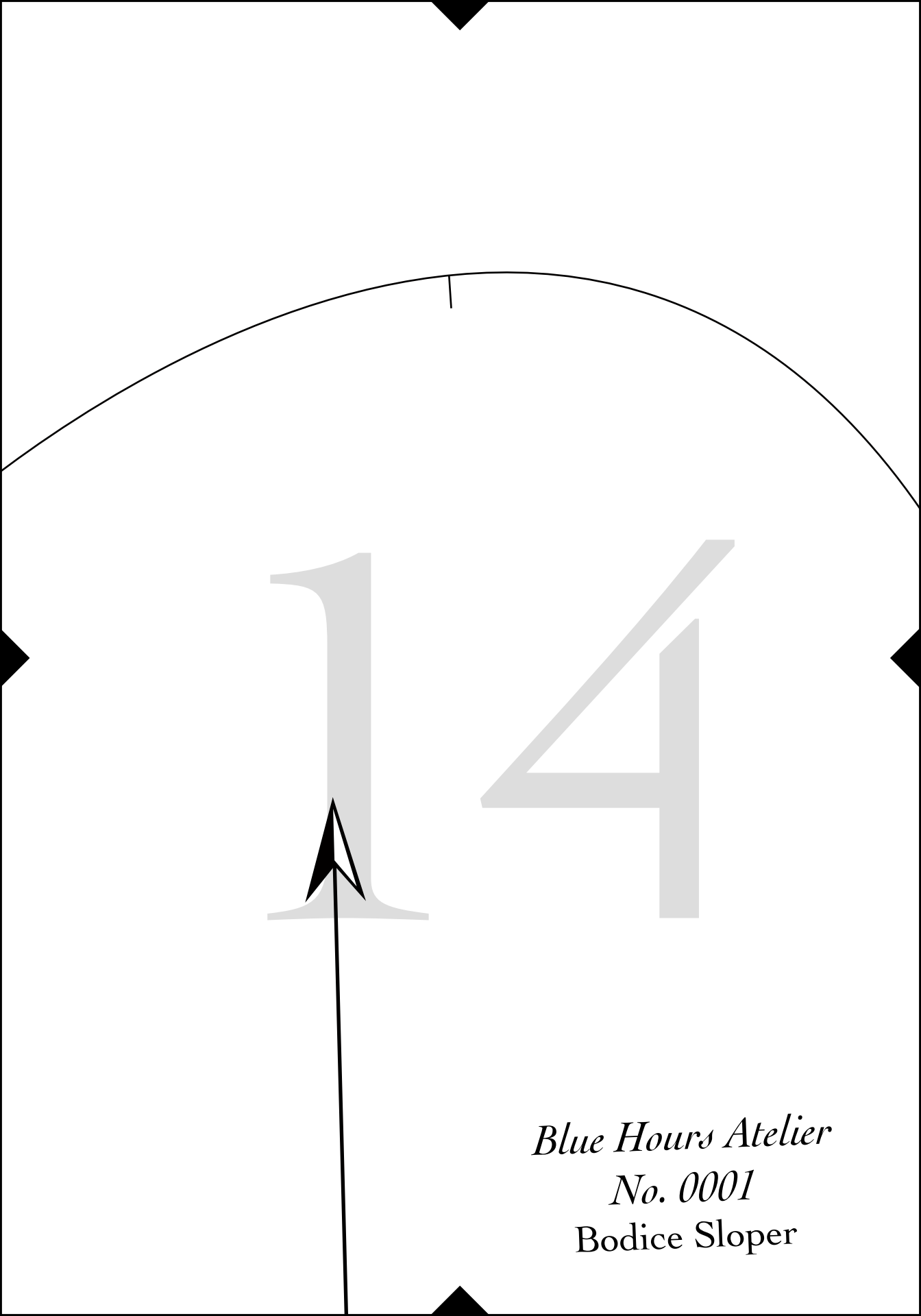
9

10



12

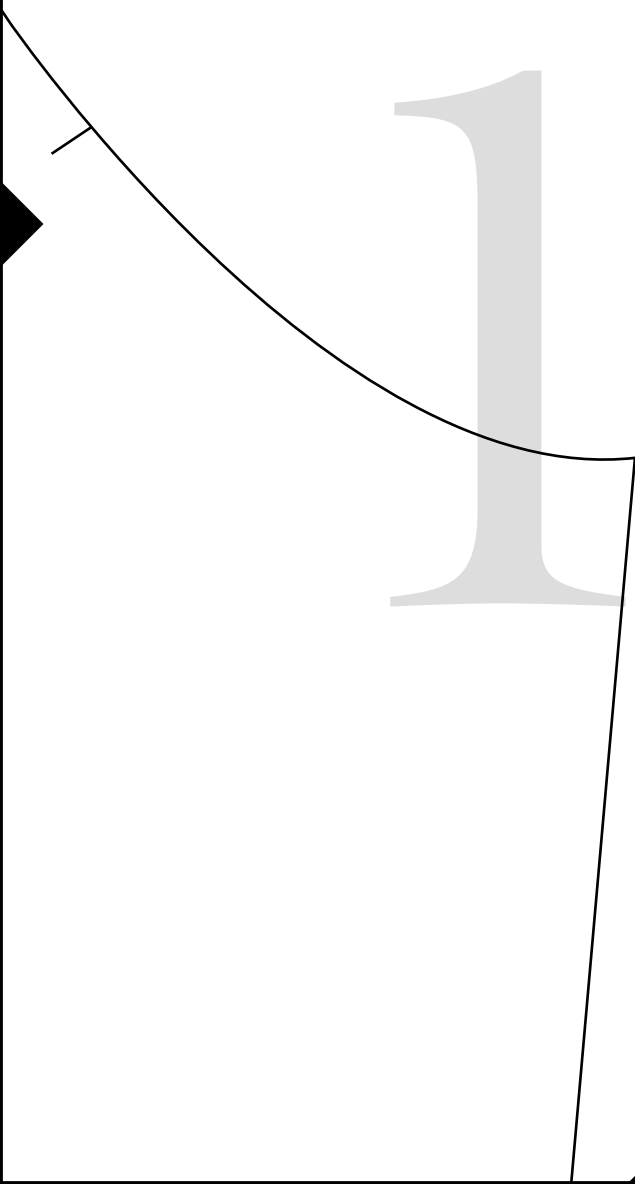
13



14

*Blue Hours Atelier*  
*No. 0001*  
Bodice Sloper

15



# 16



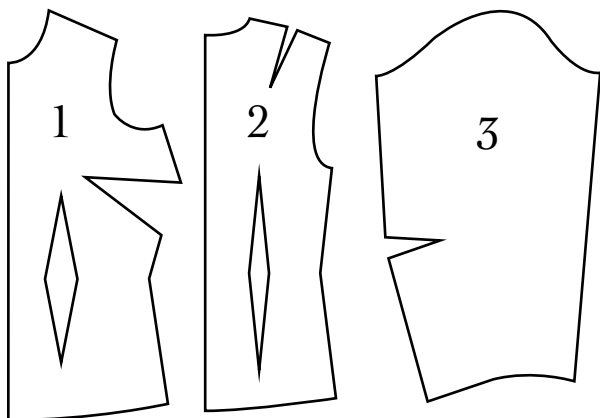
*BH No. 0001*

Women's Bodice Sloper for Nonstretch Fabrics

Includes three pieces, 1) bodice front, 2) bodice back, 3) sleeve.

For bodice front, choose variation with desired cup size.

Sloper pieces have no seam allowances.



*Test Square*

3 inches x 3 inches



17

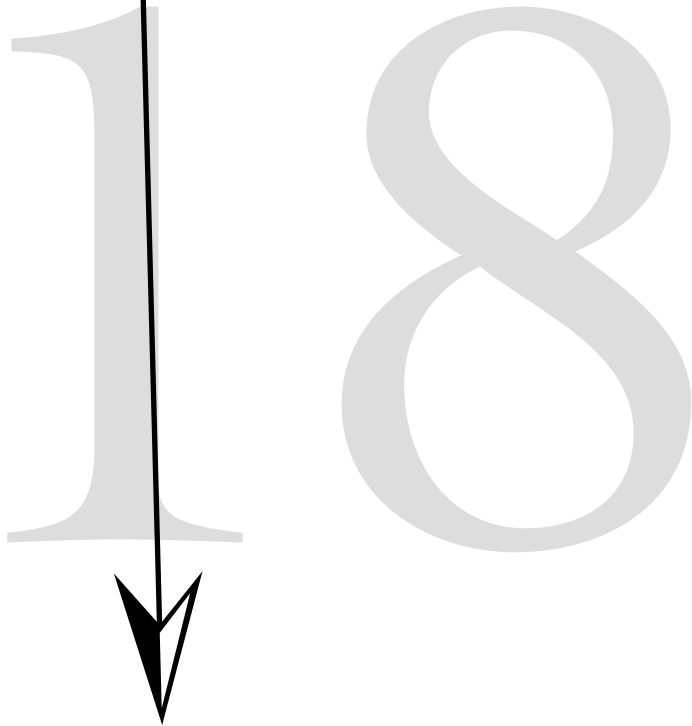
SLEEVE

Size 32

Cut 2

(has no seam allowances)

18



19

20

21

22