

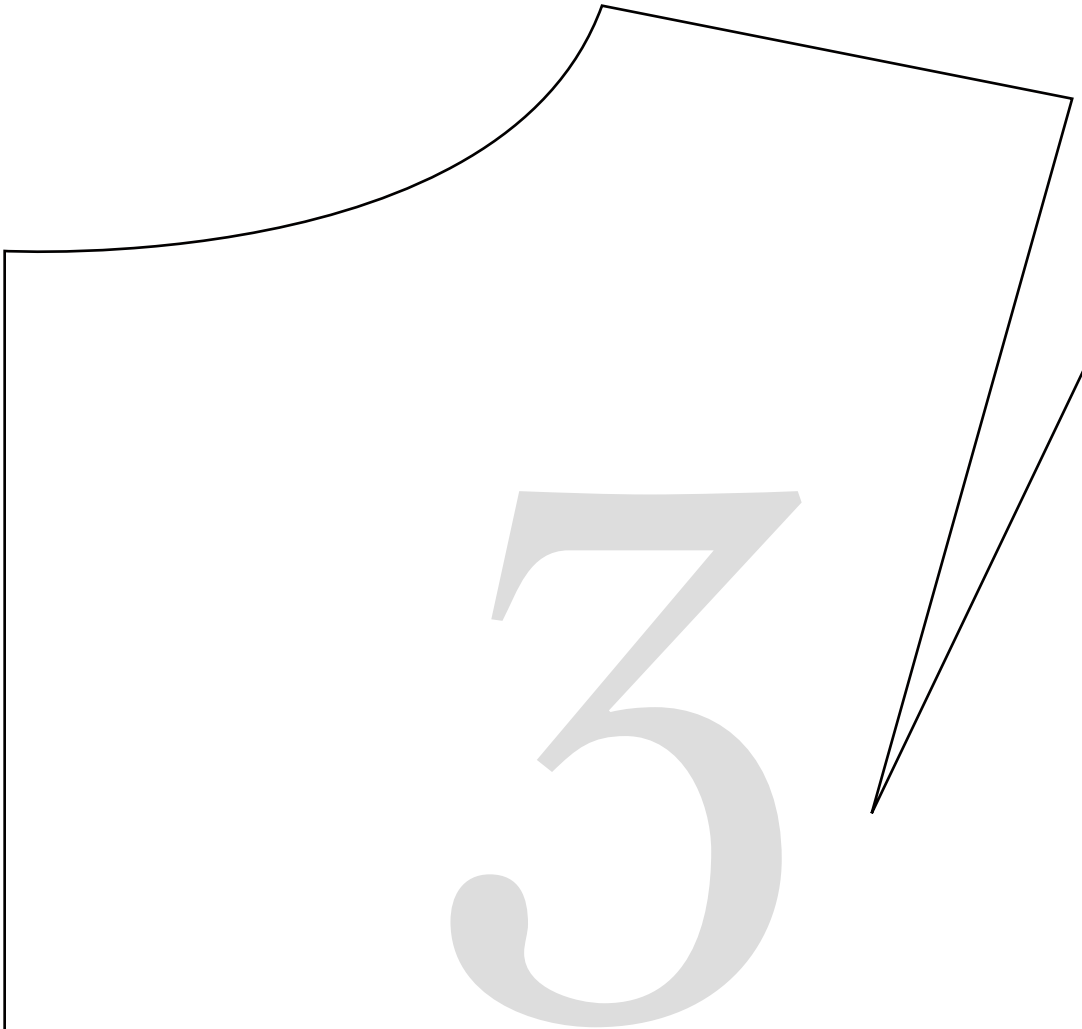
*Blue Hours Atelier*  
*No. 0001*  
Bodice Sloper

FRONT

Size 36  
(B Cup)

Cut 2

2



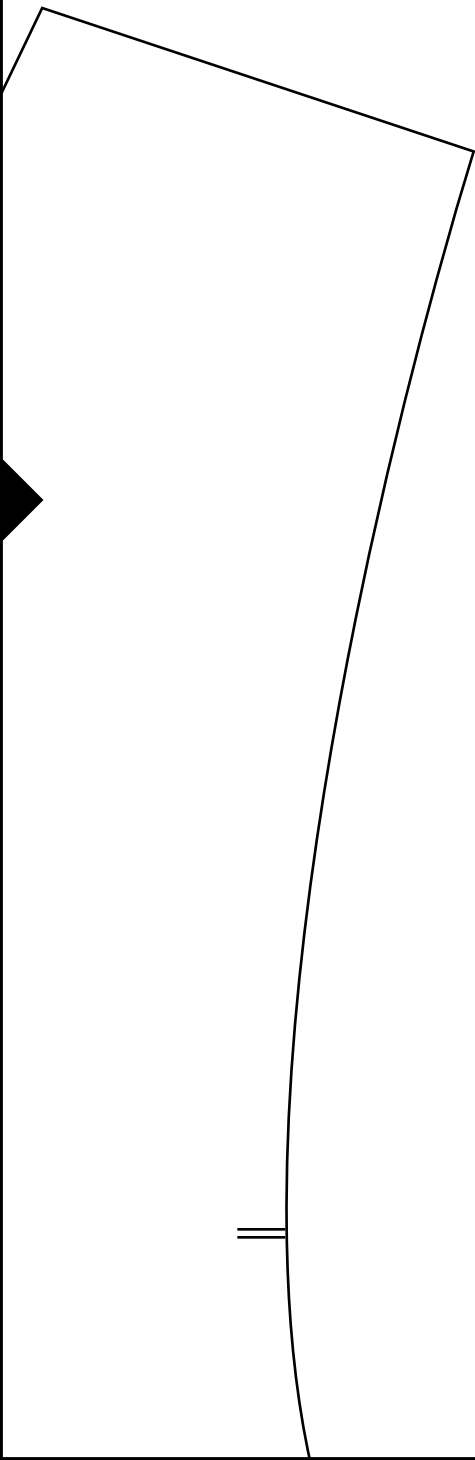
*Blue Hours Atelier*

*No. 0001*

Bodice Sloper

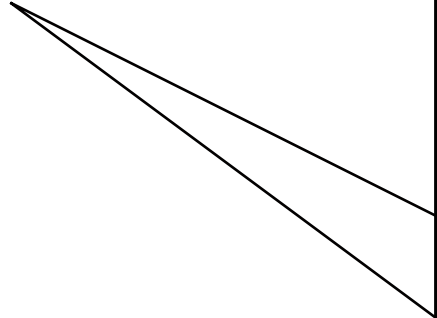
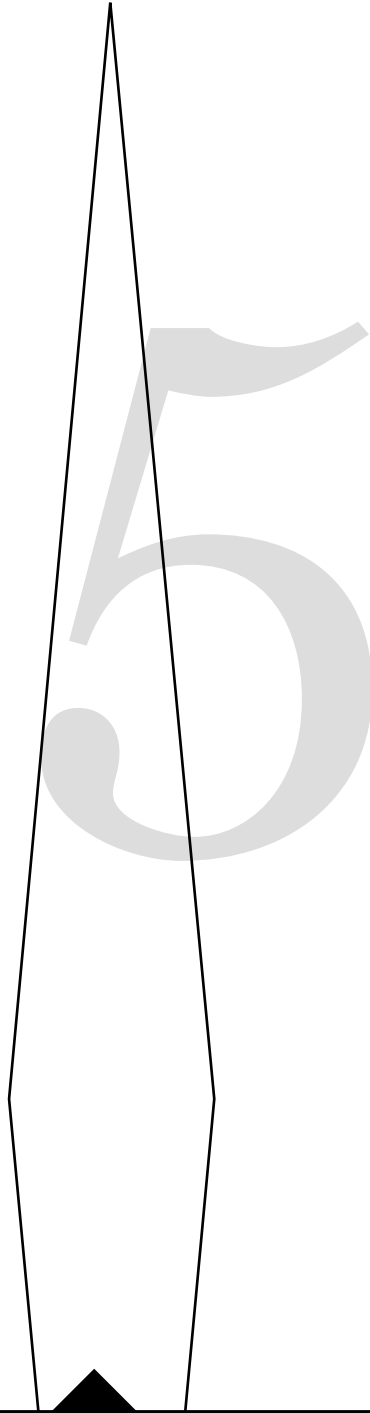
BACK

Size 36



4

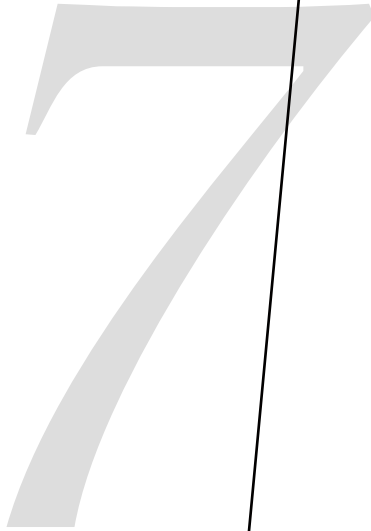
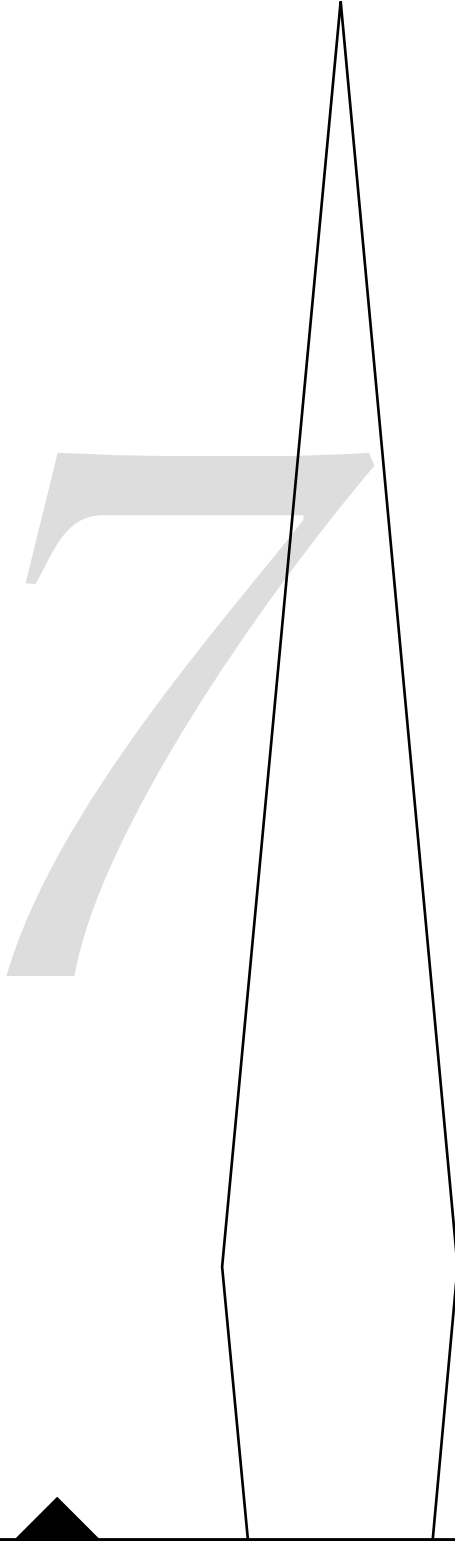
(has no seam allowances)



6

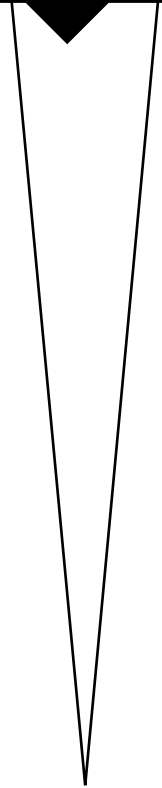
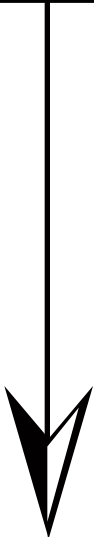
# Cut 2

(has no seam allowances)



8





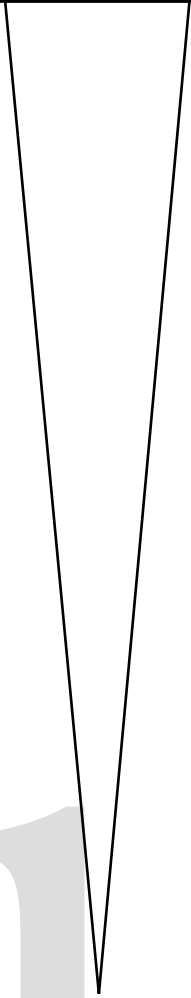
9

10



1

1



12

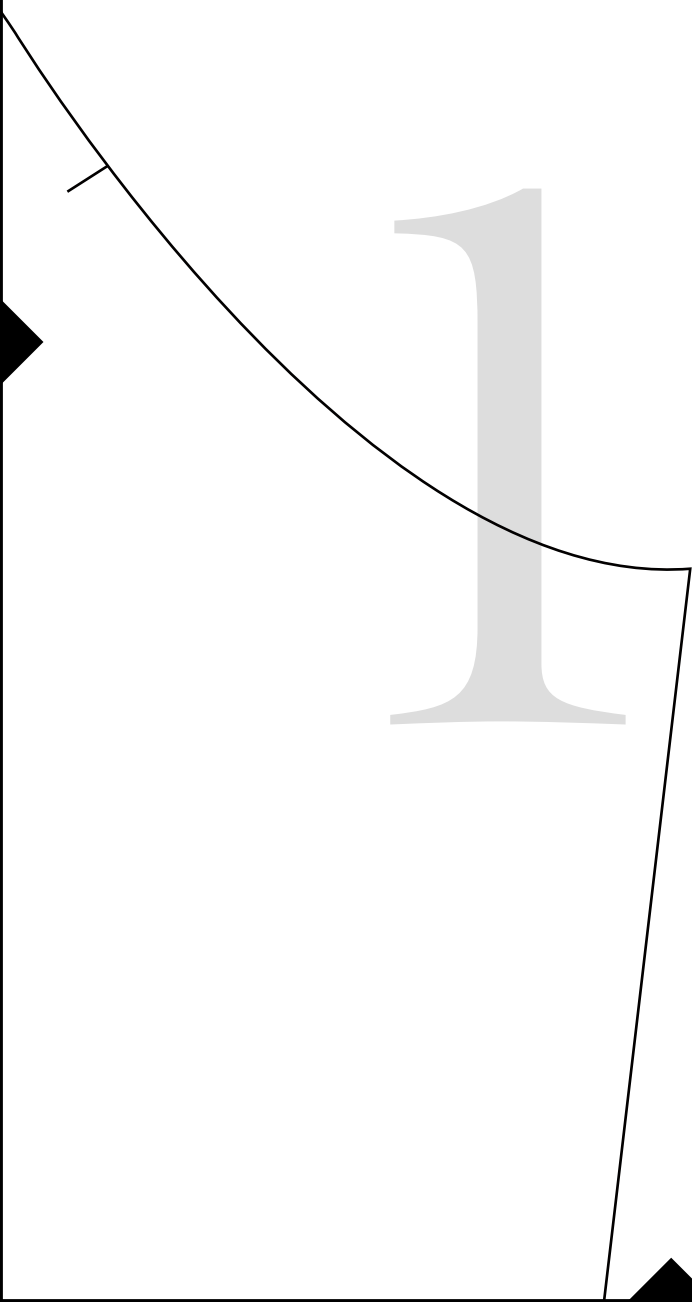
15



14

*Blue Hours Atelier*  
*No. 0001*  
Bodice Sloper

15



# 16



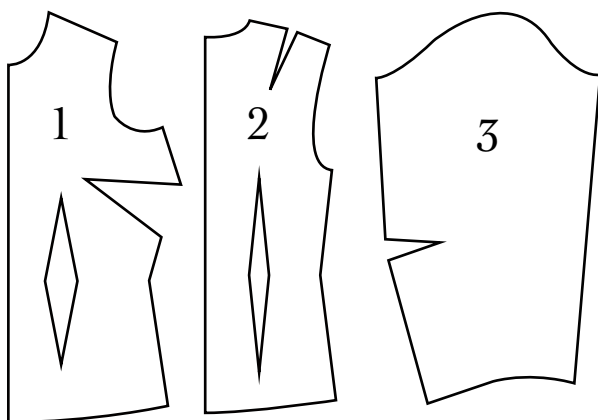
*BH No. 0001*

Women's Bodice Sloper for Nonstretch Fabrics

Includes three pieces, 1) bodice front, 2) bodice back, 3) sleeve.

For bodice front, choose variation with desired cup size.

Sloper pieces have no seam allowances.



*Test Square*

3 inches x 3 inches



17

SLEEVE

Size 36

Cut 2

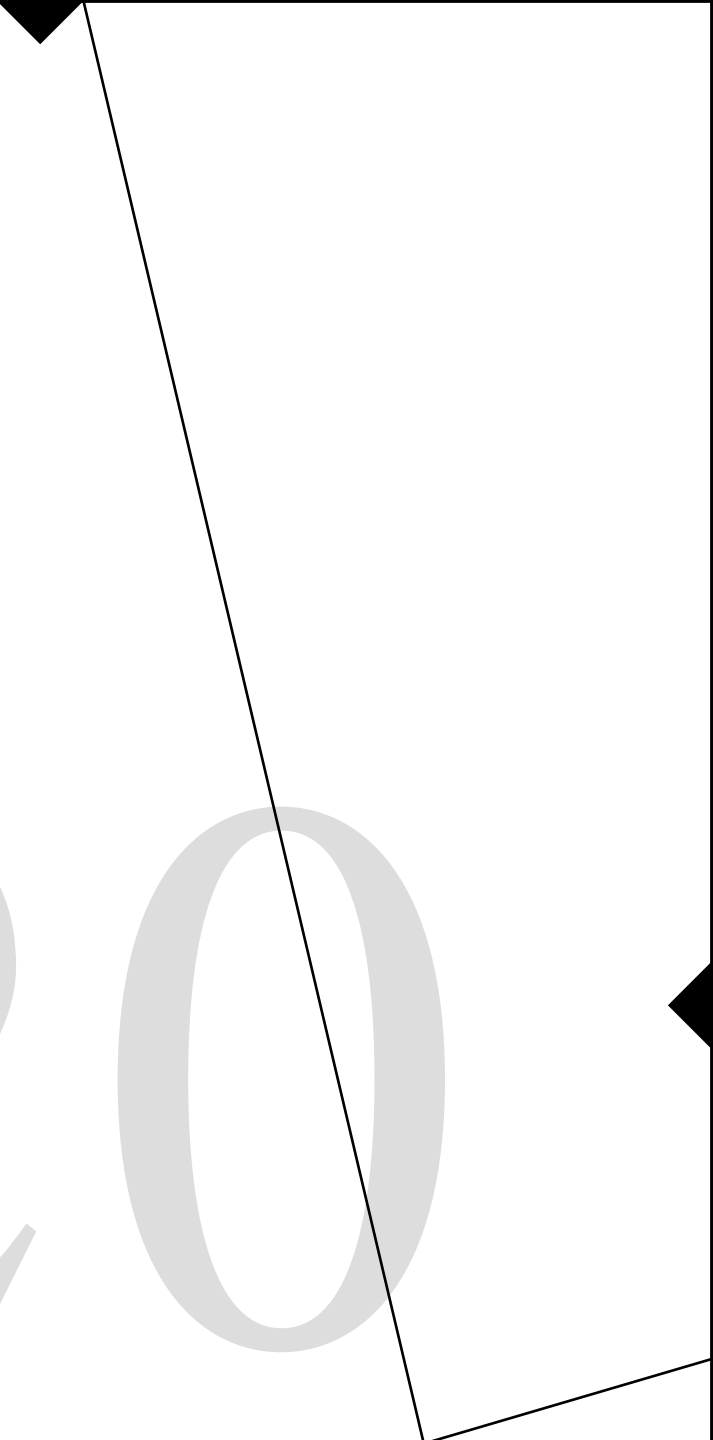
(has no seam allowances)

18




19

20



21



22