

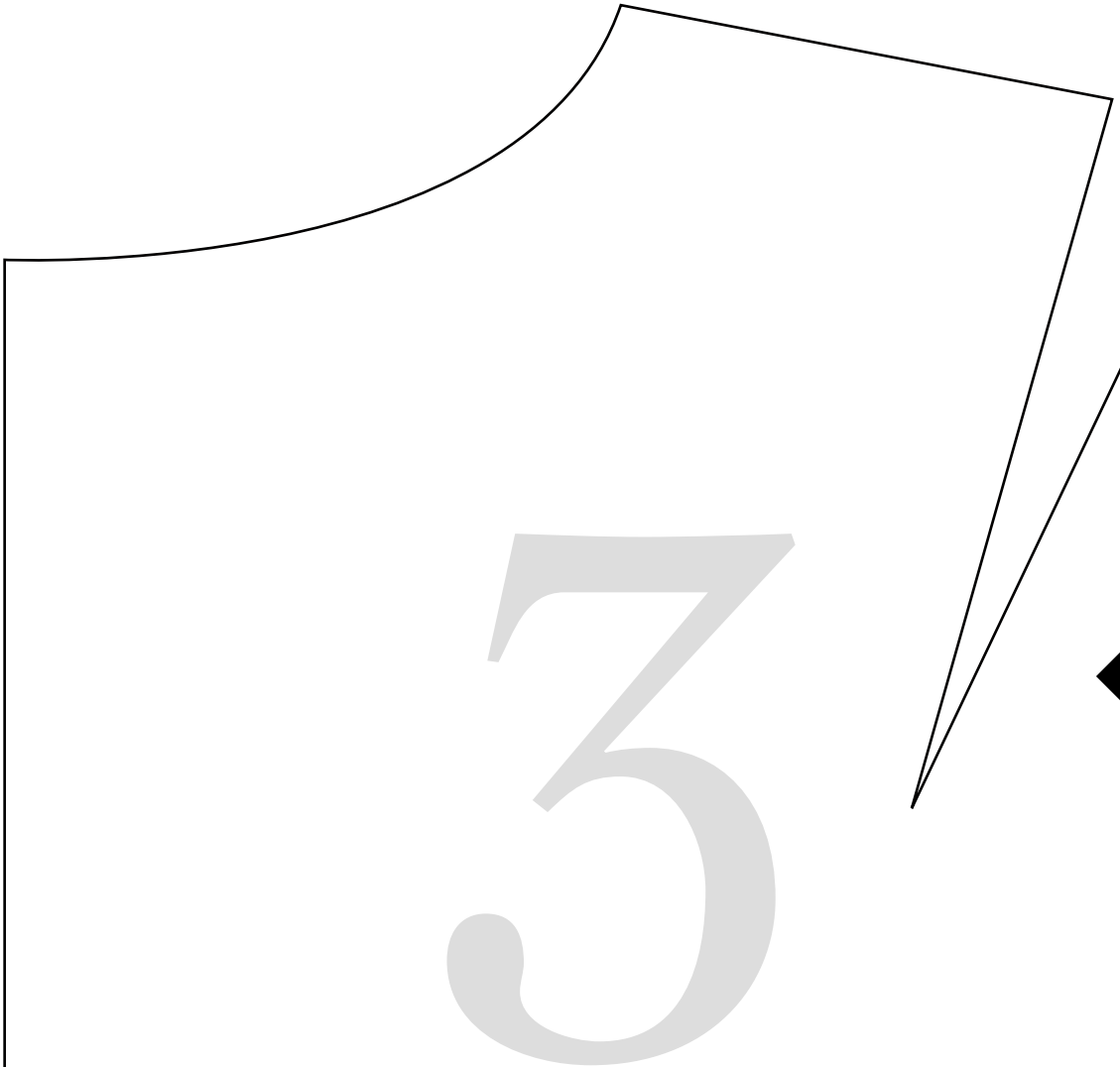
*Blue Hours Atelier*  
*No. 0001*  
Bodice Sloper

FRONT

Size 38  
(C Cup)

Cut 2

2



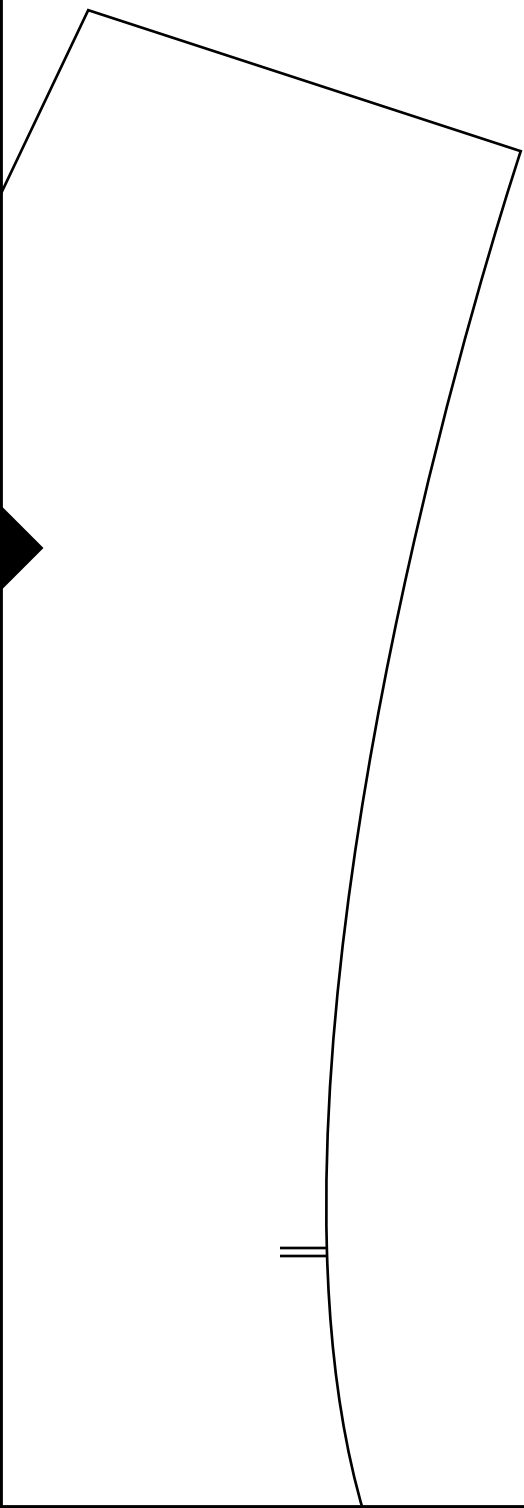
*Blue Hours Atelier*

*No. 0001*

Bodice Sloper

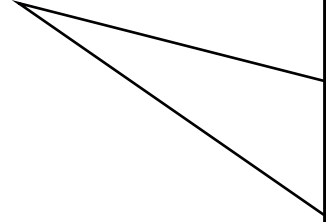
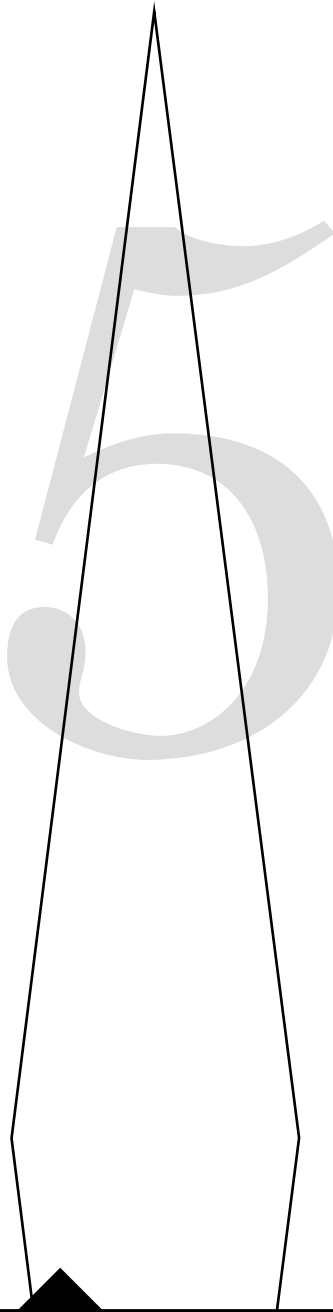
BACK

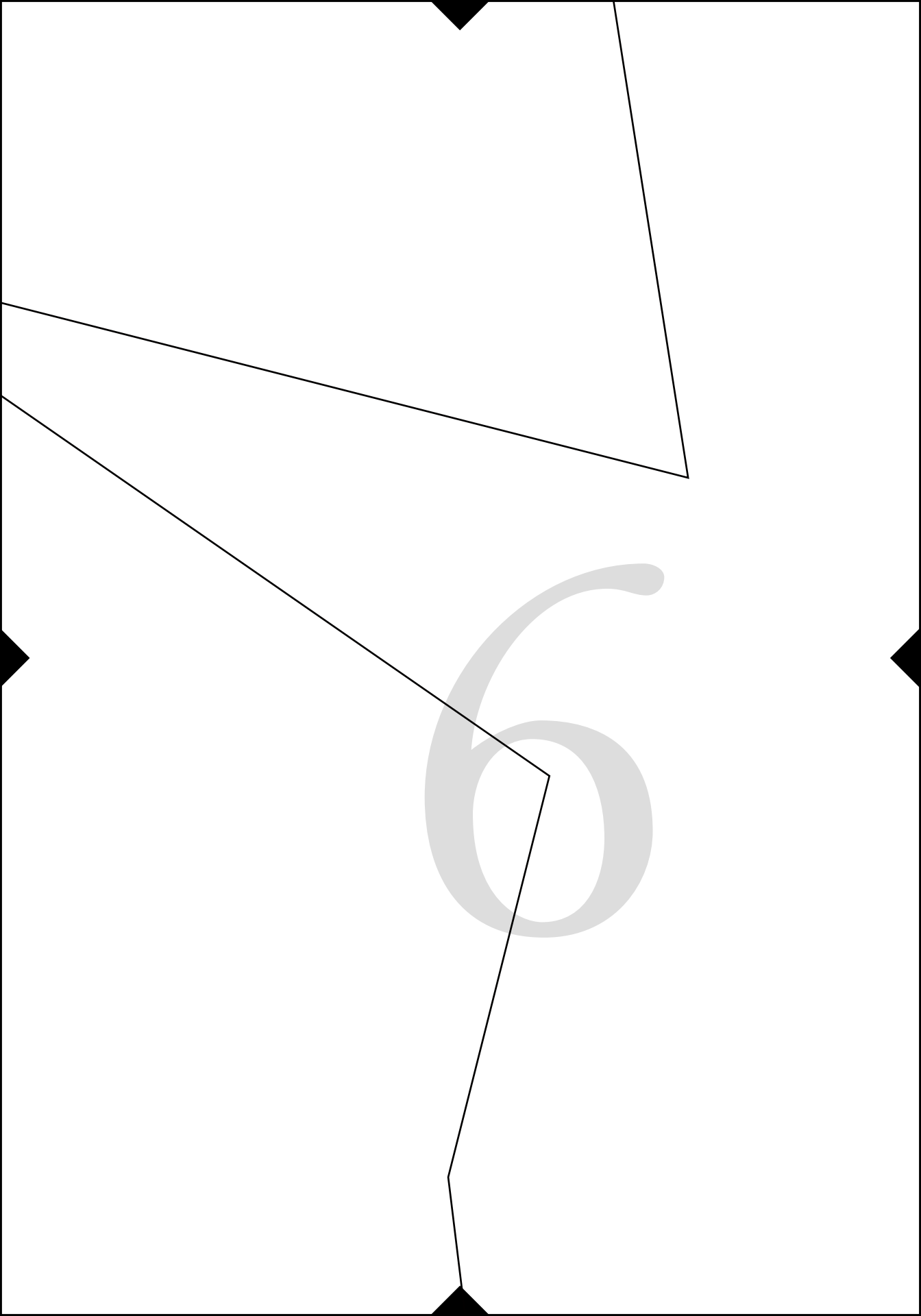
Size 38



4

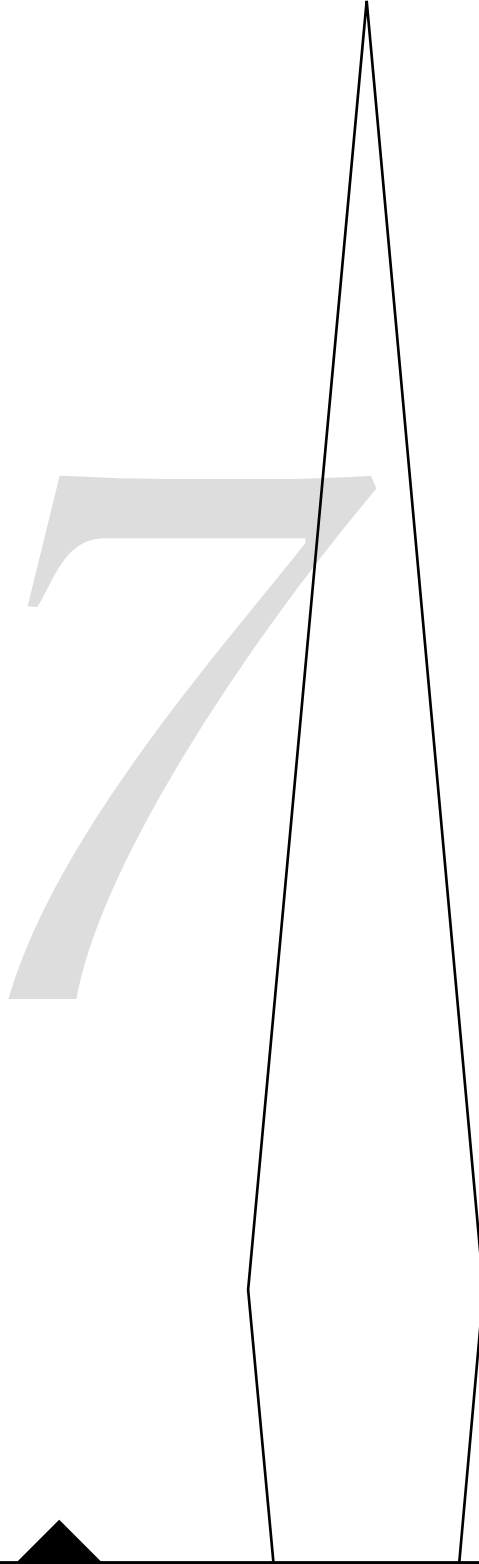
(has no seam allowances)





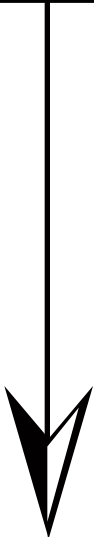
# Cut 2

(has no seam allowances)

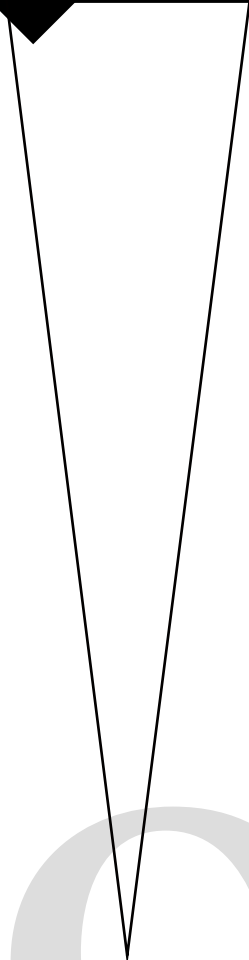


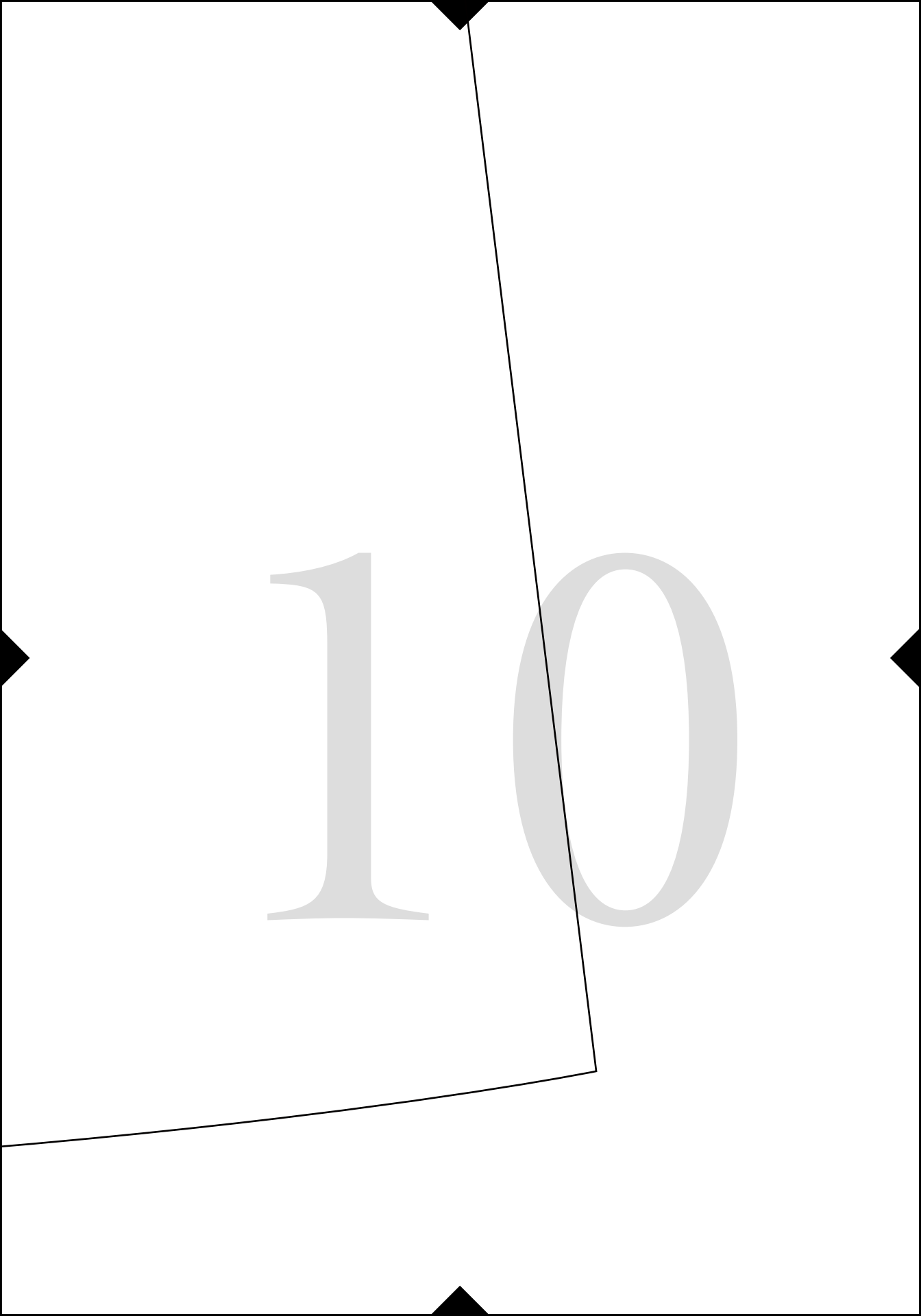
8





9





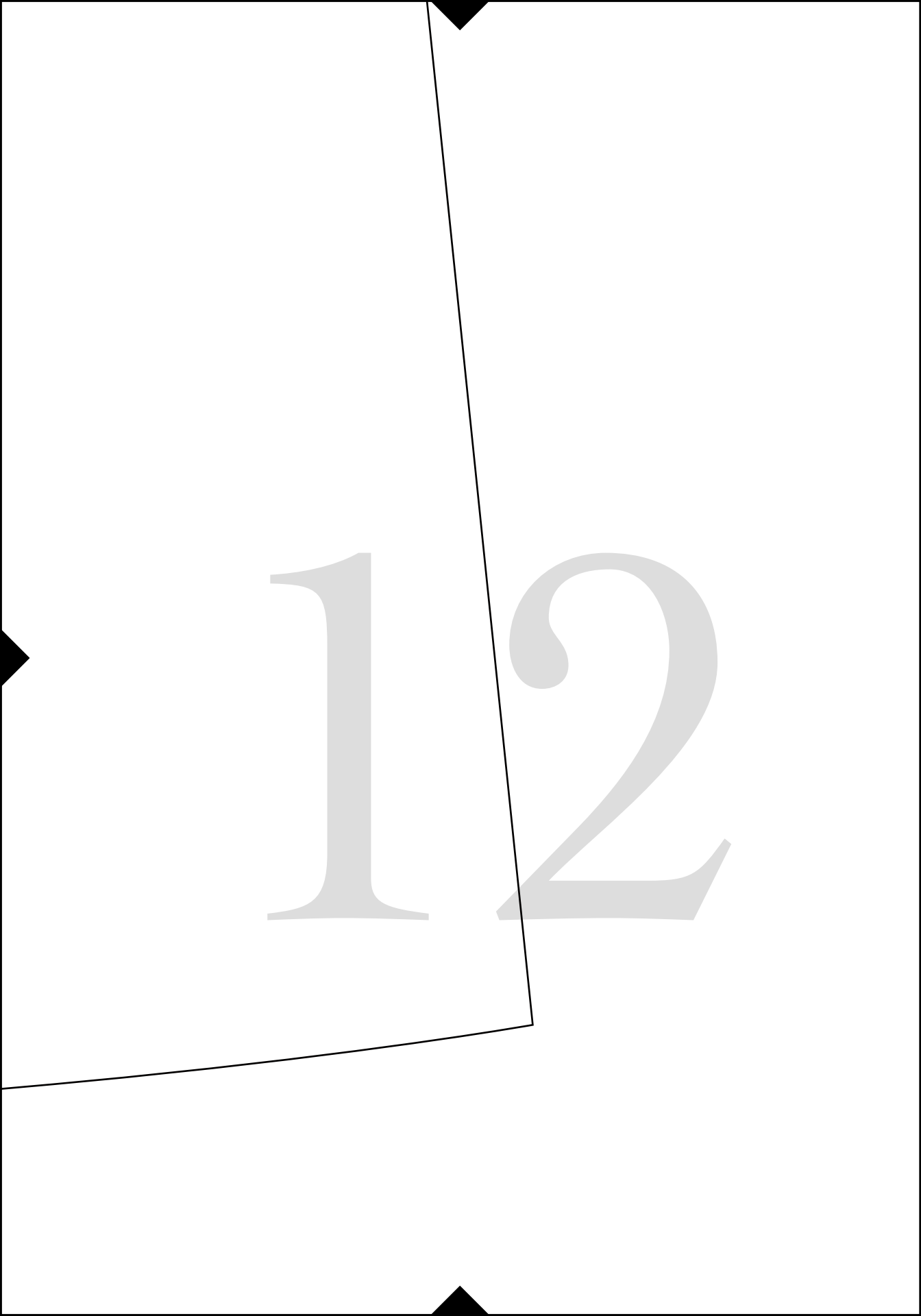
10



1

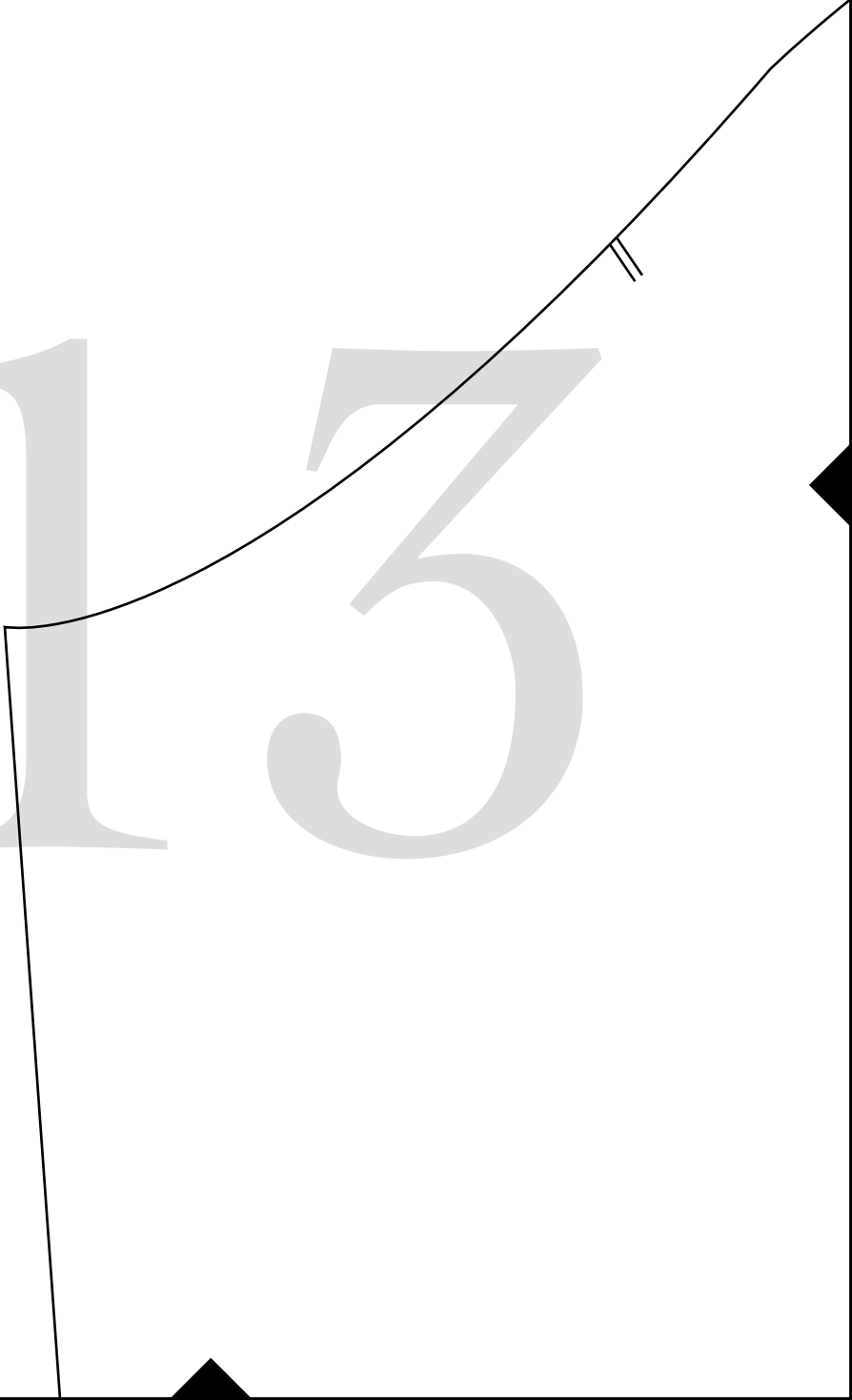
1





12

15

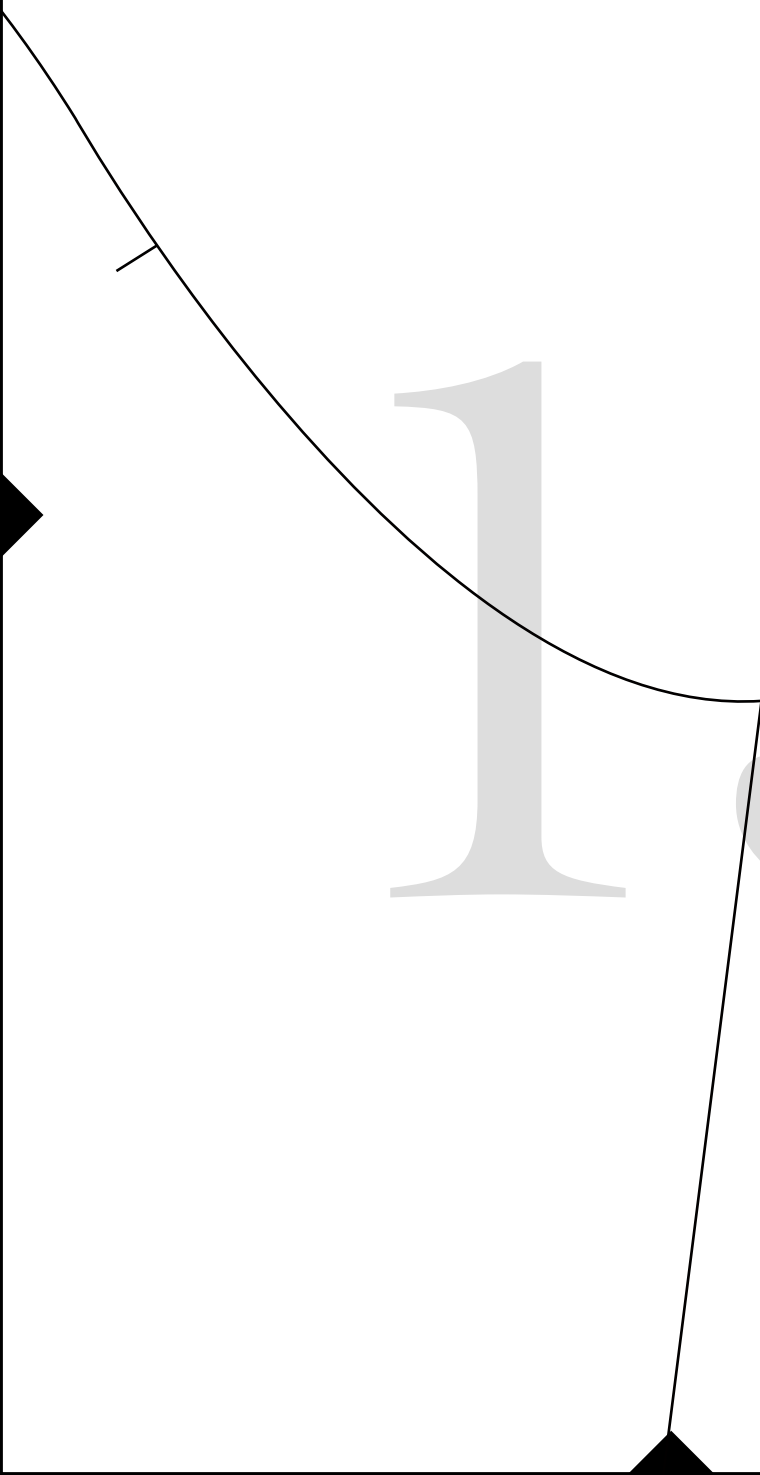




14

*Blue Hours Atelier*  
*No. 0001*  
Bodice Sloper

15



# 16



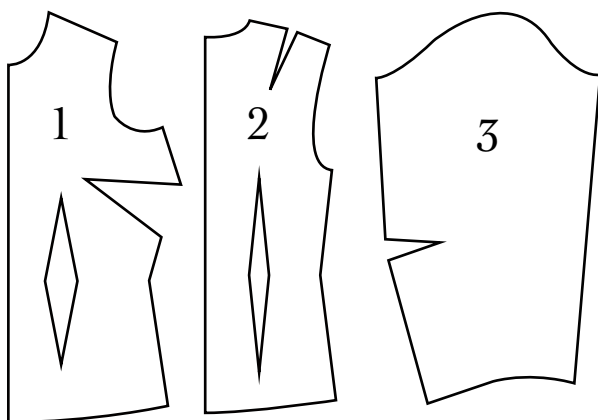
*BH No. 0001*

Women's Bodice Sloper for Nonstretch Fabrics

Includes three pieces, 1) bodice front, 2) bodice back, 3) sleeve.

For bodice front, choose variation with desired cup size.

Sloper pieces have no seam allowances.



*Test Square*

3 inches x 3 inches



17

SLEEVE

Size 38

Cut 2

(has no seam allowances)

18



19

20

21

22