

Blue Hours Atelier
No. 0001
Bodice Sloper

FRONT

Size 40
(C Cup)

Cut 2

2



3

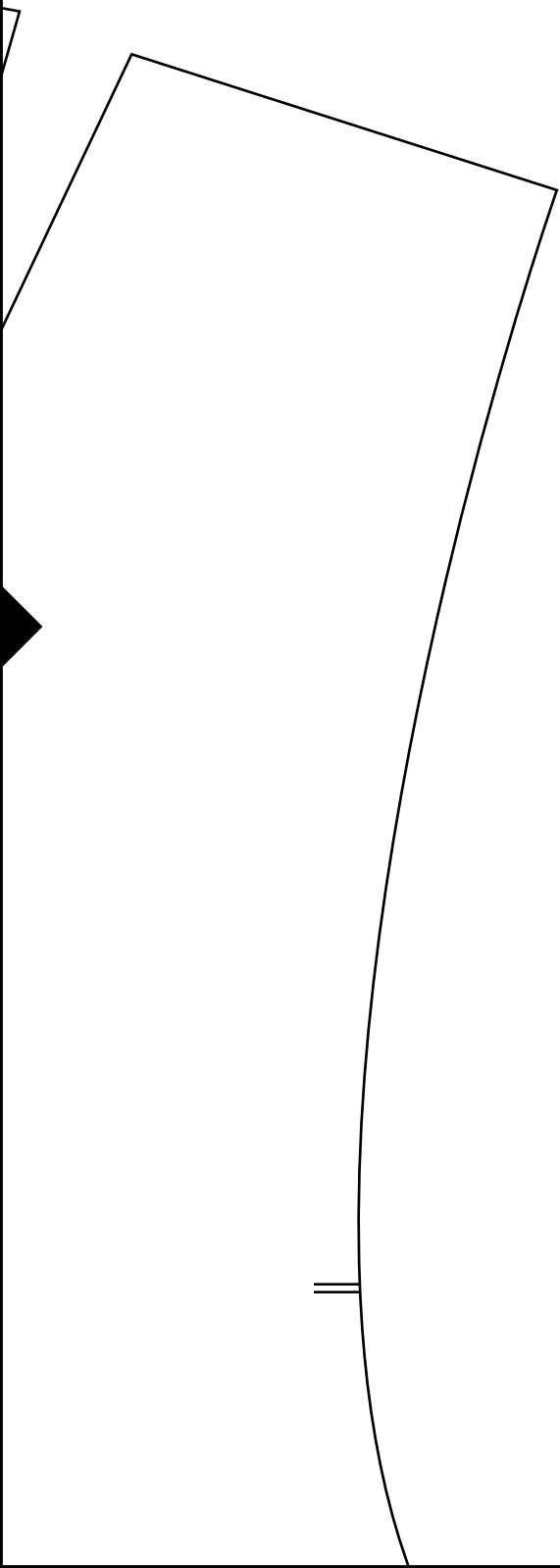
Blue Hours Atelier

No. 0001

Bodice Sloper

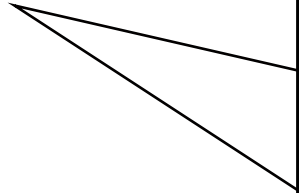
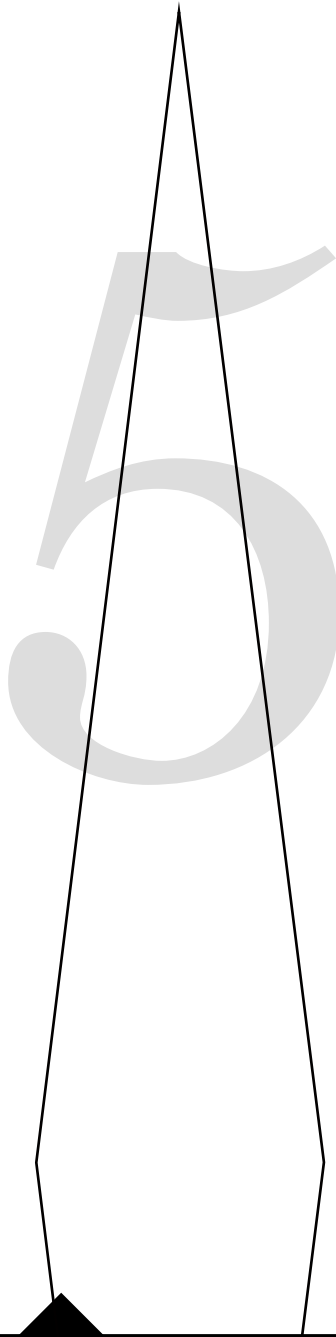
BACK

Size 40



4

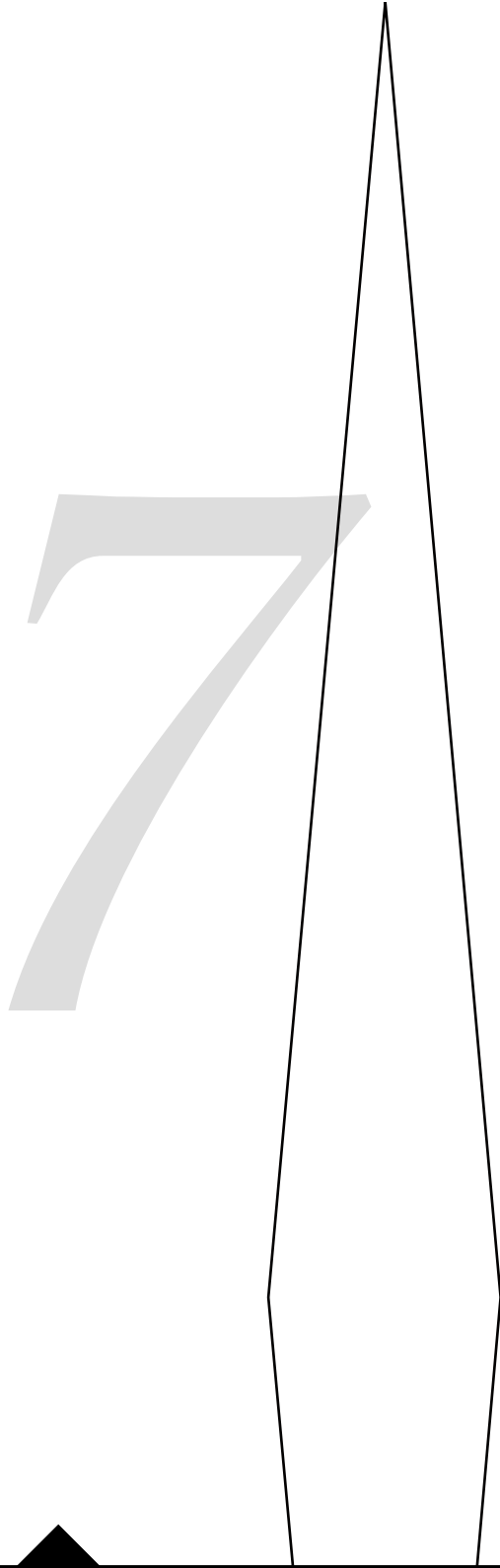
(has no seam allowances)



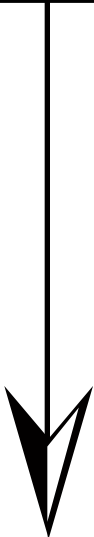
6

Cut 2

(has no seam allowances)



8



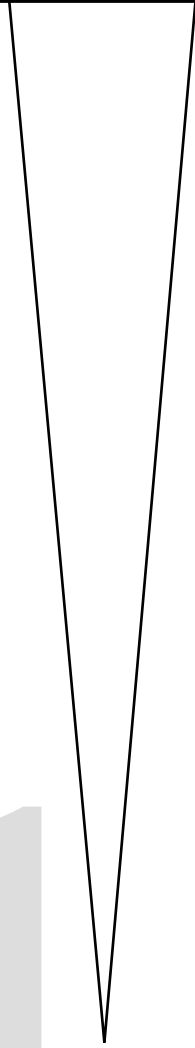
9

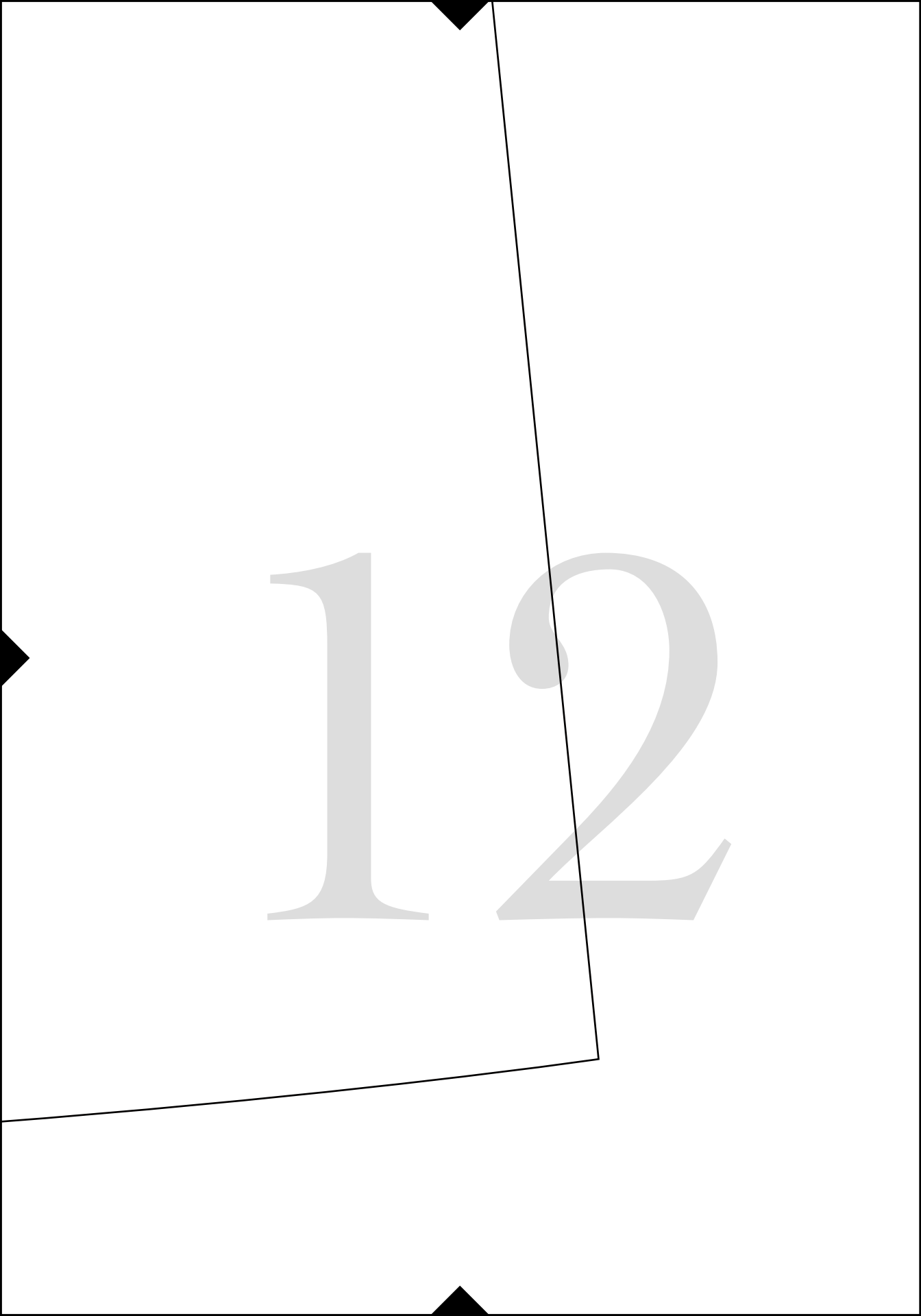
10



1

1





12

15

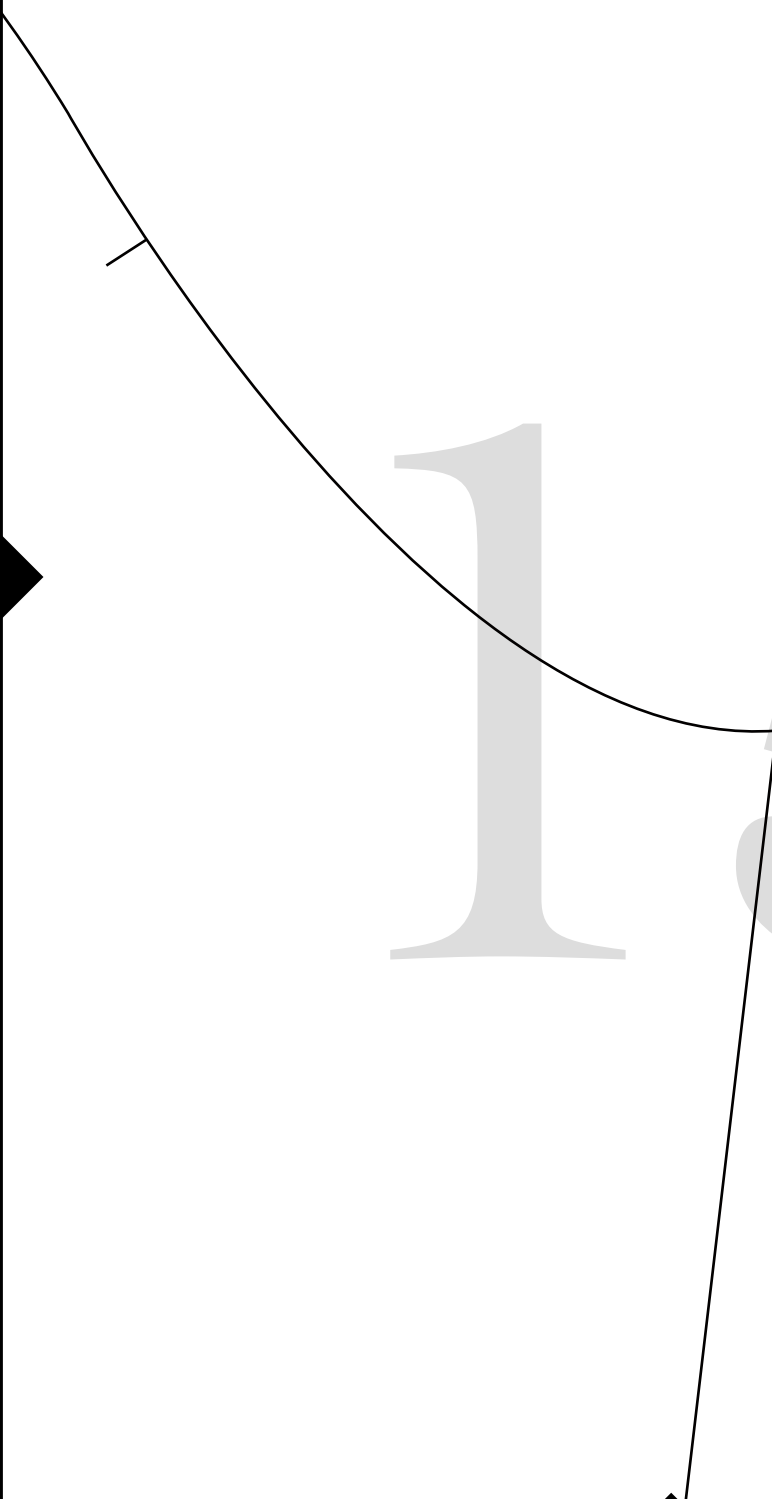




14

Blue Hours Atelier
No. 0001
Bodice Sloper

15



16



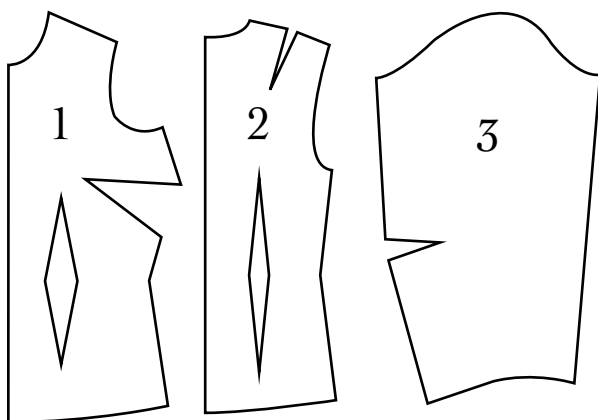
BH No. 0001

Women's Bodice Sloper for Nonstretch Fabrics

Includes three pieces, 1) bodice front, 2) bodice back, 3) sleeve.

For bodice front, choose variation with desired cup size.

Sloper pieces have no seam allowances.



Test Square

3 inches x 3 inches

17

SLEEVE

Size 40

Cut 2

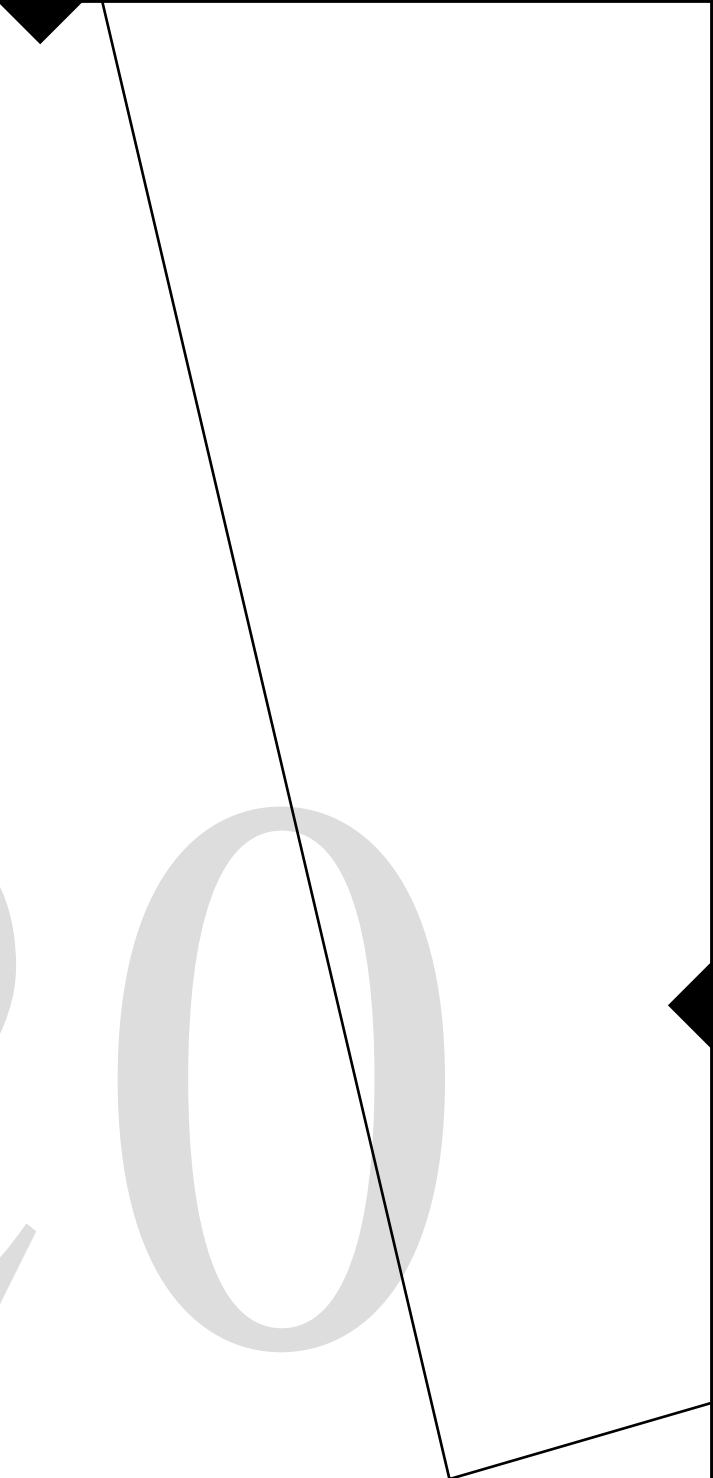
(has no seam allowances)

18



19

20



21

22