

*Blue Hours Atelier*

*No. 0001*

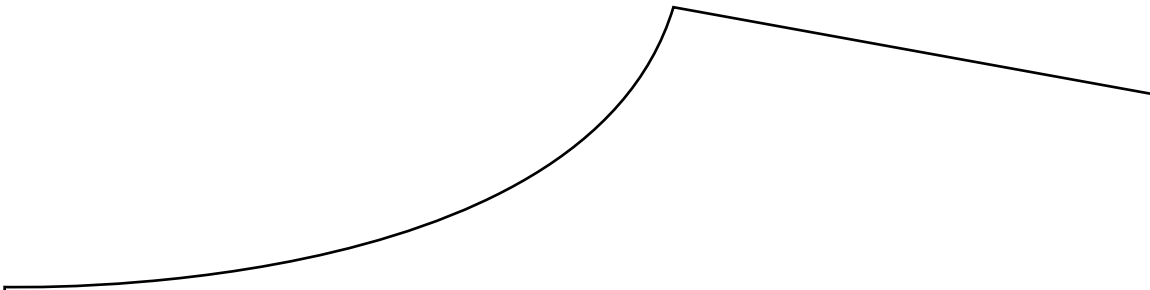
Bodice Sloper

FRONT

Size 42  
(B Cup)

Cut 2

2



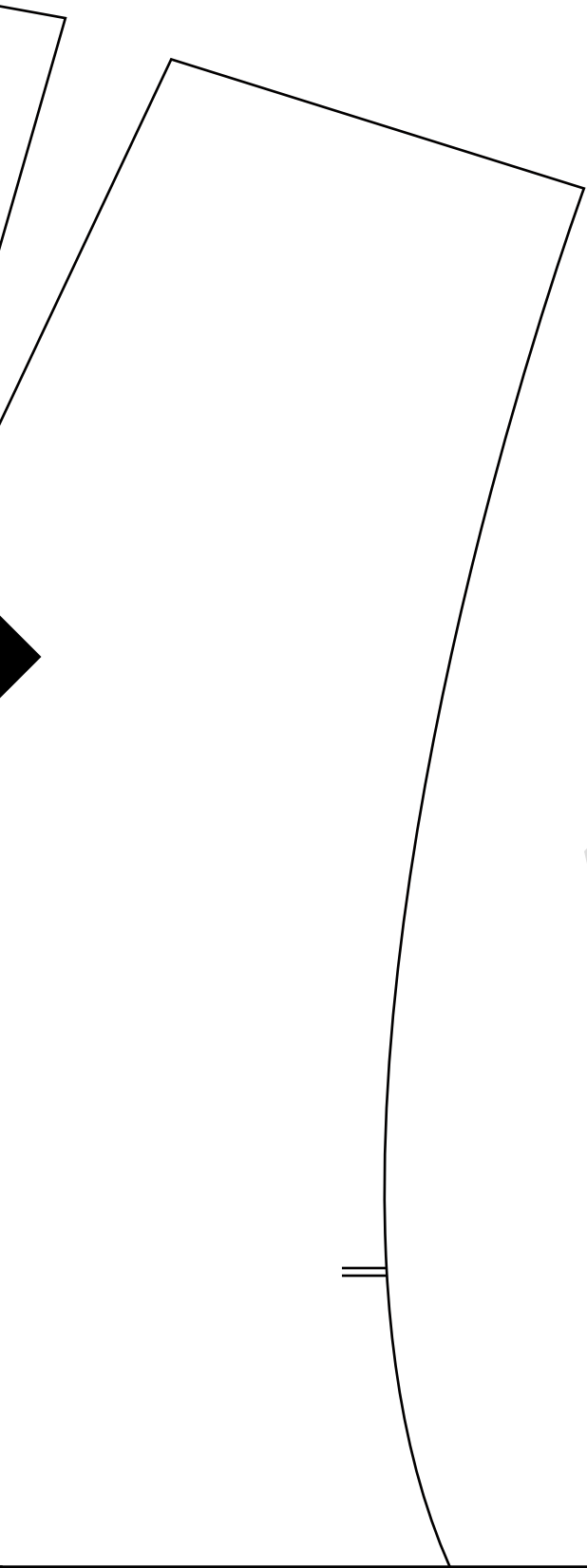
*Blue Hours Atelier*

*No. 0001*

Bodice Sloper

BACK

Size 42

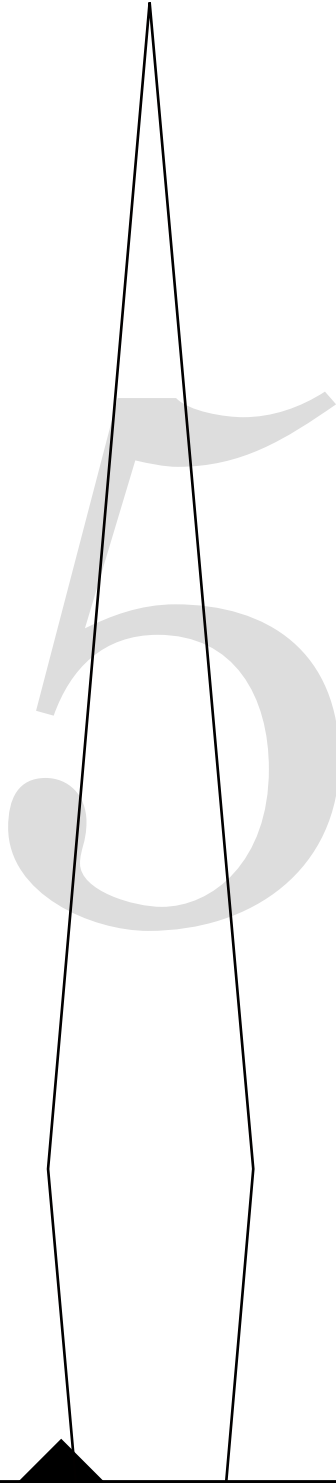
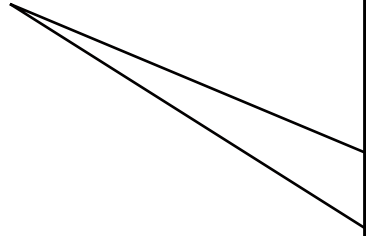


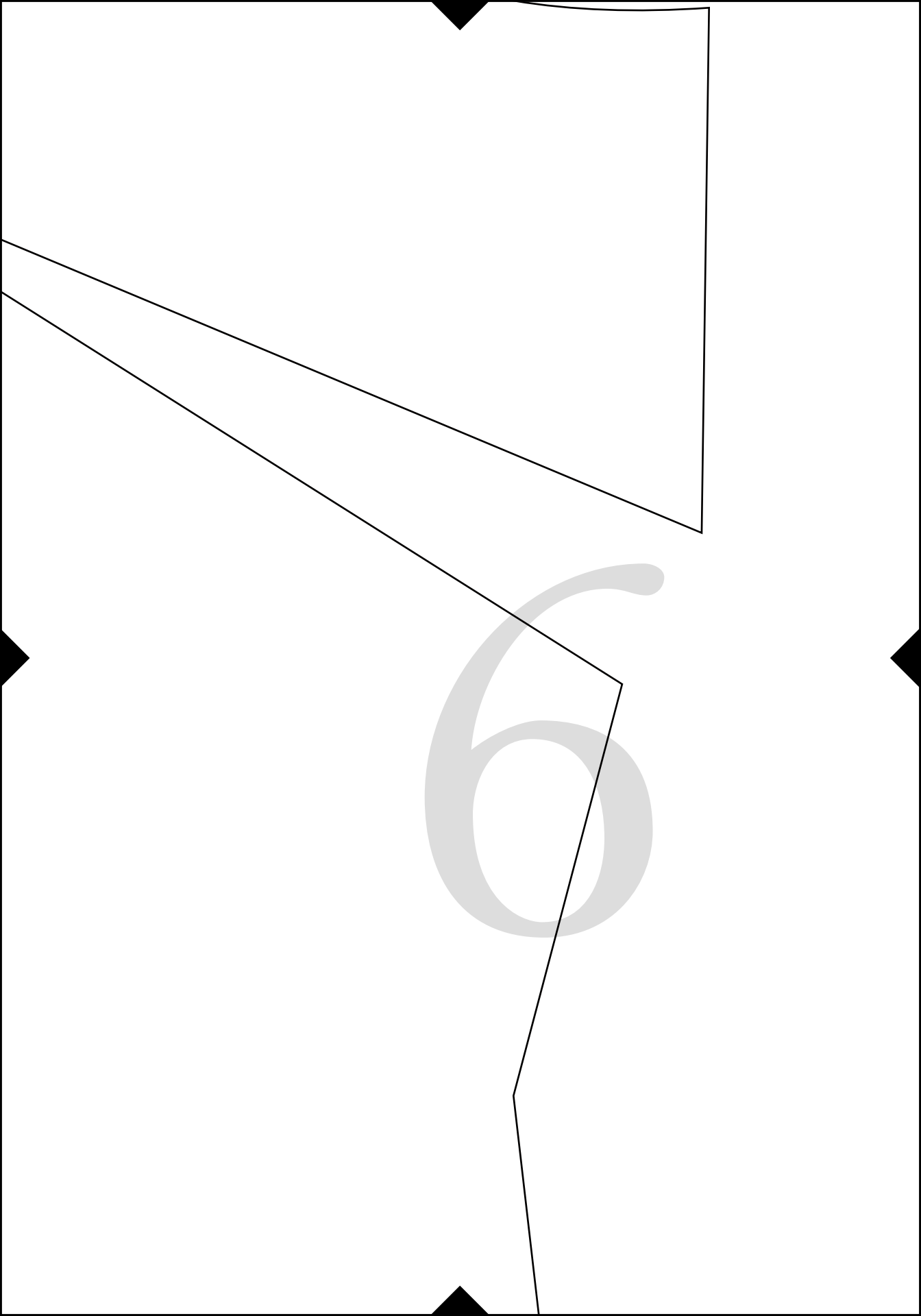
4

==



(has no seam allowances)

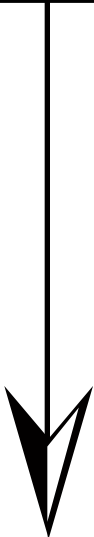




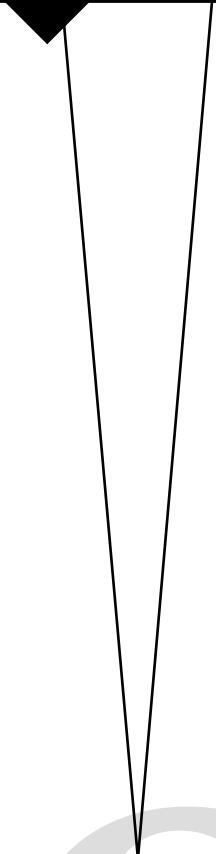


8





9



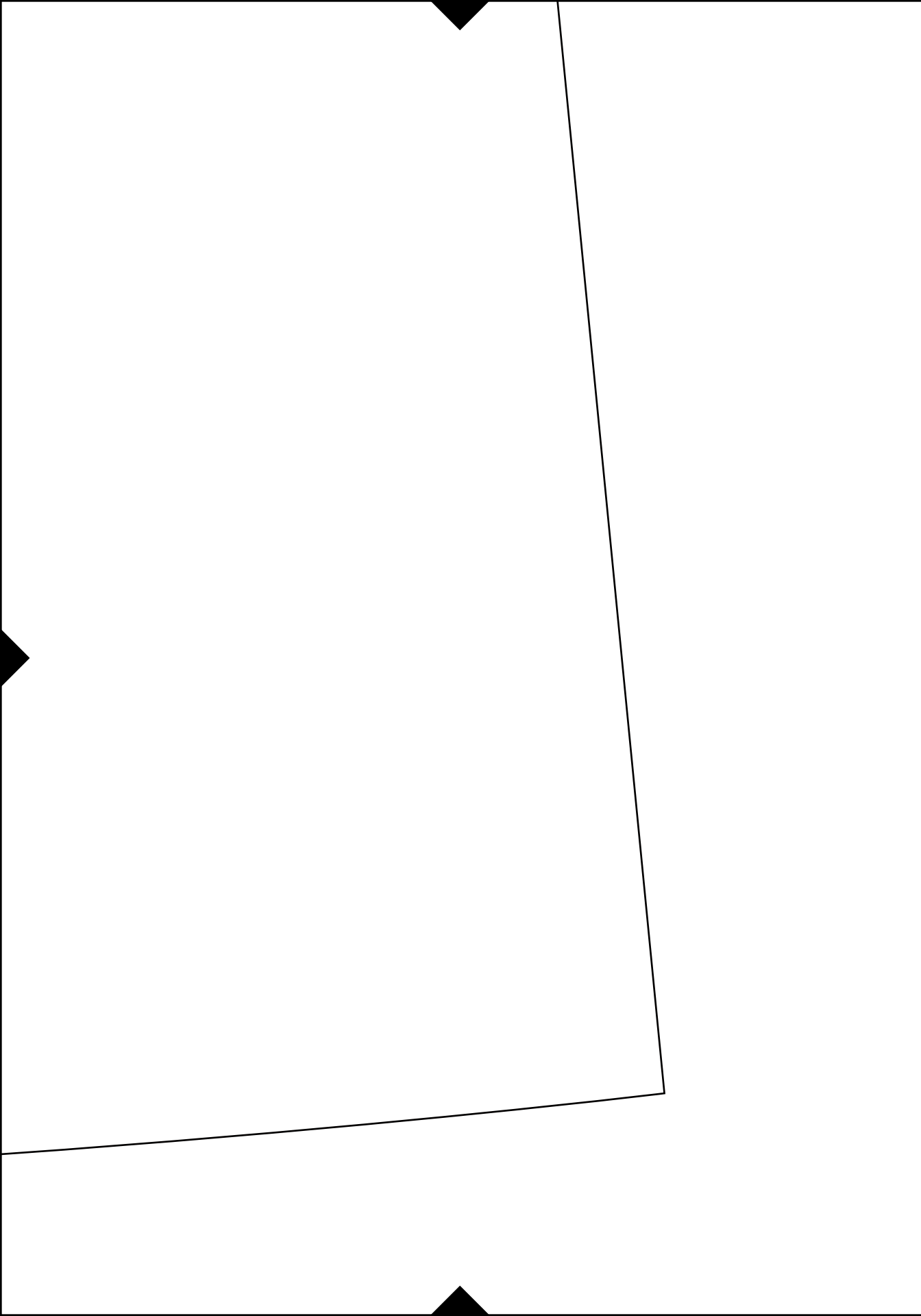
10



1

1



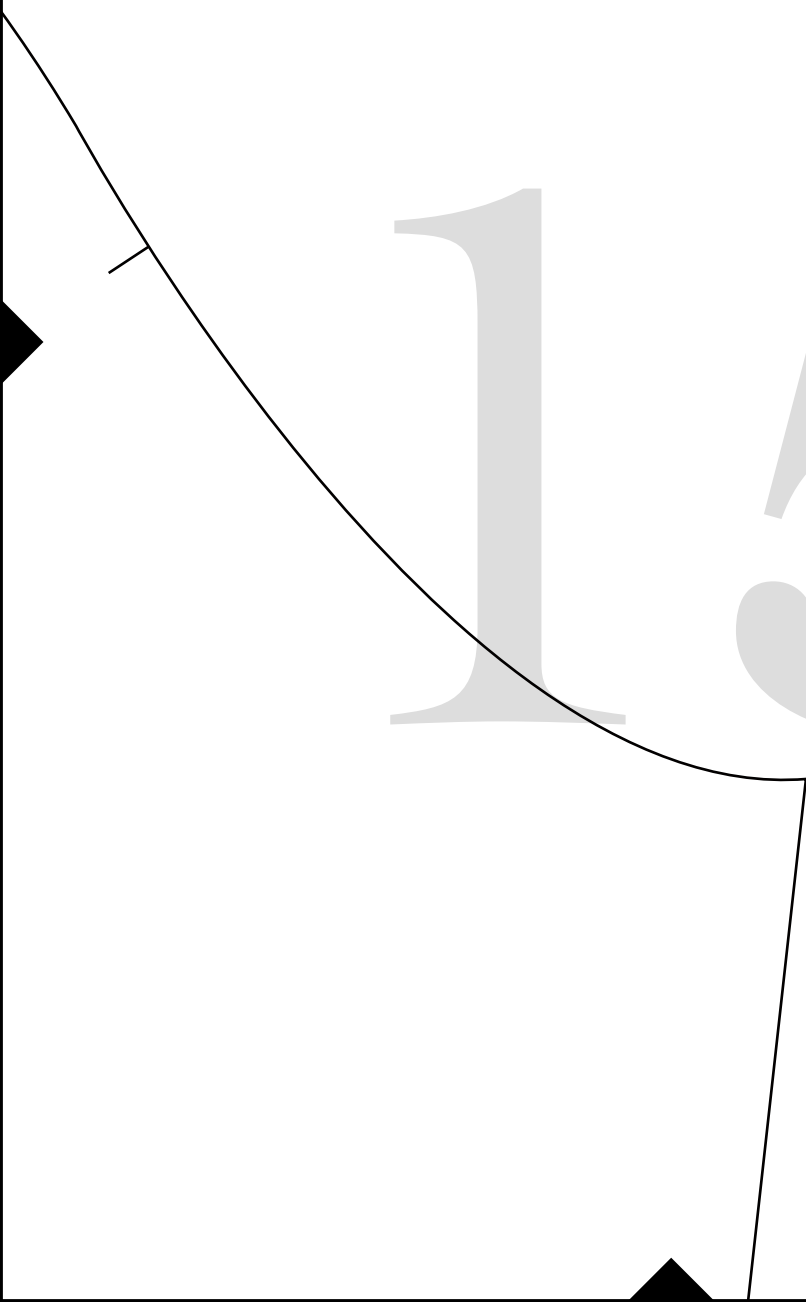


13

14



15



# 16



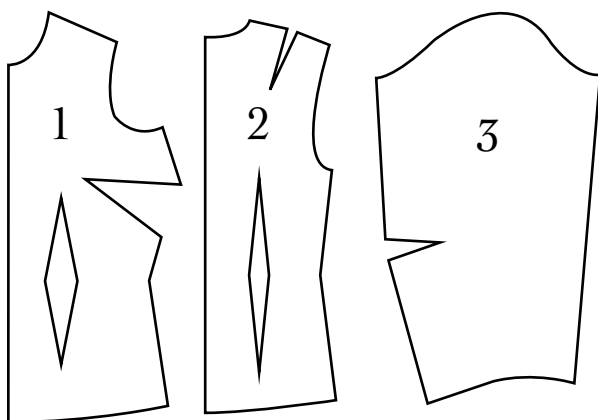
*BH No. 0001*

Women's Bodice Sloper for Nonstretch Fabrics

Includes three pieces, 1) bodice front, 2) bodice back, 3) sleeve.

For bodice front, choose variation with desired cup size.

Sloper pieces have no seam allowances.



*Test Square*

3 inches x 3 inches



17

*Blue Hours Atelier*

*No. 0001*

Bodice Sloper

SLEEVE

Size 42

Cut 2

(has no seam allowances)

18

19

20

21

22