

*Blue Hours Atelier*

*No. 0001*

Bodice Sloper

FRONT

Size 44  
(C Cup)

Cut 2

2



3

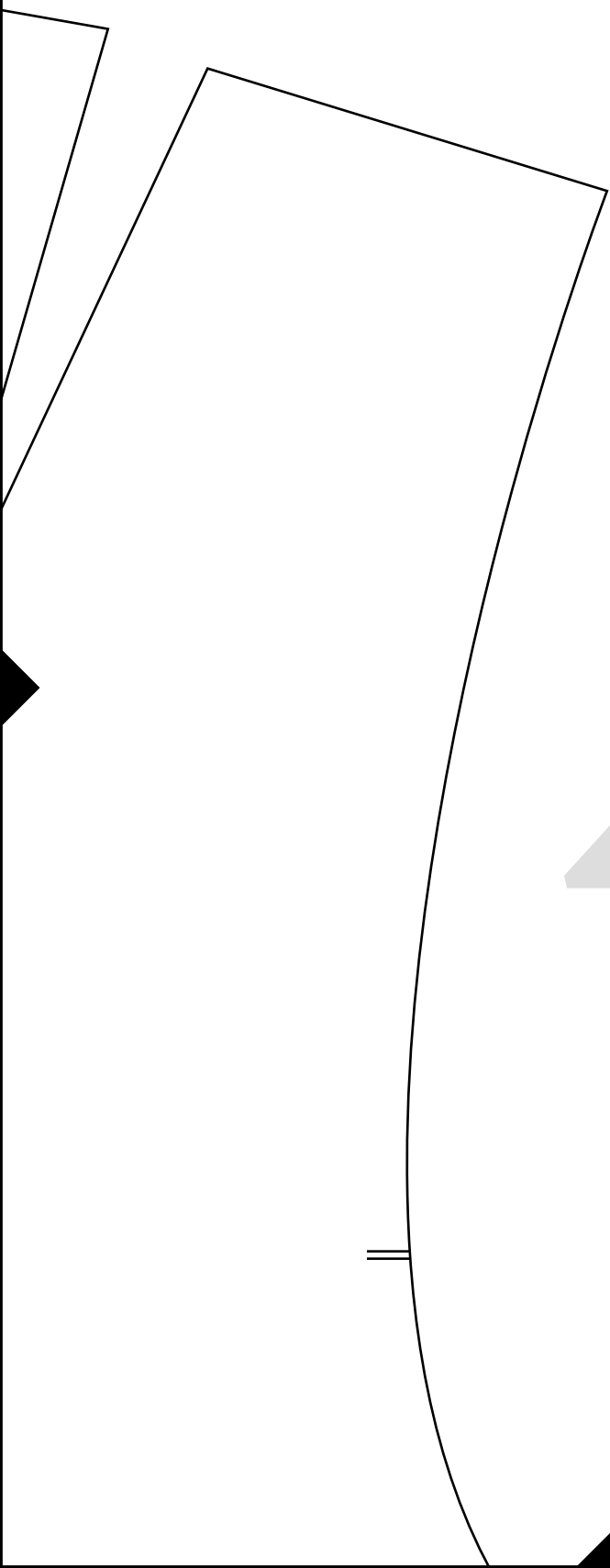
*Blue Hours Atelier*

*No. 0001*

Bodice Sloper

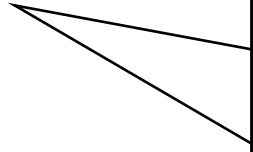
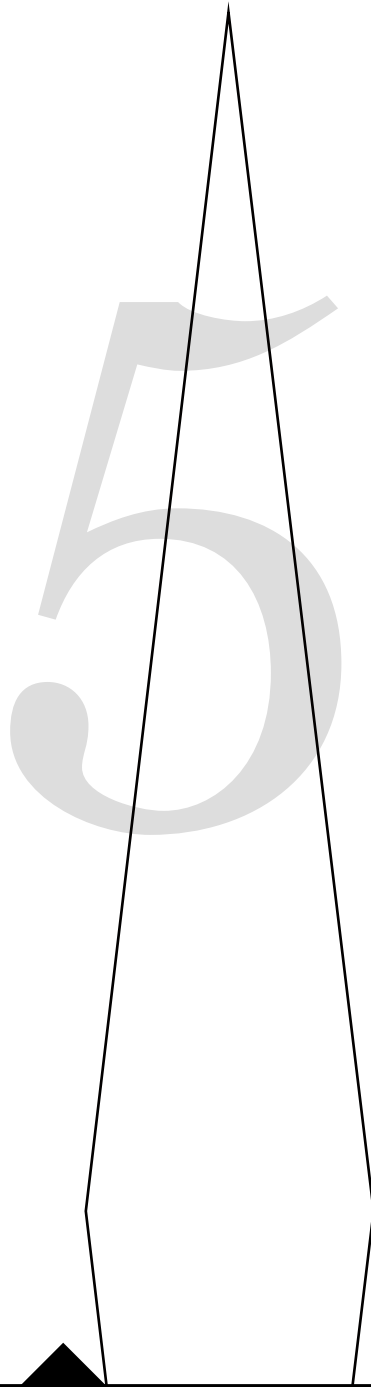
BACK

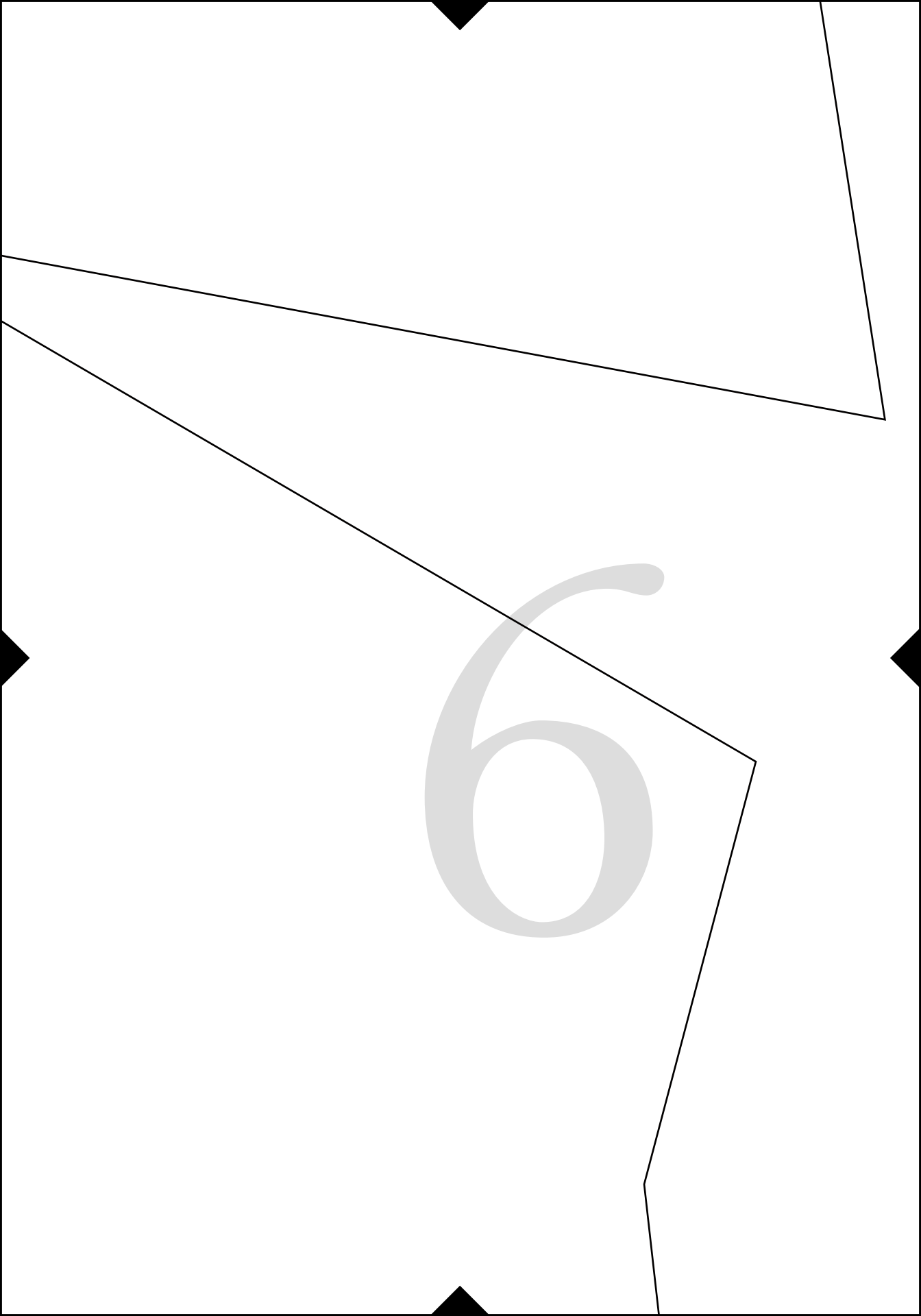
Size 44



4

(has no seam allowances)

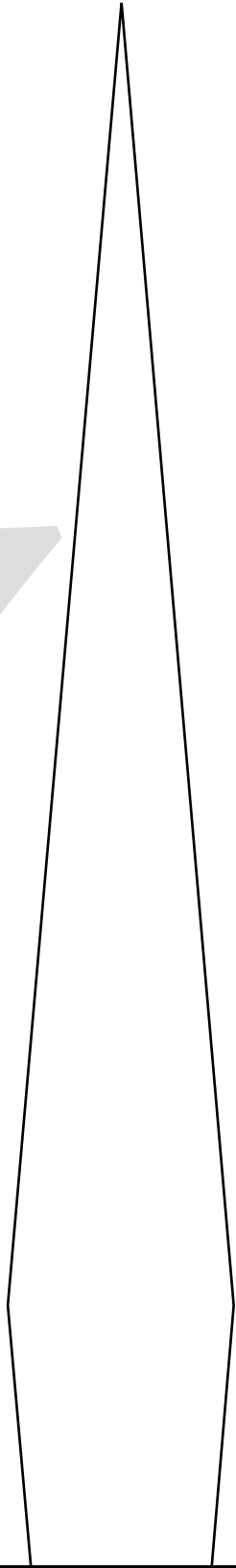




6

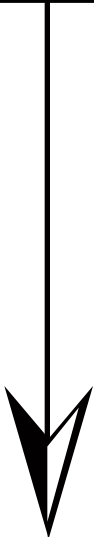
# Cut 2

(has no seam allowances)

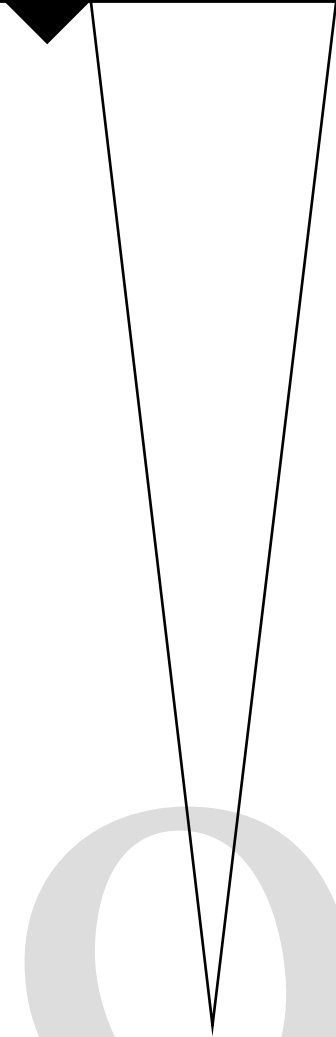


8





9



10



1

1



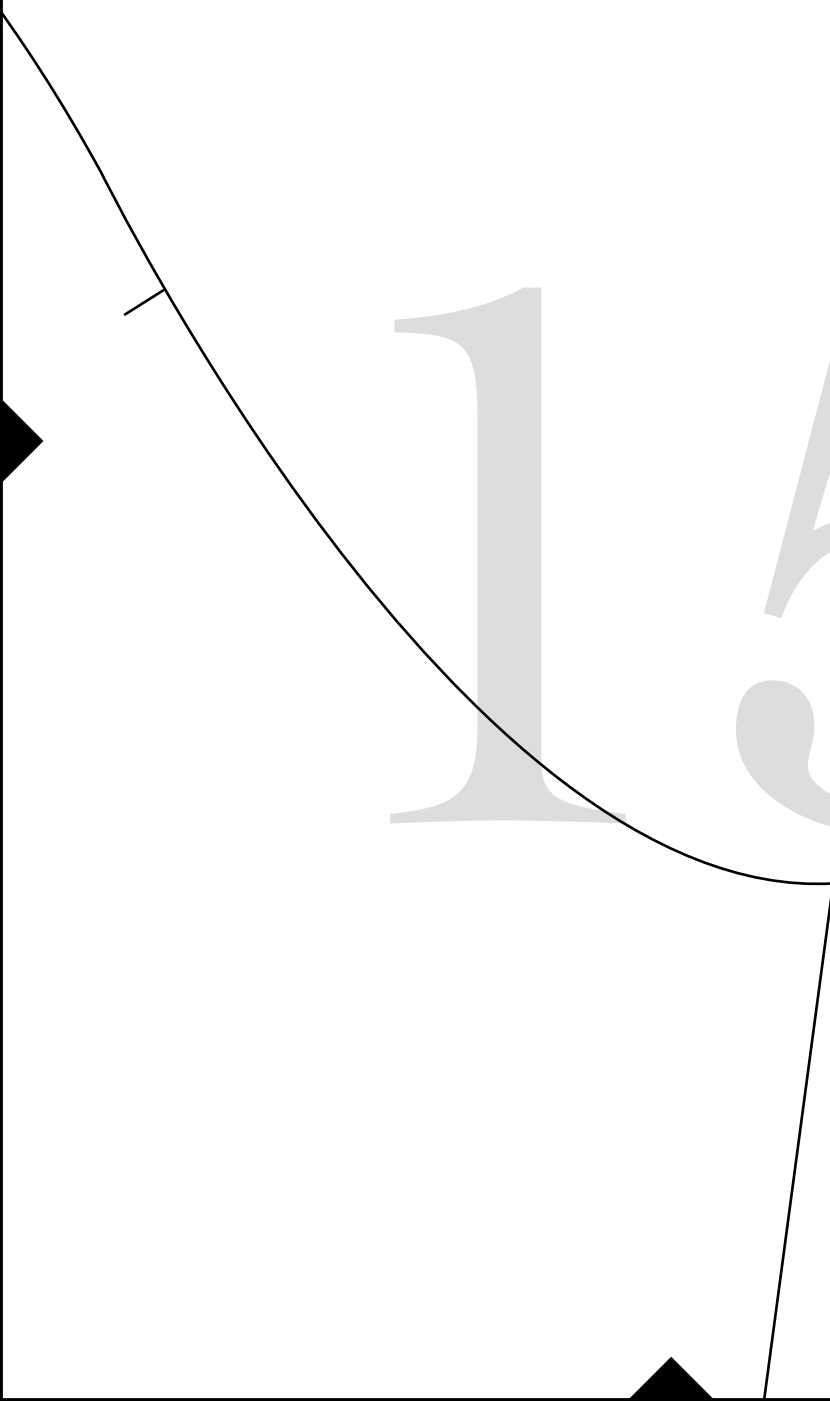
12

15

14



15



# 16



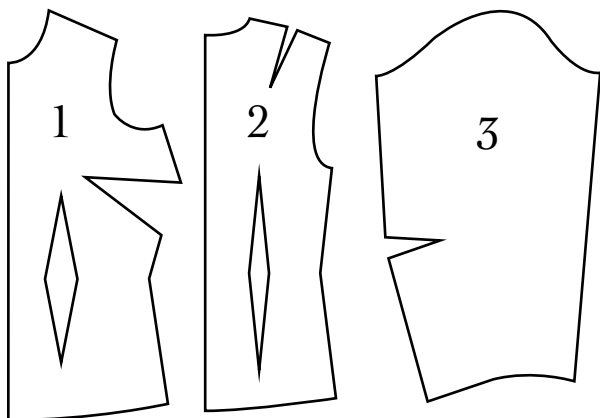
*BH No. 0001*

Women's Bodice Sloper for Nonstretch Fabrics

Includes three pieces, 1) bodice front, 2) bodice back, 3) sleeve.

For bodice front, choose variation with desired cup size.

Sloper pieces have no seam allowances.



*Test Square*

3 inches x 3 inches



17

*Blue Hours Atelier*

*No. 0001*

Bodice Sloper

SLEEVE

Size 44

Cut 2

(has no seam allowances)

18

19

20

21

22