

Blue Hours Atelier

No. 0001

Bodice Sloper

FRONT

Size 46
(C Cup)

Cut 2

2



3

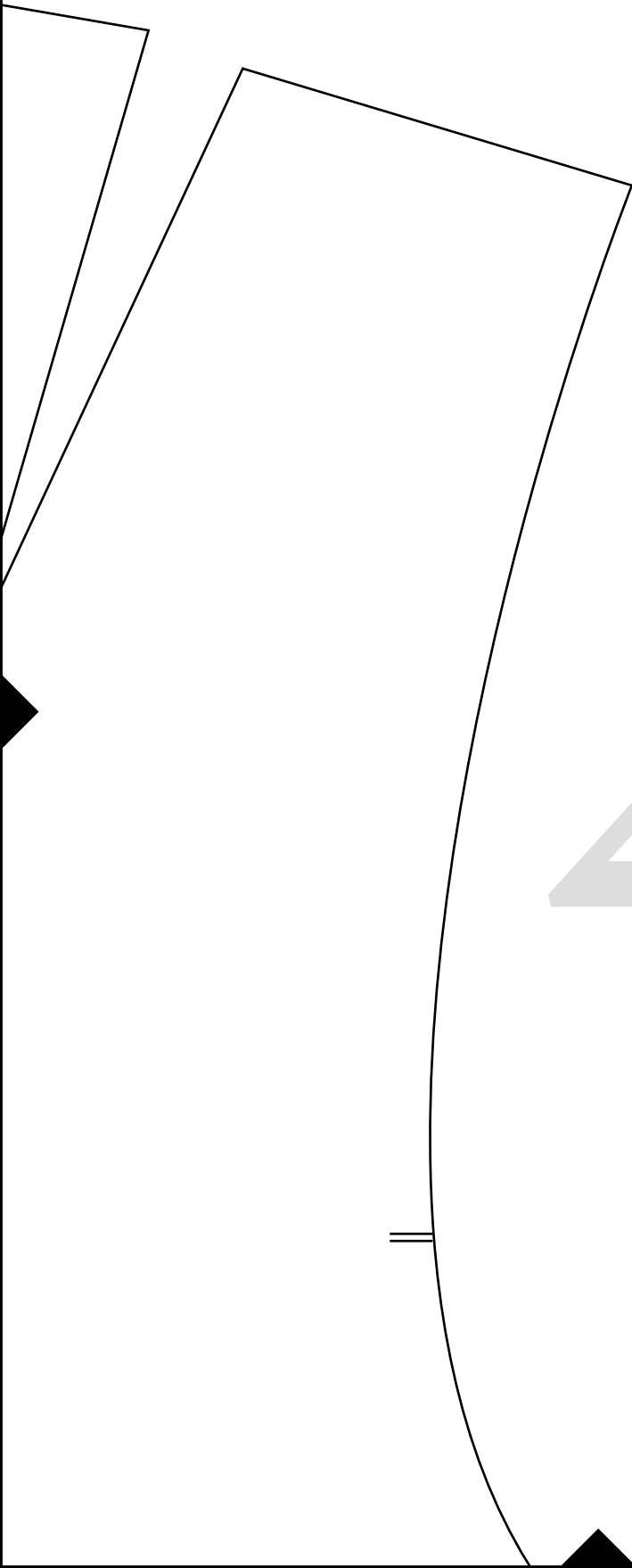
Blue Hours Atelier

No. 0001

Bodice Sloper

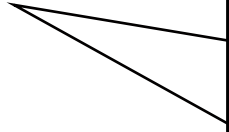
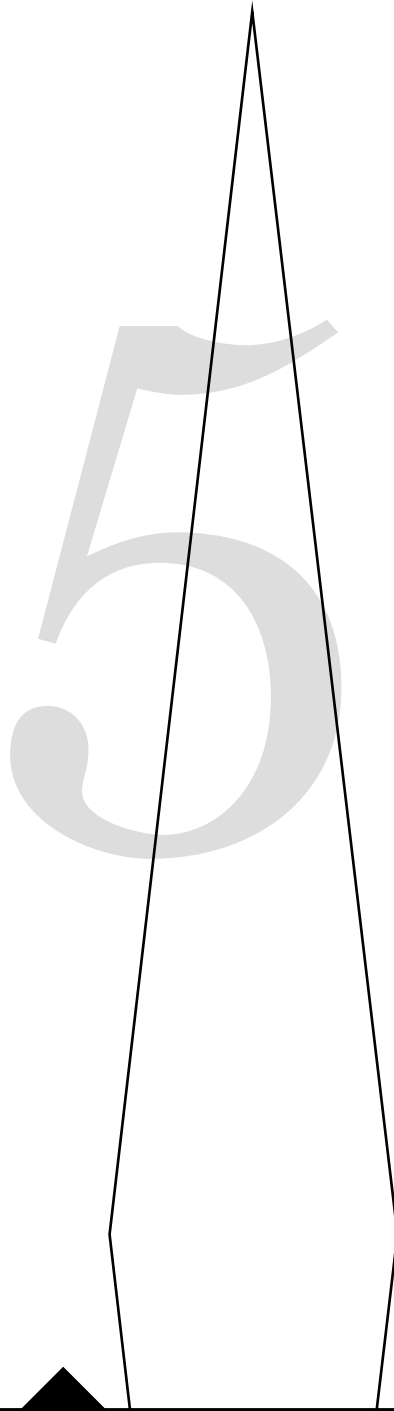
BACK

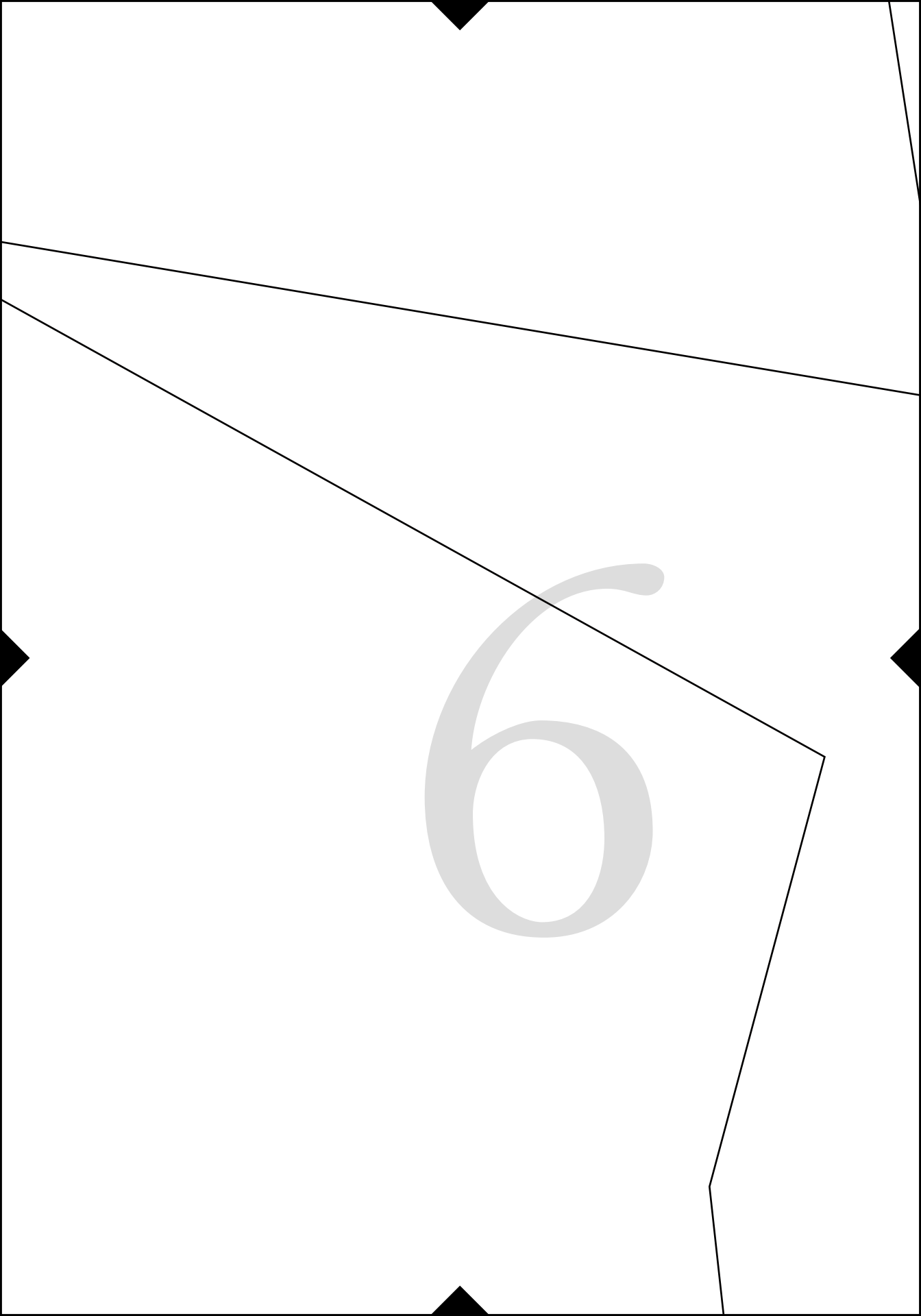
Size 46



4

(has no seam allowances)

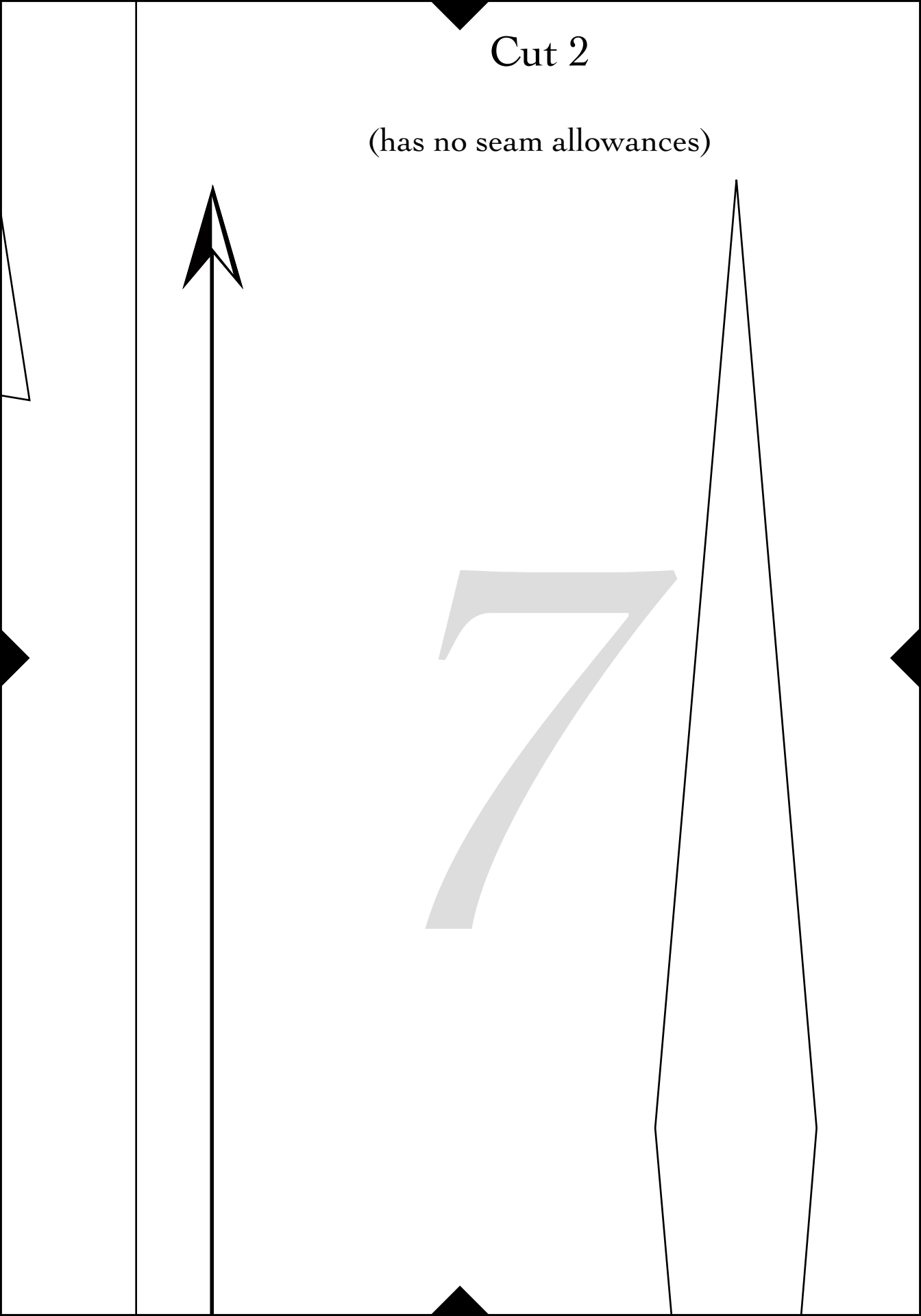




6

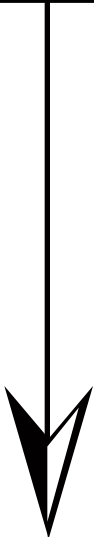
Cut 2

(has no seam allowances)

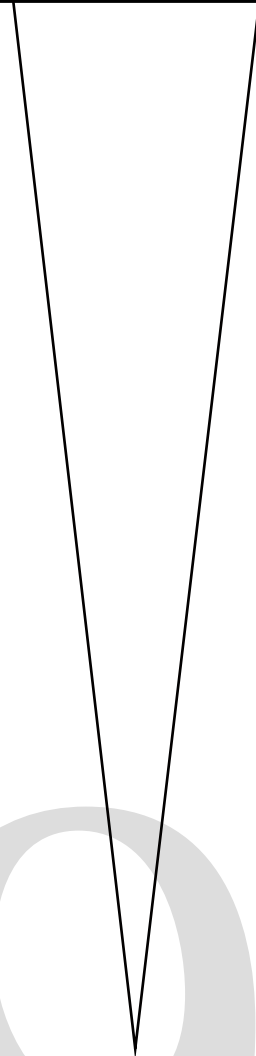




8



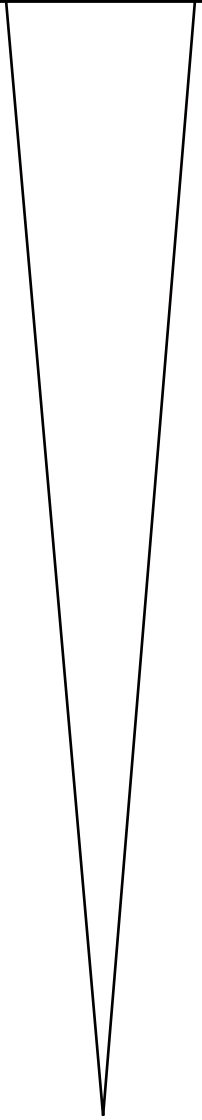
9



10



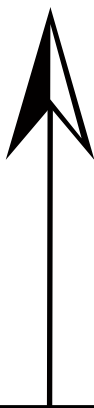
11



12

15

14



15

16



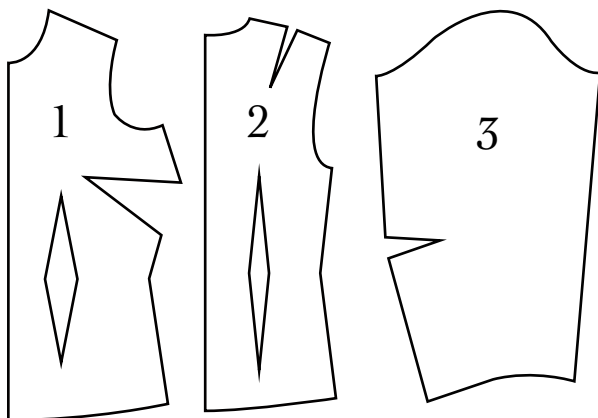
BH No. 0001

Women's Bodice Sloper for Nonstretch Fabrics

Includes three pieces, 1) bodice front, 2) bodice back, 3) sleeve.

For bodice front, choose variation with desired cup size.

Sloper pieces have no seam allowances.



Test Square

3 inches x 3 inches

17

Blue Hours Atelier

No. 0001

Bodice Sloper

SLEEVE

Size 46

Cut 2

(has no seam allowances)

18

19

20

21

22