

*Blue Hours Atelier*

*No. 0001*

Bodice Sloper

FRONT

Size 46  
(D Cup)

Cut 2



2



3

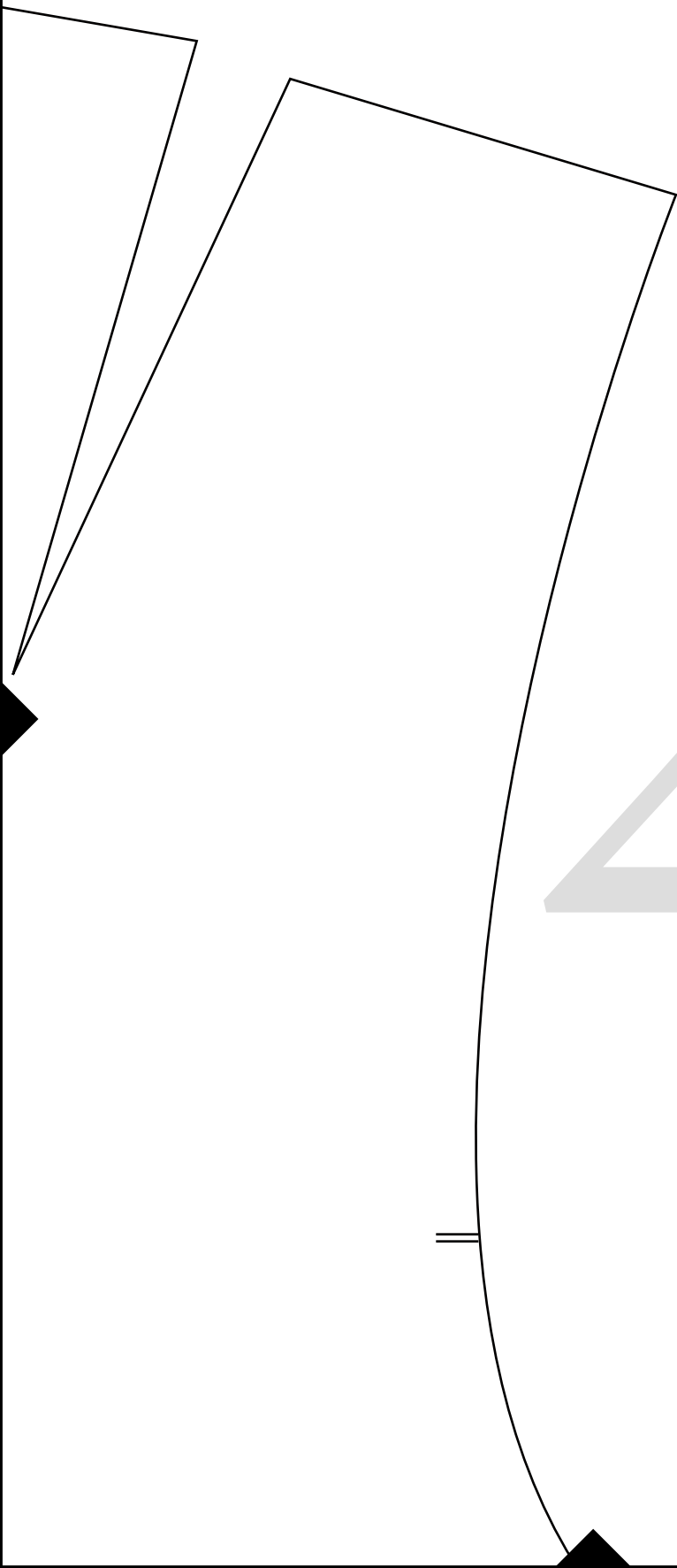
*Blue Hours Atelier*

*No. 0001*

Bodice Sloper

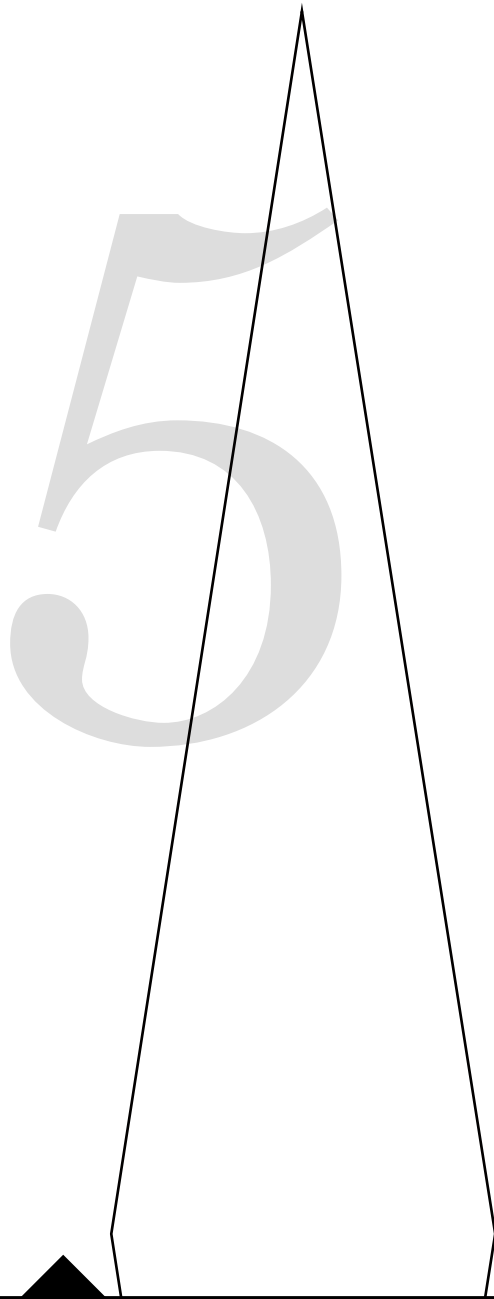
BACK

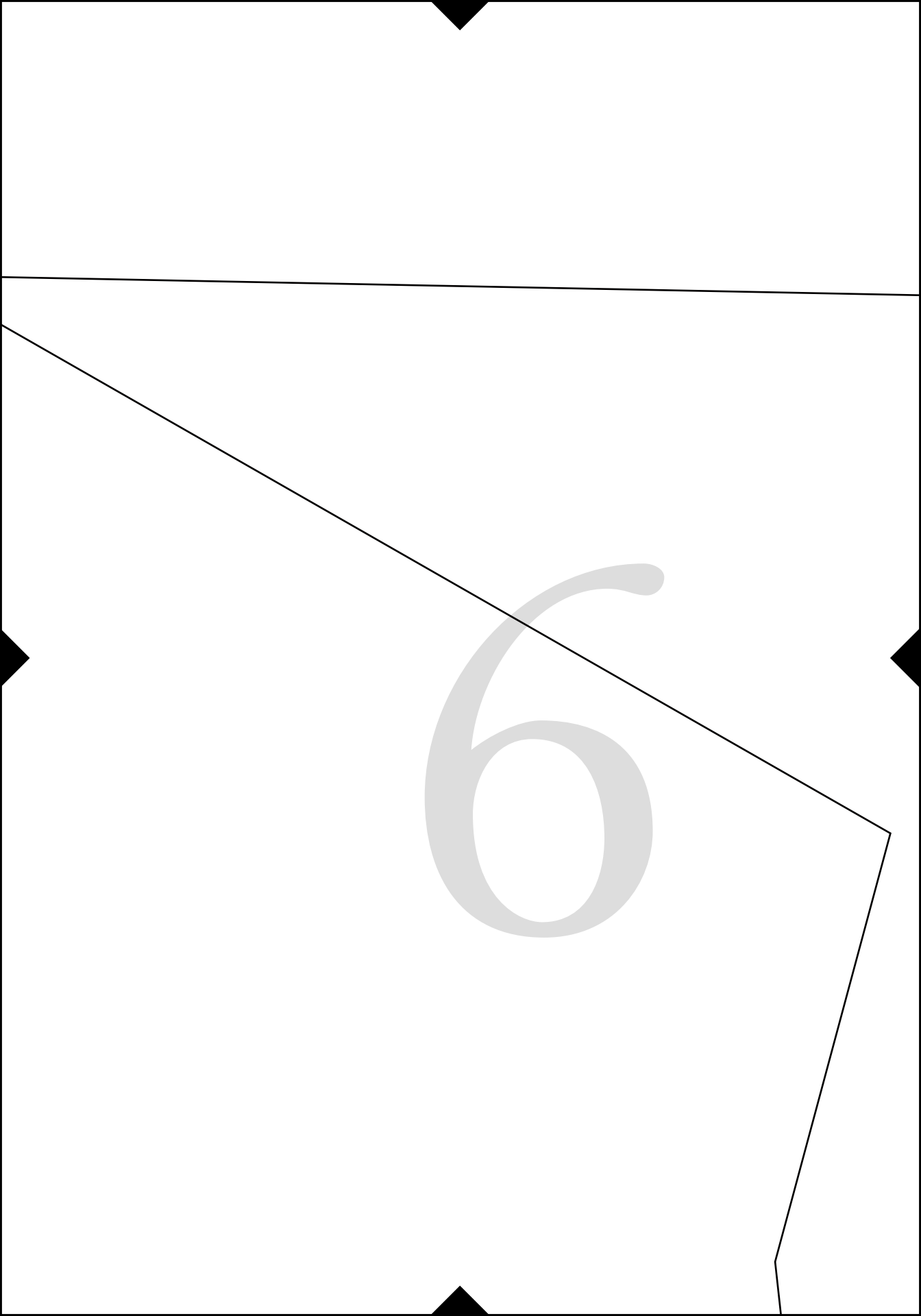
Size 46



4

(has no seam allowances)

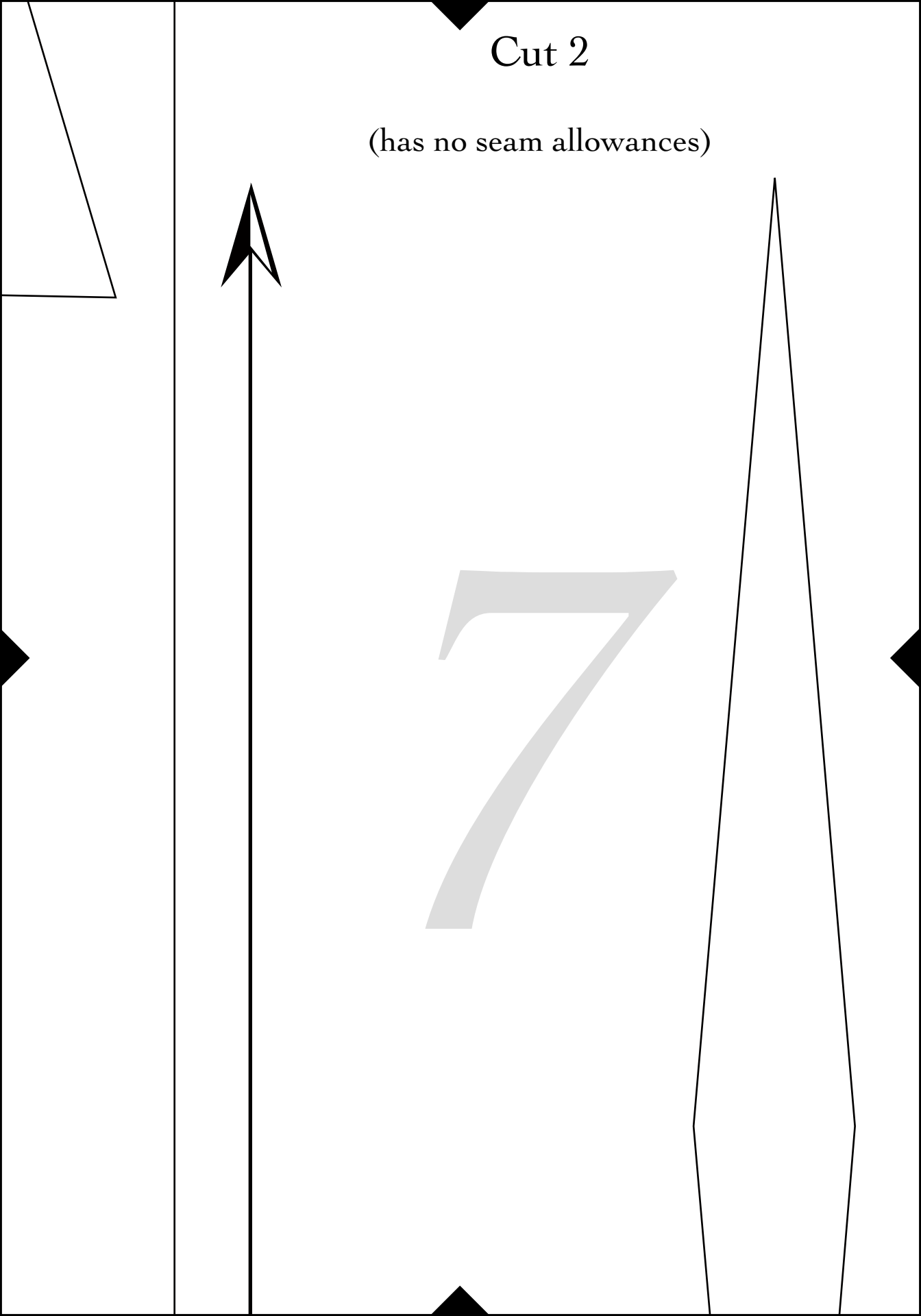




6

# Cut 2

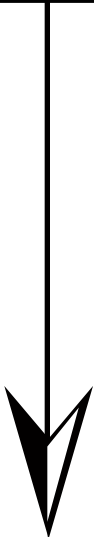
(has no seam allowances)



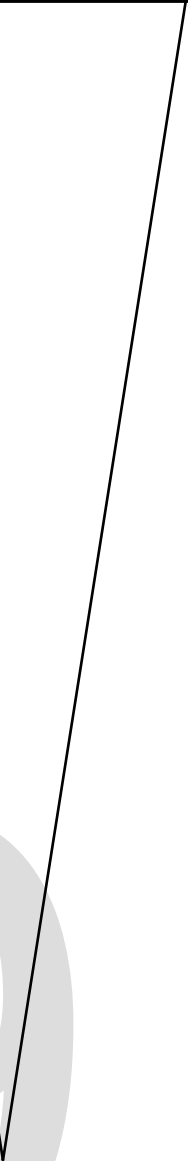
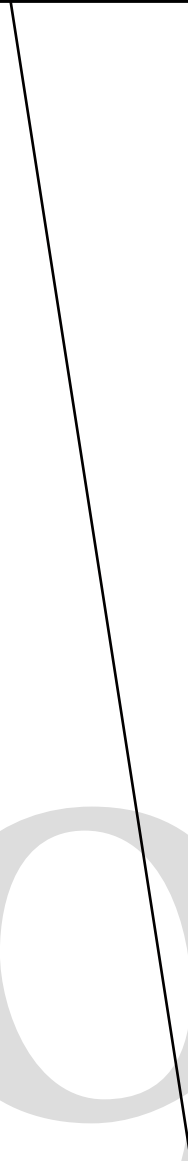


8





9

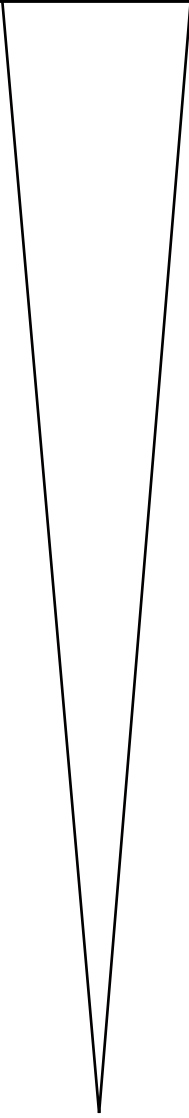


10



1

1

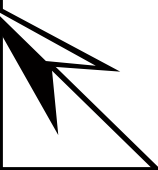


12

13

14

*Blue Hours Atelier*  
*No. 0001*  
*dice Sloper*



15

# 16



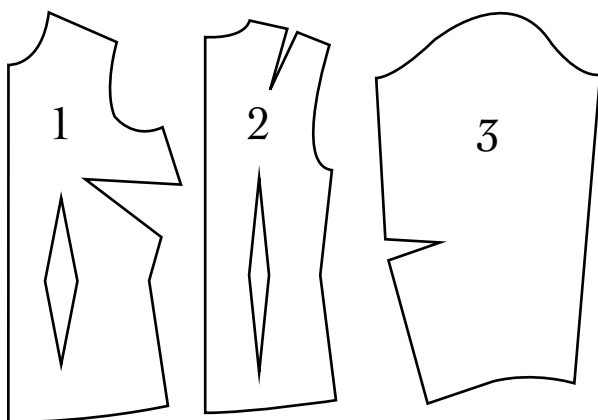
*BH No. 0001*

Women's Bodice Sloper for Nonstretch Fabrics

Includes three pieces, 1) bodice front, 2) bodice back, 3) sleeve.

For bodice front, choose variation with desired cup size.

Sloper pieces have no seam allowances.



*Test Square*

3 inches x 3 inches



17

SLEEVE

Size 46

Cut 2

(has no seam allowance)

18

ices)

19



20



21

22



23