

*Blue Hours Atelier*

*No. 0001*

Bodice Sloper

FRONT

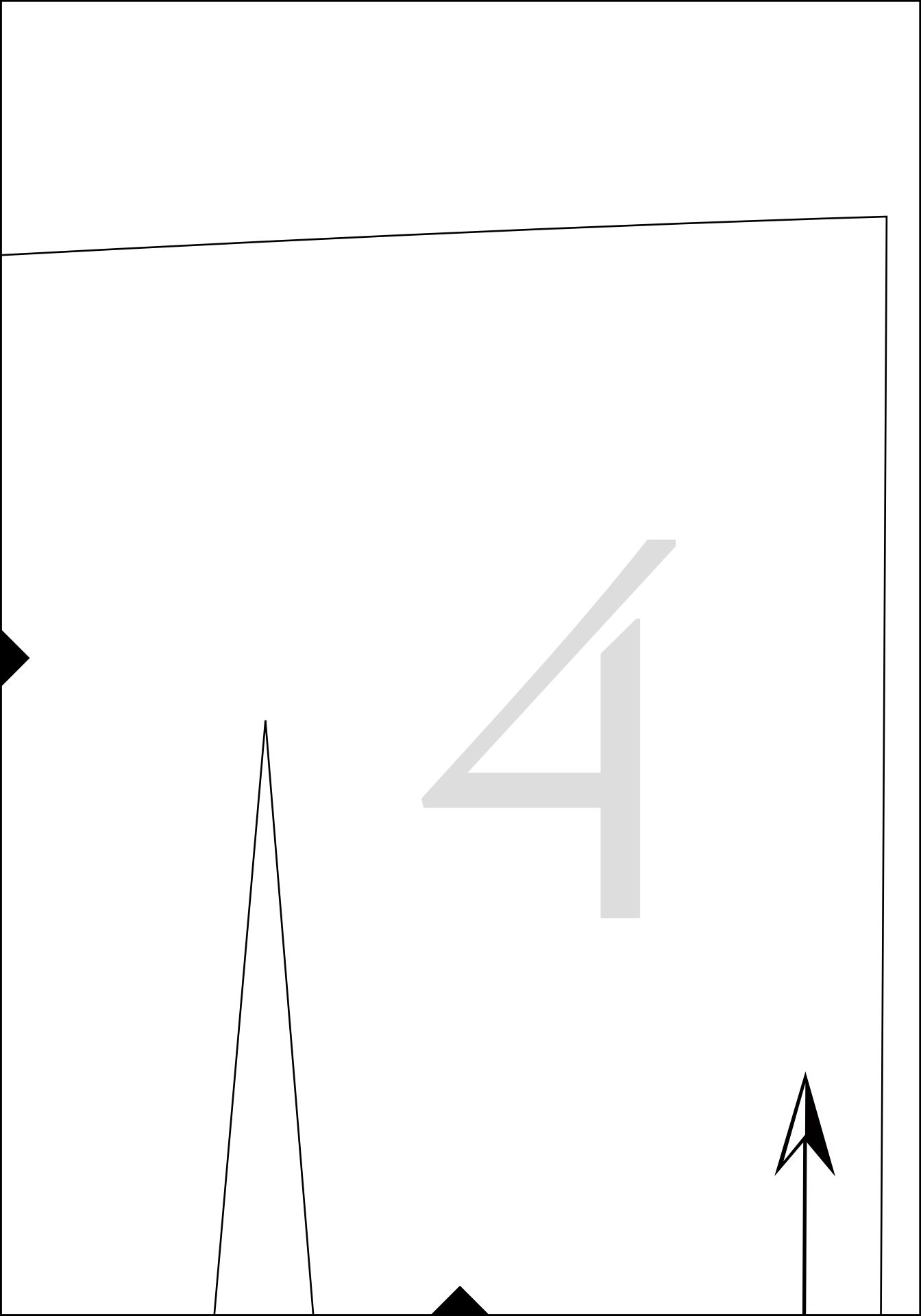
Size 48  
(D Cup)

Cut 2

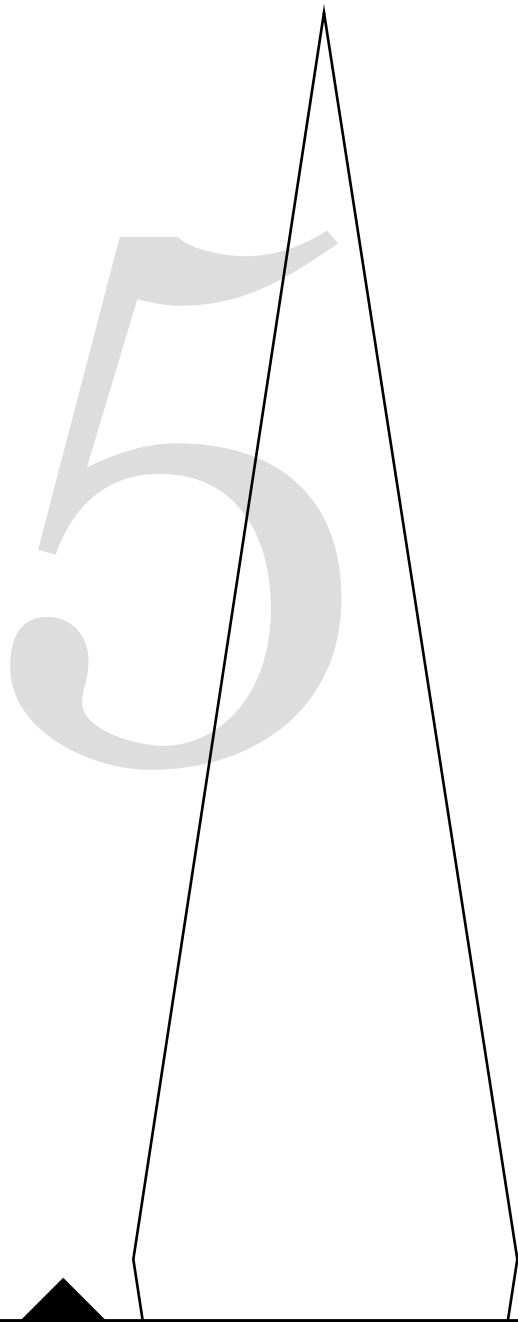


2

3



(has no seam allowances)

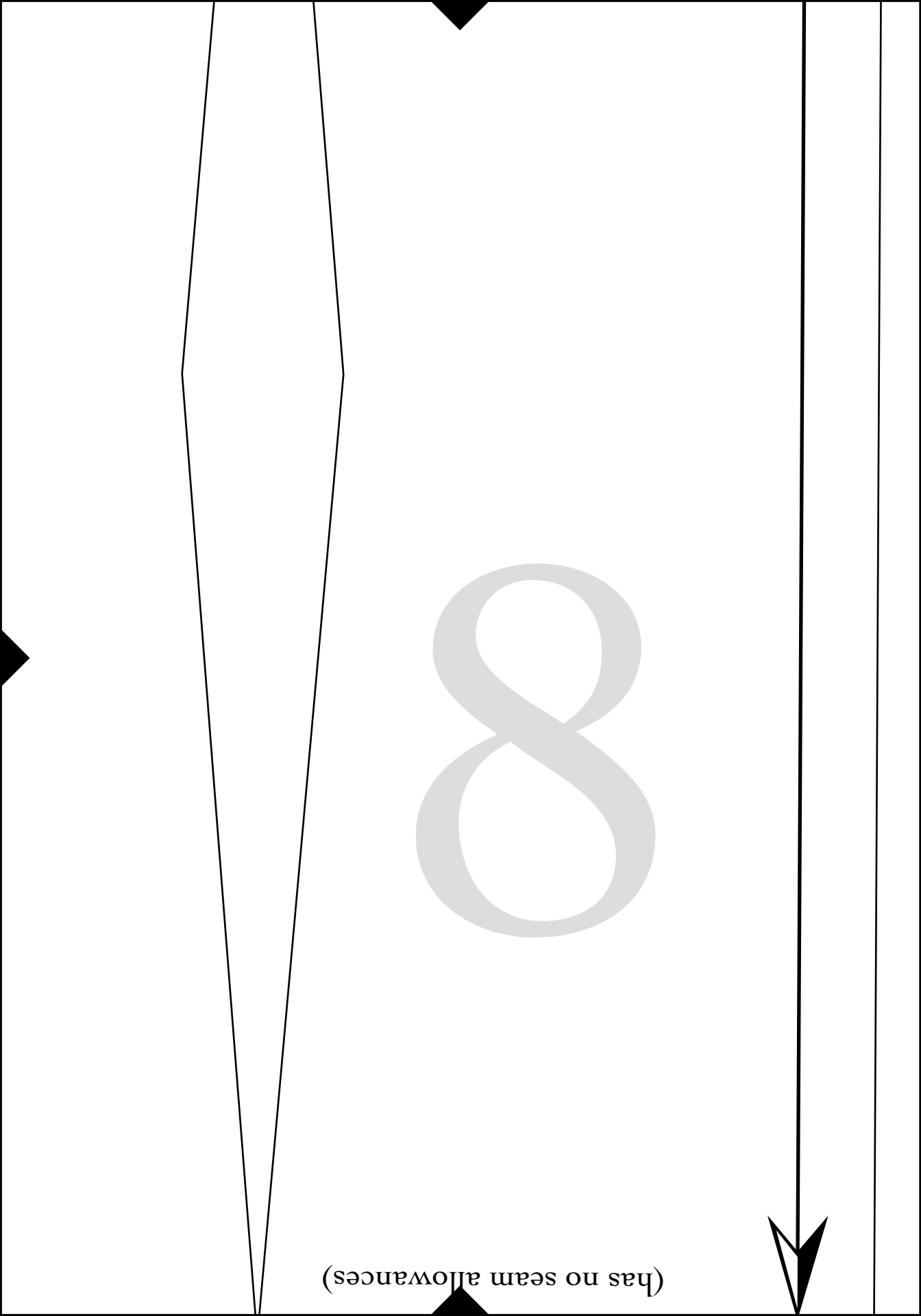


6

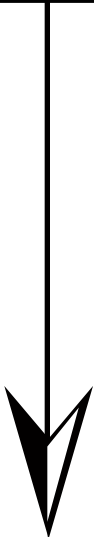
7

8

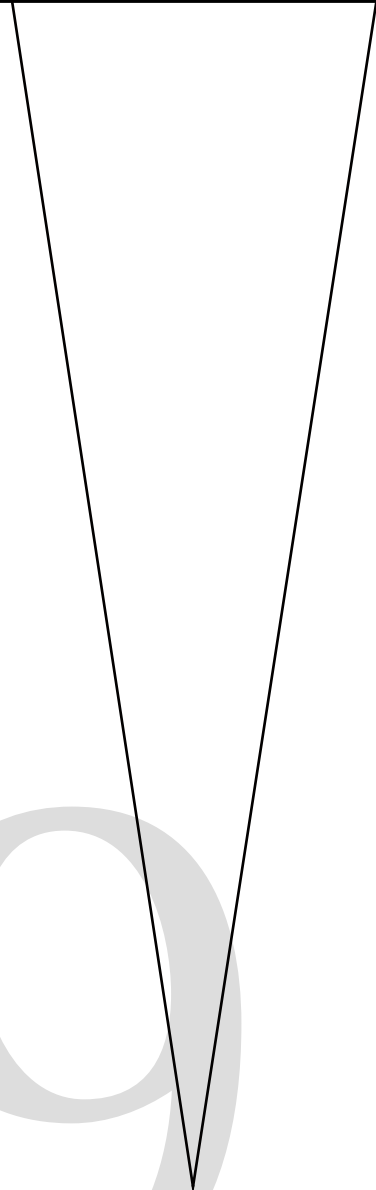
(has no seam allowances)







9



10

11

Cut 2

Size 48

BACK

Bodice Sloper

*No. 0001*

*Blue Hours Atelier*

12

13



14

*Blue Hours Atelier*  
*No. 0001*

15

16



17

Bodice Sloper

SLEEVE

Size 48

Cut 2

(has no seam allowances)

18

19



20

# 21



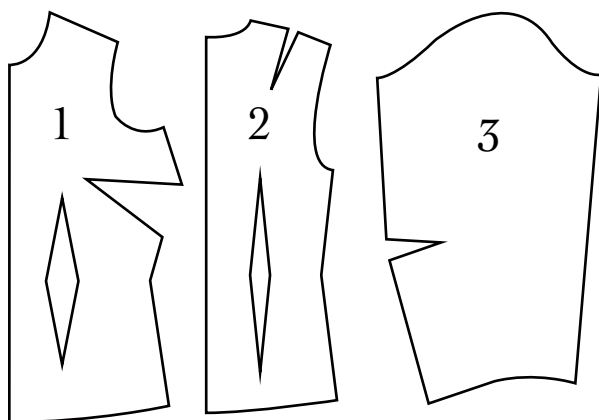
*BH No. 0001*

Women's Bodice Sloper for Nonstretch Fabrics

Includes three pieces, 1) bodice front, 2) bodice back, 3) sleeve.

For bodice front, choose variation with desired cup size.

Sloper pieces have no seam allowances.



*Test Square*

3 inches x 3 inches

22

23



24